

Current Context – Comprehensive Plan

Utilities and the Rural Area

- One Water Objective 4.3:
 - Public potable water and wastewater cannot be extended into the Rural Area, unless they serve:
 - A documented public health hazard
 - Planned village
 - A project with established vested rights for service
 - Serve a public school
 - Properties meeting requirements in water resources areas
 - Connections to existing lines allowed when adjacent and meeting certain criteria
 - Extensions/connections have additional restrictions – e.g. shall not be used as justifications for urban-level densities/uses, must be paid for by party requesting service, etc.

HC/CPA 23-18 Mitigating Environmental Impacts of Septic

- One Water Policy 5.2.8 directs Planning Commission staff to work with appropriate regulatory agencies on septic siting and wastewater connection policy
- EPC-requested change
- Policy changes developed by Planning Commission with technical review and support from EPC, Water Resources, and Development Services



HC/CPA 23-18 Mitigating Environmental Impacts of Septic – Major Changes

- Add new policies to allow for Rural Area utility extension for:
 - Documented environmental issues caused by septic or private/franchise infrastructure
 - Prevention of clustering of new septic tanks
- Update policy to allow properties adjacent to existing Rural Area lines to be serviced by water and wastewater when subdividing
 - Size restrictions to only serve new development
- Add new policy to outline process for enabling Rural Area utility extensions serving unique circumstances and overriding public interest
- Other miscellaneous cleanup provisions for clarity

HC CPA 23-18: Next Steps

- Early November – Distributed for formal agency comment
- December Planning Commission and BOCC briefings
- January Planning Commission and BOCC public hearings
- March BOCC adoption
- Effective April/May timeframe
- Full language: <https://planhillsborough.org/hillsborough-county-plan-amendments-interactive-map/> (click on 2023, go to text amendment box)





Hillsborough County
City-County
Planning Commission

Unincorporated Hillsborough County Comprehensive Plan Future Land Use Section Update

Community Meeting #6
November 2nd, 2023

PlanHillsborough.org/hclanduse



The Team



Melissa Lienhard, AICP
Project Manager/Executive Planner



Andrea Papandrew, AICP
Senior Planner



Amy Elmore, AICP
Consultant Project Manager



Angela Gazabon-Serje
*Senior Community
Outreach Specialist*



Alex Burns
Community Planner



AGENDA

- **Welcome & Introductions**
- **Project Overview**
- **What we have heard so far**
- **Future Growth Projections**
- **Anticipated Changes**
- **Next steps & stay involved**
- **Q & A**

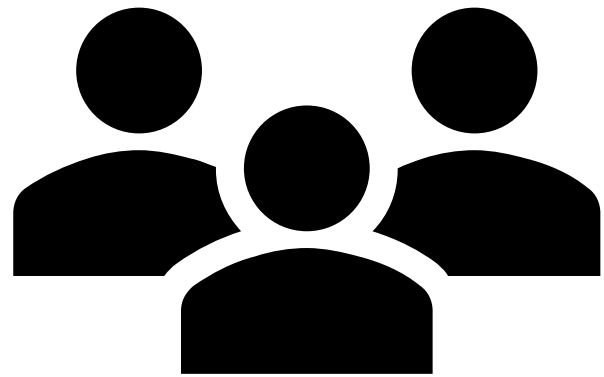


Why are we doing
this update?



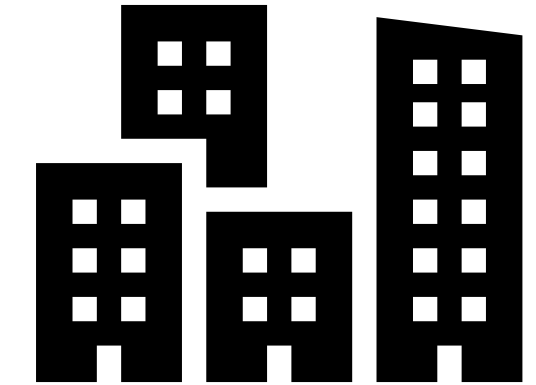
Address Future Growth

By 2045, Unincorporated Hillsborough County will see...



350,000
MORE PEOPLE

107,000
MORE JOBS



& Increasing demand for...



TRANSPORTATION



COUNTY SERVICES



SCHOOLS



RECREATION

The Comprehensive Plan can ...

- ✓ **Envision Future Growth**
- ✓ **Provide Consistency**
- ✓ **Prioritize Funding**
- ✓ **Protect Resources**

- Legally required
- Typically updated every 7-10 years



Current Updates

- Natural Open Space
- One Water
- Governance
- Community and Built Environment
 - Mobility
 - Housing



The Future Land Use Section is the last major piece of the puzzle.



Future Land Use vs. Zoning



Future Land Use



Guides purpose and character of growth



Separates land into general categories



Sets maximum density and range of uses



Maintain health, safety, and welfare by separating incompatible land uses



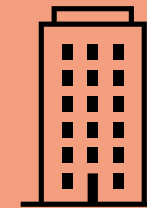
Zoning



Regulates building size, setbacks, specific uses, etc.



Used to approve/deny developments and uses



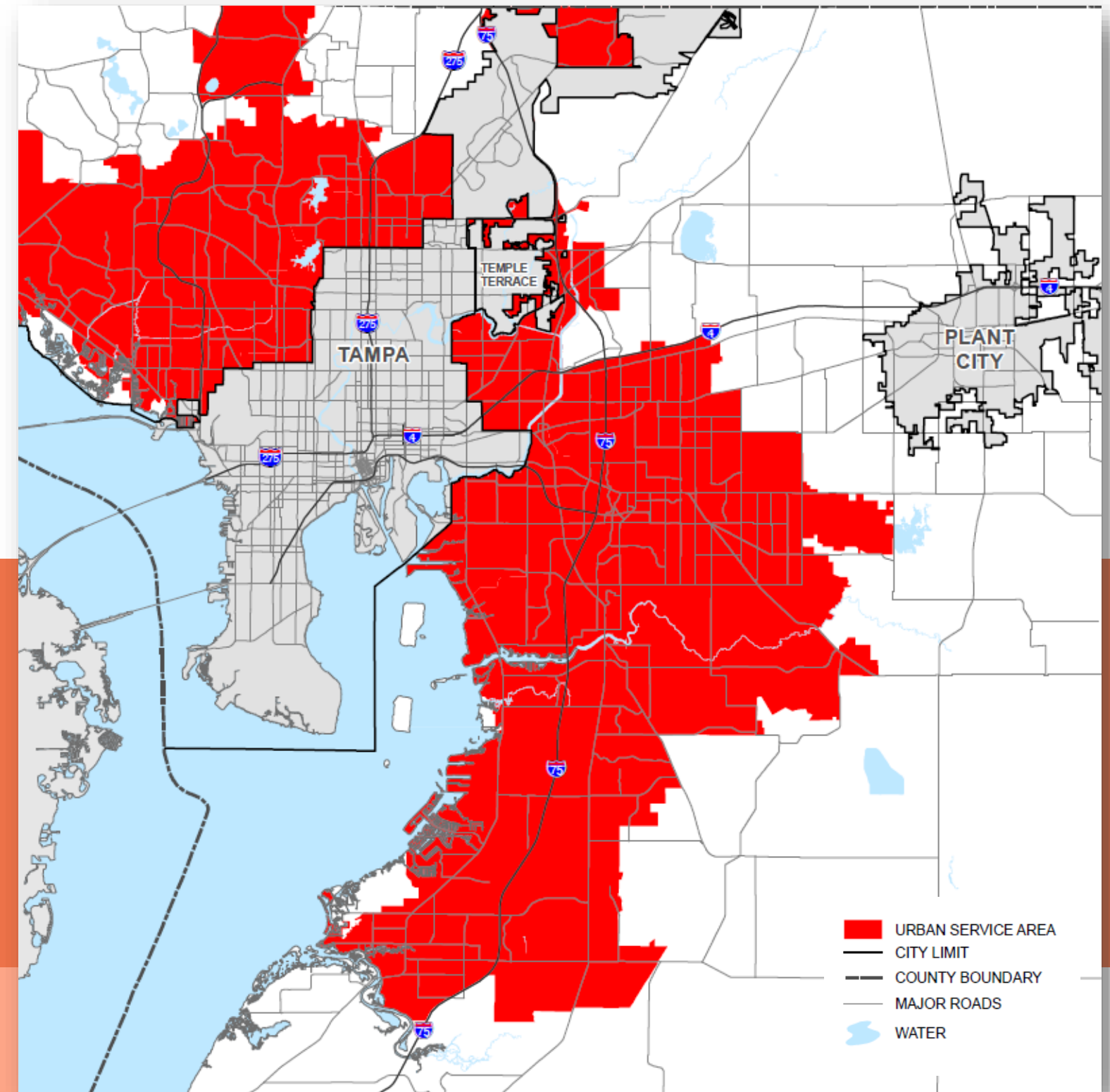
Defines specific districts within general categories

Urban Service Area

- Part of the adopted Future Land Use Element's Growth Management Strategy
- Pinpoints where current growth is focused
- Identifies urban/suburban development and rural areas
- Helps to create compatible development patterns that efficiently utilize land and county services

20%

Land that is vacant, developable or redevelopable within the Urban Service Area



Source: Planning Commission, Jan. 2023

*Note: 2,110 acres annexed by Plant City since 2015

Working Together



LONG RANGE TRANSPORTATION PLAN



TRANSIT DEVELOPMENT PLAN



LAND DEVELOPMENT CODE



COMPREHENSIVE PLAN



OTHER PLANS WE COLLABORATE WITH:

- River Board Plans
- Local City Plans
- Sustainability Plans
- Affordable Housing Plans
- Community Plans
- Regional Plans
- Trail Network Plans
- Hillsborough School Plans



Land for Future Development and Redevelopment



51,077

TOTAL ACRES

*Developable and redevelopable
land within Plant City, Tampa,
Temple Terrace, and the Urban
Service Area*



33,282 (65%)

*Total Acres In the Urban Service
Area*



17,796 (35%)

*Total Acres In Plant City, Tampa,
and Temple Terrace*

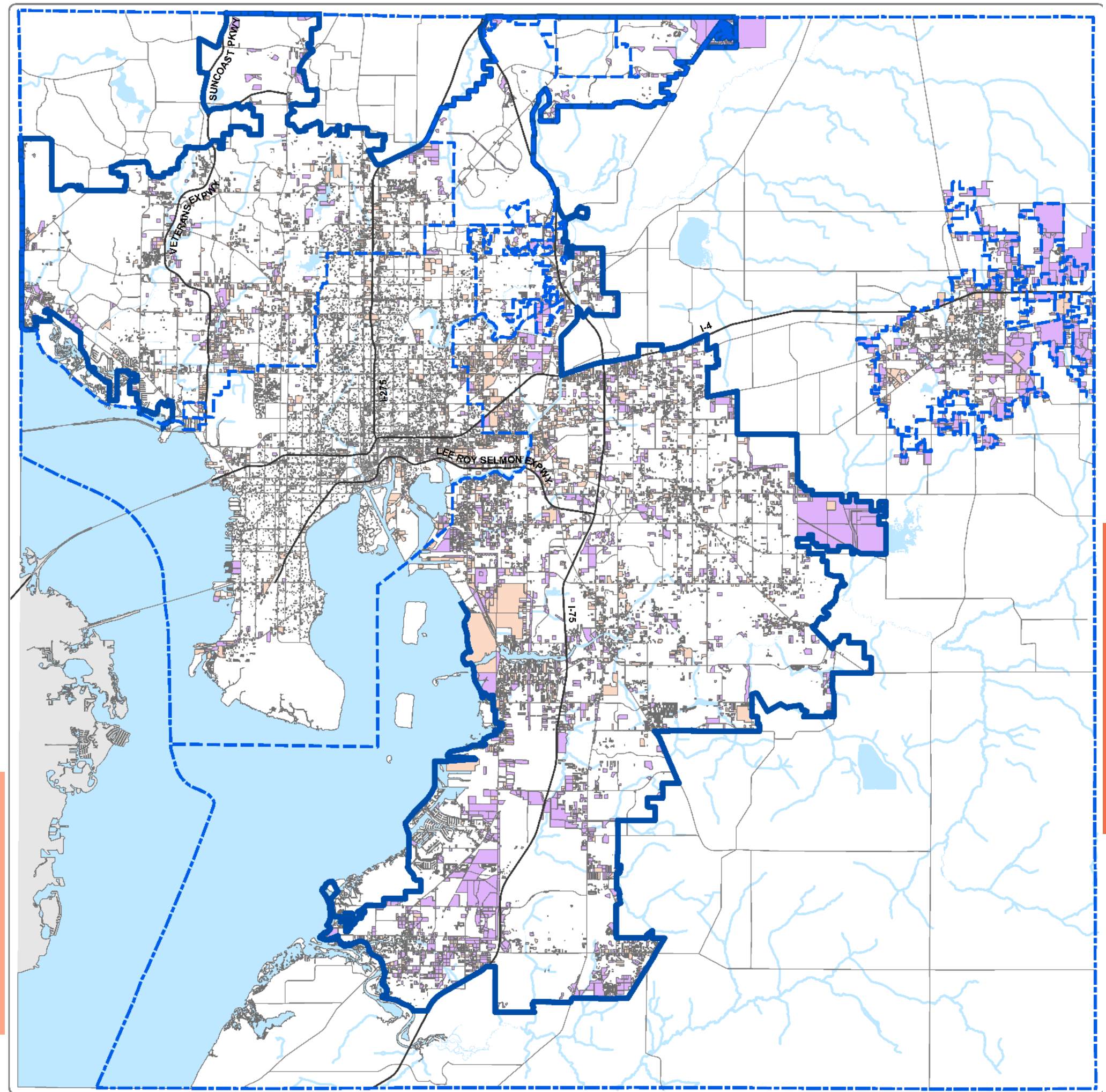


DEVELOPABLE



REDEVELOPABLE

*excludes wetlands






What have we
heard so far?

Who have we heard from?

- ✓ **1,800+** survey participants
- ✓ **32,000+** data points collected
(approx. 17 per participant)
- ✓ **1,600+** comments submitted overall
- ✓ **5,600+** mapping data points

*Complete survey and results can be found here https://planhillsborough.org/wp-content/uploads/2023/08/HC-FLU-Survey-Results-Tech-Memo_080323.pdf






What did they say?

Question: What is a priority for you?

Top four priorities overall:

1. Preserve natural areas (20% ranked as #1 priority)
2. Infrastructure and development (17% ranked as #1 priority)
3. Maintain agricultural and rural lands (10% ranked as #1 priority)
4. Variety of mobility choices (6% ranked as #1 priority)



Survey Results: Inward Growth

Question: How important is each strategy when considering inward growth (within the Urban Service Area boundary)?



Most Important: Efficiency of Existing Infrastructure

Relative to the other options, **maximizing existing infrastructure was the most important strategy** when focusing on inward growth



Least Important: Variety of Housing Types

Variety of housing types was ranked as the least important of the four options

Survey Results: Inward Growth

Question: How important is each strategy when considering inward growth (within the Urban Service Area boundary)?

1 = not effective or important, 5 = extremely effective or important



Efficiency of existing infrastructure

- An average of 4.36 out of 5
- 52% of respondents ranked it 5



Close to daily needs

- An average of 4.02 out of 5
- 38% of respondents ranked it 5



Safe walking and biking

- An average of 4.23 out of 5
- 49% of respondents ranked it 5



Variety of housing types

- An average of 3.36 out of 5
- 25% of respondents ranked it 5



Survey Results: Outward Growth

Question: How important is each strategy when considering outward growth (outside the Urban Service Area boundary)?



Most Important: Minimize Impacts to the Environment

Relative to the other options, **minimizing impacts to the environment was the most important strategy** when focusing on outward growth



Least Important: Access to Major Highways

Access to major highways was ranked as the least important of the four options

Survey Results: Outward Growth

Question: How important is each strategy when considering outward growth (outside the Urban Service Area boundary)?

1 = not effective or important, 5 = extremely effective or important



Minimize impacts to environment

- An average of 4.53 out of 5
- 55% of respondents ranked it 5



Have infrastructure in place

- An average of 4.26 out of 5
- 47% of respondents ranked it 5



Access to Major Highways

- An average of 3.66 out of 5
- 32% of respondents ranked it 5



Preservation of rural areas

- An average of 4.36 out of 5
- 50% of respondents ranked it 5



Compatible Land Uses

- An average of 4.04 out of 5
- 34% of respondents ranked it 5



Outreach So Far...

3 Virtual Public Meetings

2 In-Person Public Meetings

3 Project Advisory Team Meetings

Online Survey with 1800+ Responses

November Outreach

What we've heard

Minimize
environmental
impacts

Maintain
character of
neighborhoods

Use vacant
land before
expanding

Residential
closer to daily
needs

Increase safety of
biking/walking

Reduce traffic

More
affordable
housing

A wide-angle photograph of a suburban street. On the left, a white house with a dark roof and a two-car garage is visible. The street is lined with large, mature trees and green lawns. Several mailboxes are placed along the sidewalks. In the distance, more houses and parked cars are visible under a blue sky with scattered clouds. A semi-transparent white box containing text is overlaid on the bottom left, and four vertical colored bars are on the bottom center.

Policy Directions: Future Land Use Section Updates



• • • **New State Legislation | SB 250**

- Intended to accelerate rebuilding following Hurricanes Ian, Nicole and other natural disasters
- Applies to local governments within the disaster declaration area (100-mile buffer)
- Local governments are not allowed to increase building fees or adopt “more restrictive or burdensome procedures” to its Comprehensive Plans or Land Development Regulations
 - Example: County prohibited from removing density/intensity bonuses
 - Example: Commercial Locational Criteria Study changes placed on hold
- Bill is in effect through October 1st, 2024



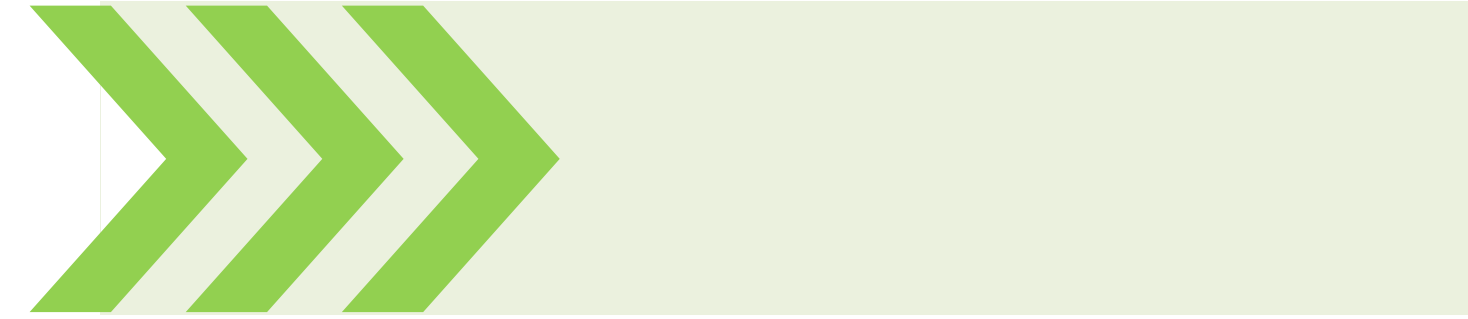
**Bill 250 became effective on July 1st, 2023;
applies retroactively to September 28, 2022**

Goal 1 - Growth Management

- New publicly initiated strategic expansion area language
- Minor revisions to rural area policies
 - Removed duplicative language
 - Simplified existing language



Outward Growth Strategies



Strategic Expansion Instead of Reactive

- The USA has not expanded through a publicly initiated plan amendment
- Criteria in the current Comprehensive Plan for applicant driven-expansion (FLUE Policy 2.2.); generally reactive in nature
- **Identified need for proactive, strategic future expansion criteria**, not identifying the specific areas at this juncture, but criteria to consider for future identification

Reviewed case study

examples:

- Plant City NE Master Plan
- Sarasota County
- Osceola County
- Indian River County
- Marion County
- Morgan Hill, CA

Policy Approach to Strategic Expansion

(Publicly Initiated)



WHEN?



When is it time
to consider
expansion?



HOW?



How should we
plan for that
expansion?



WHAT?



What should we
look at in
expansion areas?

Policy Approach to Strategic Expansion

(Publicly Initiated)



WHEN?

- Evaluate need to accommodate additional population or job growth over plan horizon based on:
 - Planning Commission population estimates
 - Bureau of Economic and Business Research forecasts
 - Evaluation and Appraisal Report
- Evaluate with required Comprehensive Plan Updates

Policy Approach to Strategic Expansion

(Publicly Initiated)



HOW?

- Establish Urban Expansion Area(s)
- Allow master planning of existing Rural Areas
- Does not move the Urban Service Area boundary immediately
- Provides for transition to suburban or urban development pattern over planning horizon
- Allows different policies or tools to be applied in the Expansion Area(s) to guide new growth and infrastructure planning
- Amendments to CIS may be needed to reflect needed infrastructure to ensure adequate public facilities

Policy Approach to Strategic Expansion

(Publicly Initiated)



WHAT?

An Urban Expansion Area Master Plan will:

- Provide a sustainable, mixed use development pattern
- Identify needed public facilities and plan for them to be provided timely with new development
- Align impact fees, mobility fees and other tools to support growth
- Explore public/private partnerships for infrastructure
- Coordinate with external agencies – i.e. HART, EPC, School District
- Consider the fiscal impact to the County
- Provide access to employment, daily commercial needs, cultural and recreational amenities and community centers
- Pursue community input and engagement

Goal 2 - Growth Management

- Added Future Land Use Categories Table
- Simplified density and FAR calculation and bonuses policy language
- New Centers & Connections language
- Provide for updated TDR Pilot Program and designated receiving areas to make more implementable and guide companion LDC amendments
- Upcoming new language on congregate living facilities

Centers and Connections

Expanding choices for living and getting around



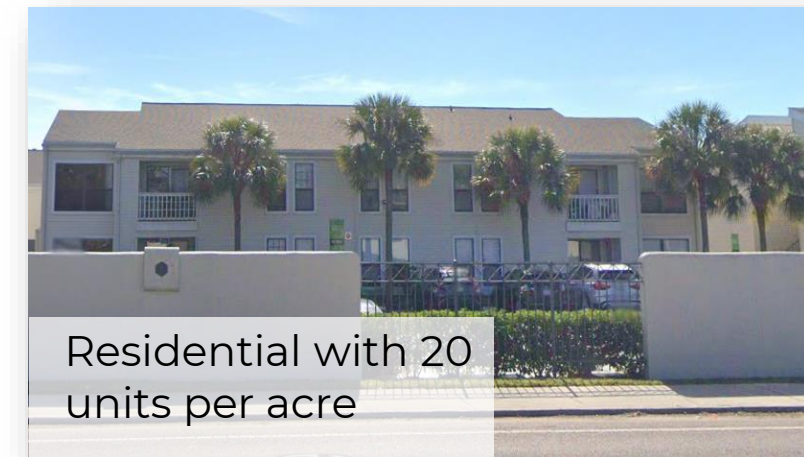
- Focuses on centers and corridors that are coordinated with Community Plans and major intersections
- Expands housing opportunities and choices
- Encourages more pedestrian friendly development
- Allows for a bonus in density or intensity to the next land use category

BEFORE...

TOWN 'N' COUNTRY



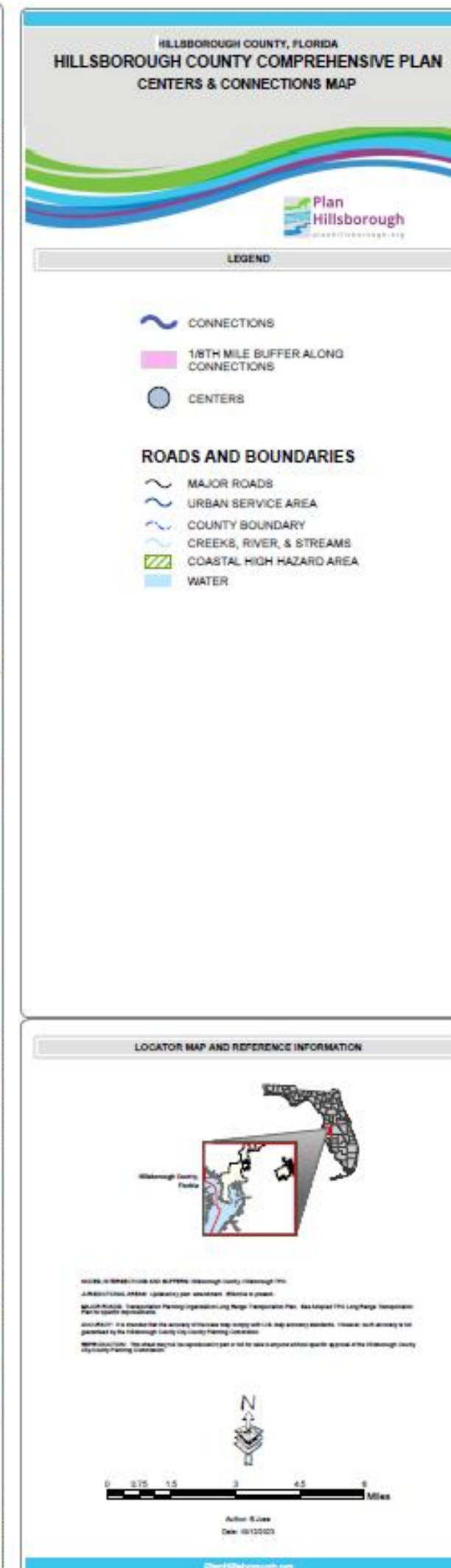
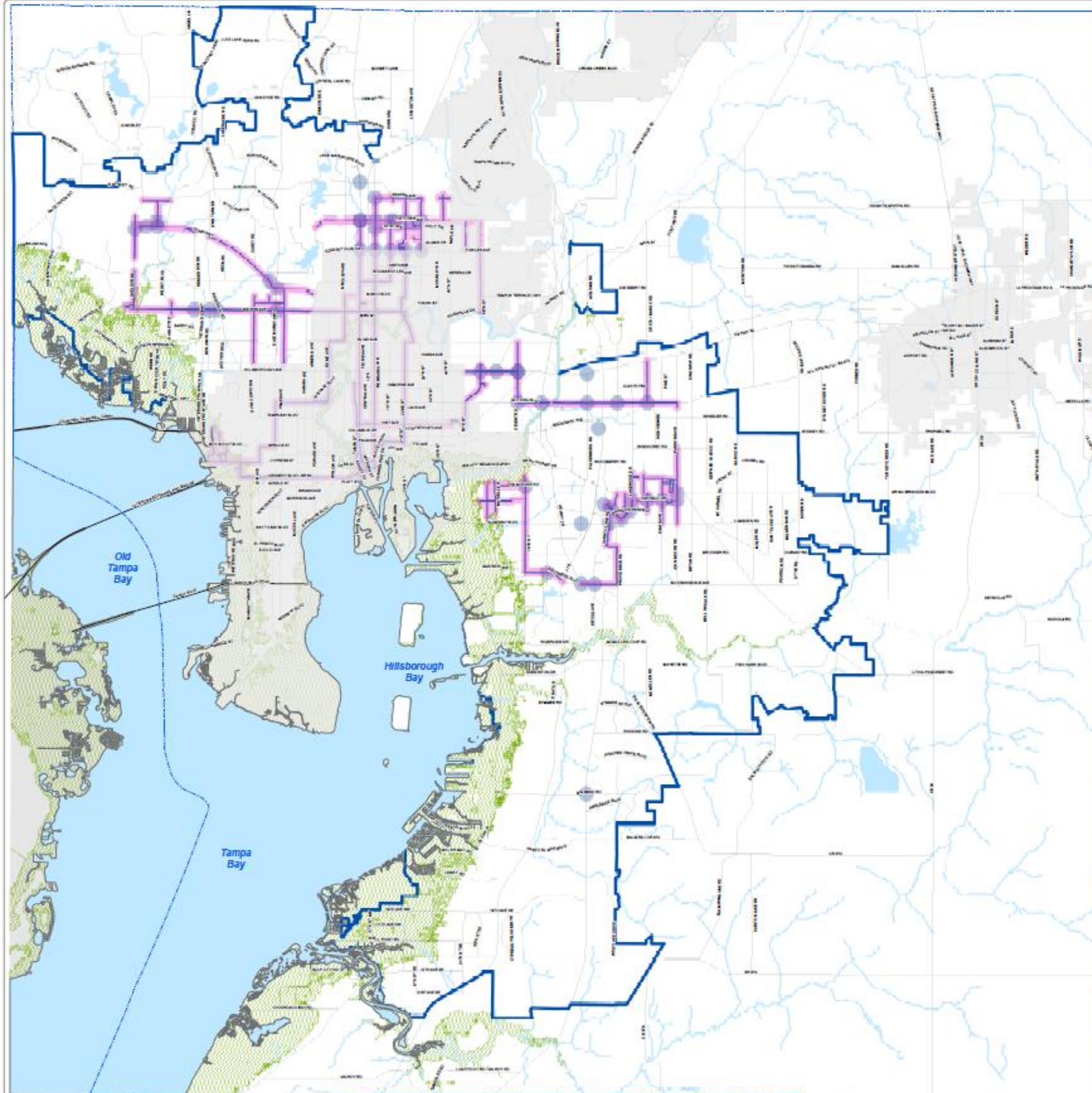
USF AREA






PALM RIVER



Centers & Connections Final Draft Map October 2023



-  Connections
-  1/8th mile buffer along Connections
-  Centers in the Community Plans and major intersections – increased development via bonuses

Goal 3 - Community Context

- Combined the compatibility and community planning sections
- Moved 3 Economically Disadvantaged Group Element policies
- Minor revisions to cultural and historic preservation reflect current programs

Goal 4 - Development

- Clarifications to mixed-use and land use suitability language
- Updated Transit Oriented Development section
- Updated Commercial Locational Criteria section
- Updated Airports and Ports section

Transit- Oriented Development

How will TOD be used in the Future Land Use Update?

- Policy will apply within a 0.5 mile radius of proposed stations for fixed guideway transit
- May allow increased density/intensity in exchange for designs that:
 - Promote access to multiple mobility options
 - Include affordable housing
 - Include mixed uses to keep necessary services in close proximity to residences
- Will be adopted into City of Tampa and Unincorporated Hillsborough County Comprehensive Plans

CLC Revisions

- Limited changes due to public input, BOCC direction and changes in statute

Context Classification Map

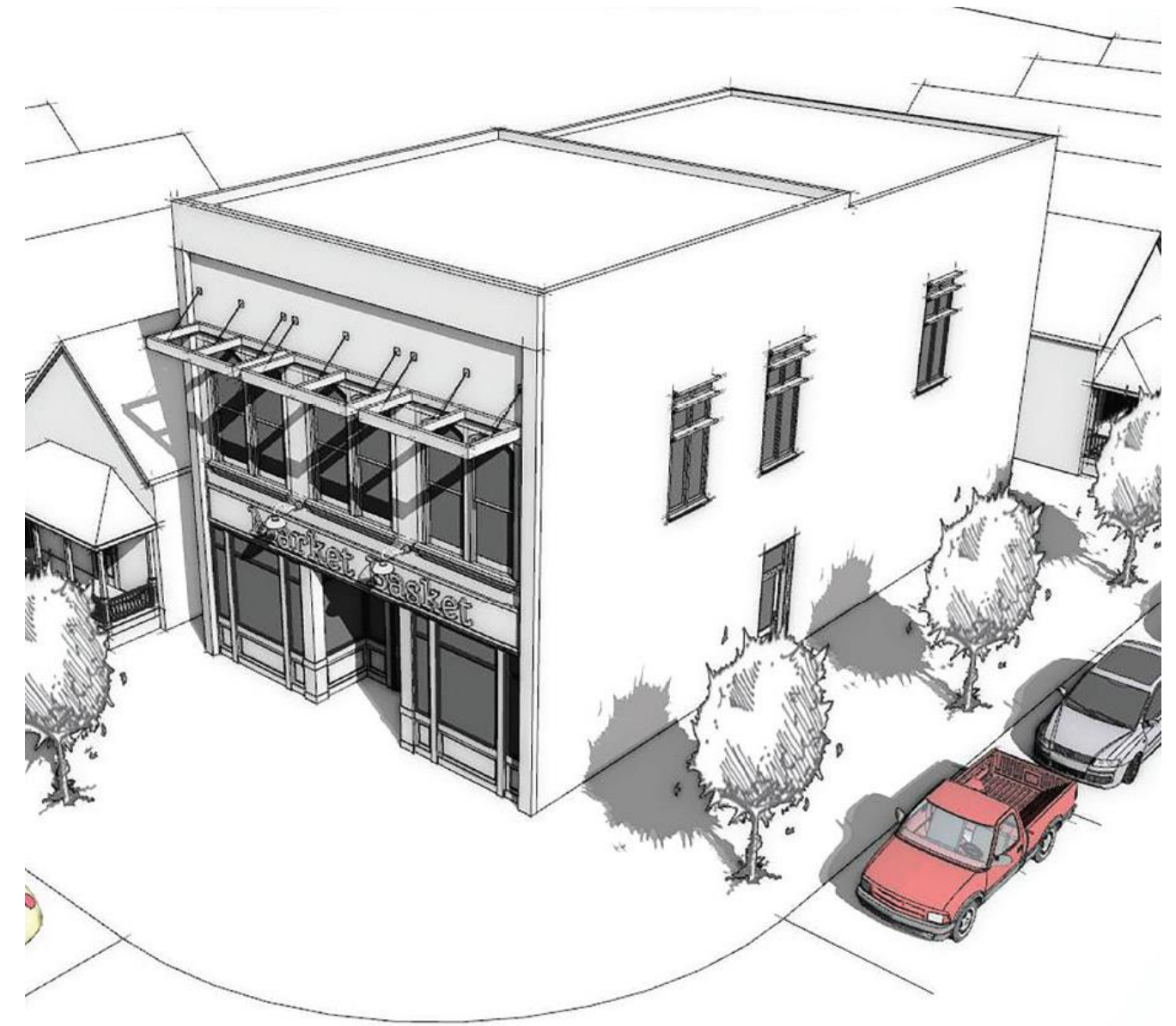
- Addition of the Context Classification Map in conjunction with the 2040 Cost Affordable Map

Neighborhood Mixed-Use 6

- Permits commercial activities without permitting high density development

Community Plan Language

- Additional language that applications for commercial uses must consider Community Plan language



Goal 5 - Agriculture

- Minor revisions to reflect current programs
- No changes to Planned Village policies
- No changes to Adoption/Child Caring Community and Planned Environmental Community 1/2

Goal 6 - Built Environment

- Majority of design related policies moved to Goal 6
 - Urban, suburban and rural form
 - Mixed-use and commercial character
 - Transportation and landscape design
- Clarified and simplified language
- Removed duplicative policies

Goal 7 - Balance with Natural Resources

- Revisions to reflect current programs
- Removed duplicative policies
- Retaining Working Waterfront language
- Additional language on transmitting plan amendments to Port Tampa Bay

Goal 8 - Economic Development

- Minor revisions to reflect current programs
- New policies to protect and encourage office and industrial land uses
- Removal of Interstate-75 policies



What's next?



PUBLIC MEETING



Hillsborough County
City-County
Planning Commission

Let's talk about our future!
How should we grow?
Let us know!



Upcoming Community Meetings

THURSDAY, NOV 2

FROM 6:00 PM

IN-PERSON @ Gardenville

Recreation Center

MONDAY, Nov 6

FROM 6:00 PM

VIRTUAL

**This meeting will discuss the same topics
as Nov. 2nd.*

Register:



Project Website: planhillsborough.org/hclanduse/

Upcoming Meetings

VIRTUAL

MONDAY, NOV 6

FROM 6:00 PM

Register Here:

bit.ly/howdowegrow5

This meeting will discuss the same topics provided today.

PAT Meeting

TUESDAY, NOV 15

IN-PERSON

FROM 5:00 PM

PAT Meeting

WEDNESDAY, NOV 16

VIRTUAL

FROM 5:00 PM

PUBLIC HEARINGS:

Planning Commission Briefing

NOVEMBER 13

FROM 2:00 PM

IN-PERSON

Planning Commission Hearing

JANUARY 26

FROM 5:30 PM

IN-PERSON

OPEN HOUSE

- 10 minutes of questions as a group
- County Live/Work Map
- Table for each FLU Goal
 - Policy language at each table
- Multiple ways for feedback:
 - Comment Forms
 - Virtually via project page
 - Email staff – staff cards at sign in table
- County Department Staff

Get in Touch



Hillsborough County
City-County
Planning Commission

Contact us for more information.



Melissa Lienhard, AICP
813.547.4364
lienhardm@plancom.org



Andrea Papandrew, AICP
813.665.1331
papandrewa@plancom.org

**Visit our website and
follow us on social media.**



planhillsborough.org/hclanduse



Questions

