



Hillsborough MPO
Metropolitan Planning
for Transportation

TPO Apportionment Plan 2023 Update

TPO Committee & Board Meetings – October 2023



Background

- **What is an Apportionment Plan?**

Identifies the voting membership of an MPO

- **Why is this required?**

Federal law requires that an MPO must be designated for each urbanized area over 50,000 populations. State law requires that MPO must review the composition of its membership in conjunction with the decennial census.



Requirements

- ✓ 5 – 25 members *F.S. 339.175(3)(a)*
- ✓ Voting membership determined on an equitable geographic-population ratio basis *F.S. 339.175(3)(a)*
- ✓ County Commissioners must compose no less than 20% of membership if transportation operators appointed to Board *F.S. 339.175(3)(a)*



History

Due to FDOT
November 15th

August 2022

- TPO Board proposed to increase BOCC membership to 7 seats

December 2022

- TPO Board Considered Tampa Proposal and tabled Apportionment Plan

October 2022

- Tampa Alternative Apportionment Resolution to also increase Tampa membership to 4

June 2023

- FDOT issued Apportionment Guidance



What's Changed?

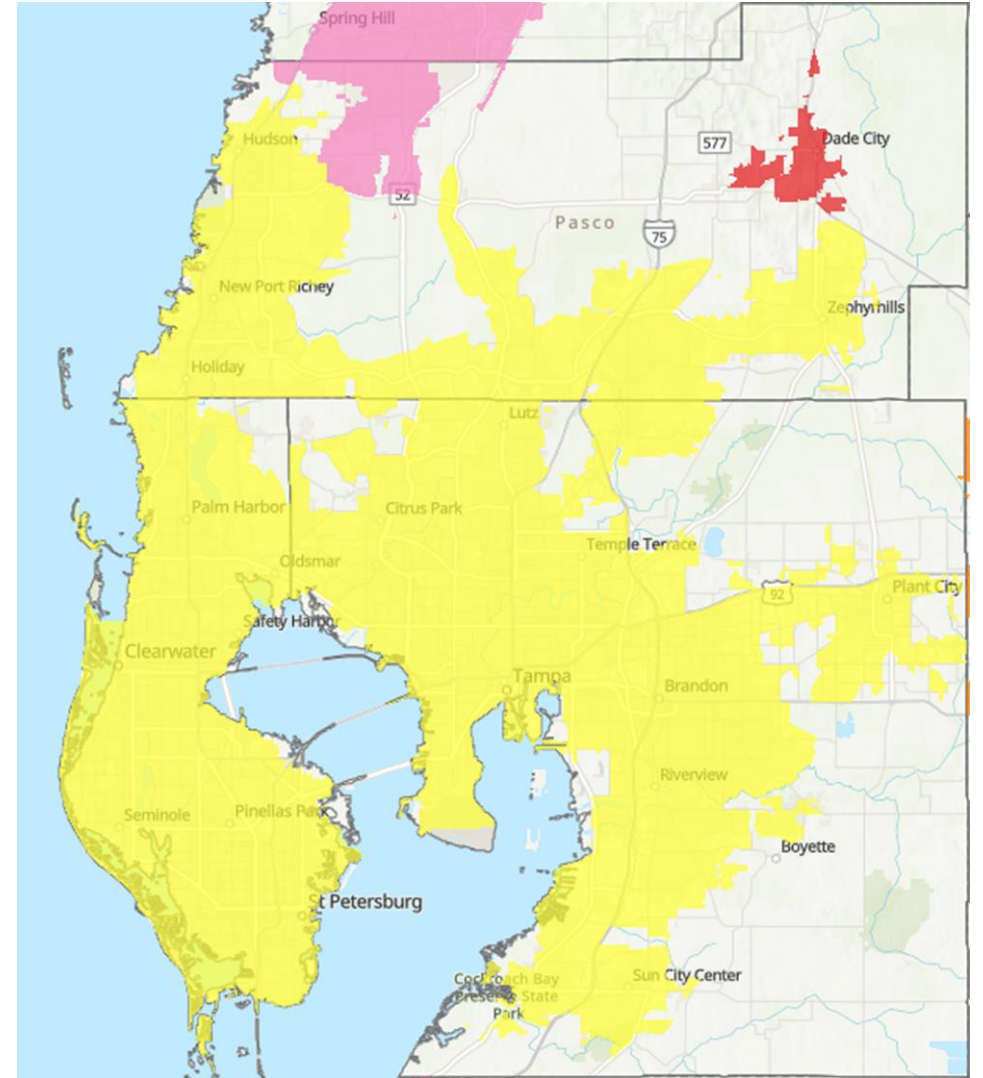


Figure 3. Requirements for Apportionment Plans



What's Changed?

- MPOs in Tampa-St. Petersburg urban area exploring merger



Current Apportionment

Jurisdiction/Agency/Entity	Current Membership		
	Number of Voting Members	Number of Non-Voting Members	Percent of Total Votes
Unincorporated Hillsborough County	5		31%
City of Tampa	3		19%
City of Plant City	1		6%
City of Temple Terrace	1		6%
Hillsborough County School Board	1		6%
Hillsborough Area Regional Transit Authority	1		6%
Planning Commission	1		6%
Tampa Hillsborough Expressway Authority	1		6%
Hillsborough County Aviation Authority	1		6%
Tampa Port Authority	1		6%
Florida Department of Transportation		1	0%
Total	16	1	100

Recommendation

Approve maintaining the current voting membership in 2023 MPO Apportionment Plan and recommend approval to TPO Board

