



Hillsborough TPO Transportation Planning Organization

Commissioner Gwen Myers
Hillsborough County
TPO Chair

Mayor Andrew Ross
City of Temple Terrace
TPO Vice Chair

Paul Anderson
Port Tampa Bay

Councilman Alan Clendenin
City of Tampa

Commissioner Harry Cohen
Hillsborough County

Councilmember Lynn Hurtak
City of Tampa

Commissioner Pat Kemp
Hillsborough County

Mayor Nate Kilton
City of Plant City

Scott Drainville
HART

Joe Lopano
Hillsborough County
Aviation Authority

Councilman Guido Maniscalco
City of Tampa

Commissioner
Michael Owen
Hillsborough County

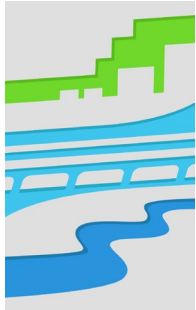
Hemant Saria
Planning Commission

Greg Slater
Expressway Authority

Commissioner
Joshua Wostal
Hillsborough County

Jessica Vaughn
Hillsborough County
School Board

Beth Alden, AICP
Executive Director



Plan Hillsborough

planhillsborough.org

planner@plancom.org

813 - 272 - 5940

601 E Kennedy Blvd

18th Floor

Tampa, FL, 33602

Workshop of the Bicycle Pedestrian Advisory Committee

Wednesday, July 26, 2023, 5:30pm. – 7:30pm

County Center, 18th Floor – Plan Hillsborough Committee Room

All voting members are asked to attend in person, in compliance with Florida's Government in the Sunshine Law. Please RSVP for this meeting. Presenters, audience members, and committee members in exceptional circumstances may participate remotely.

Remote participation:

- To view presentations and participate on your computer, tablet or smartphone:
- <https://attendee.gotowebinar.com/register/6547691131725299552>
- Register in advance to receive your personalized link, which can be saved to your calendar.
- Dial in LISTEN-ONLY MODE: 1-213-929-4212 Access Code: 845-113-083
- Presentations, full agenda packet, and supplemental materials [posted here](#), or phone us at 813-756-0371 for a printed copy.
- Please mute yourself after joining the conference to minimize background noise.
- Technical support during the meeting: Chris English at (813) 836-7380
- Rules of engagement:

Professional courtesy and respect for others at this meeting are expected. Failure to do so may result in dismissal from the meeting. For more information on expectations for participation, please see the TPO's [Social Networking & Media Policy](#).

Agenda

- I. Call to Order & Introductions**
- II. Roll Call and Welcome of Other TPO Board Members** (Gail Reese, TPO Staff)
- III. Public Comment** – *3 minutes per speaker, for a maximum of 30 minutes.*

Public comments are welcome and may be given during this hybrid meeting by logging into the website above and clicking the "raise hand" button. Comments may also be provided before the start of the meeting by e-mail to gordonb@plancom.org. Written comments will be read into the record, if brief, and provided in full to the committee members.

IV. Status Report

A. [BPAC Top Ten Project Workshop \(Ben Gordon, TPO Staff\)](#)

V. Old Business and New Business

VI. Adjournment

VII. Addendum

The full agenda packet is available on the TPO's website, www.planhillsborough.org, or by calling (813) 272-5940.

The TPO does not discriminate in any of its programs or services. Public participation is solicited without regard to race, color, national origin, age, sex, religion, disability or family status. [Learn more about our commitment to non-discrimination.](#)

Persons needing interpreter services or accommodations for a disability in order to participate in this meeting, free of charge, are encouraged to contact Connor MacDonald, (813) 946-5334 or macdonaldc@plancom.org, three business days in advance of the meeting. If you are only able to speak Spanish, please call the Spanish helpline at (813) 272-5940 or (813) 273-3774 and dial 1.

Se recomienda a las personas que necesiten servicios de interpretación o adaptaciones por una discapacidad para participar en esta reunión, o ayuda para leer o interpretar los temas de esta agenda, sin costo alguno, que se pongan en contacto con Connor MacDonald, (813) 946-5334 o macdonaldc@plancom.org, tres días hábiles antes de la reunión. Si sólo habla español, por favor llame a la línea de ayuda en español al (813) 272-5940 o (813) 273-3774 ext. 1.

In accordance with Title 17 U.S.C. Section 107, materials attached are for research and educational purposes, and are distributed without profit to TPO Board members, TPO staff, or related committees or subcommittees the TPO supports. The TPO has no affiliation whatsoever with the originator of attached articles nor is the TPO endorsed or sponsored by the originator. Persons wishing to use copyrighted material for purposes of their own that go beyond 'fair use' must first obtain permission from the copyright owner. The TPO cannot ensure 508 accessibility for items produced by other agencies or organizations.

If a person decides to appeal any decision made by the board, he or she will need a record of the proceedings, and for such purpose may need to ensure that a verbatim record of the proceedings is made, which record includes the testimony and evidence upon which the appeal is to be based.



Hillsborough TPO Transportation Planning Organization

Board & Committee Agenda Item

Agenda Item:

BPAC Top Ten Project Workshop

Presenter:

Ben Gordon, TPO Staff, and Tim Horst, BPAC Chair

Summary:

BPAC is working on a list of the “Top Ten Dangerous Locations for Bicyclists and Pedestrians.” Based on submissions from BPAC membership, this project may serve as a guide for future initiatives and interagency coordination efforts.

At BPAC’s July workshop, members will discuss their various submissions, examine the various road segments together in Google Earth, and attempt to narrow down the submissions to a ranked list of ten. This draft will be discussed and potentially adopted at BPAC’s August meeting.

Recommended Action:

Identify a list of Top Ten Dangerous Locations.

Prepared By:

Ben Gordon, TPO Staff

Attachments:

BPAC Top Ten Submissions List and Map



BPAC Top Ten Submissions List *(Duplicate submissions are highlighted)*

Dan Rodriguez

- US 301 and Gibsonton Drive
- Florida Ave and Waters Ave
- Lakewood Dr and MLK Blvd

Jonathan Forbes

- Gray St and MacDill Ave
- Gray St and Lois Ave

Tim Horst

- Hillsborough Ave at 13th St
- MLK Blvd at 12th St
- Busch Blvd at 18th St

Savana Vidal

- Fletcher Ave (from Nebraska Ave to Bruce B Downs Blvd)
- Fletcher Ave (from 42nd St to 46th St)
- Bruce B Downs Blvd (from Bearss Ave to Fowler Ave)

Victoria Klug

- Bayshore Blvd and Bay to Bay.
- Howard Ave (from Bayshore Blvd to Interstate)

Peter Davitt

- E Fowler Ave from US 301 to Main St / Harney Rd
- W Lutz Lake Fern Road between 41 and Dale Mabry Highway
- 40th St (south of Columbus)
- E Fowler Ave (from 30th St to Nebraska Ave)

David Cellitti

- Rome Ave (from Cass St to Platt St)
- Kennedy Blvd and Boulevard

Alain Watson

- US 301 and Gibsonton Drive
- Hillsborough Ave at 13th St.
- Florida Avenue and Waters Avenue

Jim Shirk

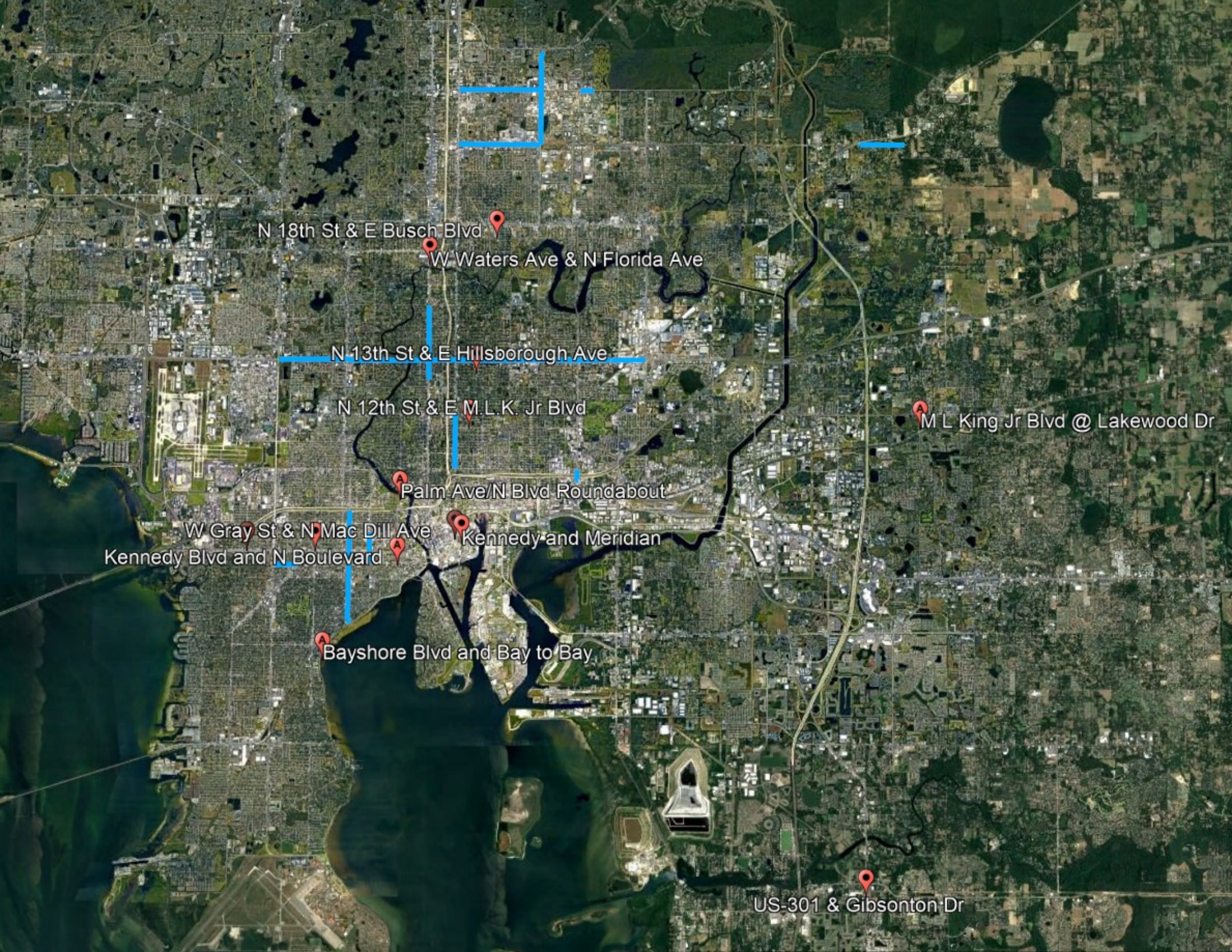
- Hillsborough Ave (from Dale Mabry to 56th St)
- Roundabout at Palm Ave and North Blvd
- Florida Ave north of Violet St

John Marsh

- Azeele St (from Henderson Blvd to Dale Mabry Hwy)

David Aylesworth

- Nebraska Ave and Twiggs St
- Kennedy Blvd and Meridian Ave
- "Segments of Nebraska with no bike lanes (north of Columbus Dr and south of MLK)



N 18th St & E Busch Blvd

W Waters Ave & N Florida Ave

N 13th St & E Hillsborough Ave

N 12th St & E M.L.K. Jr Blvd

M L King Jr Blvd @ Lakewood Dr

Palm Ave/N Blvd Roundabout

W Gray St & N Mac Dill Ave

Kennedy and Meridian

Kennedy Blvd and N Boulevard

Bayshore Blvd and Bay to Bay

US-301 & Gibsonton Dr