



VISIONZERO

HILLSBOROUGH

Vision Zero Streets: Waters and Sligh Avenues (Hillsborough County Roads in City of Tampa)

Task 1: Project Management

2 High Injury Network (HIN) roadways
Hillsborough County (HC) owned and maintained roadways,
located in City of Tampa limits
Joint Project Team/Stakeholders: HC PW and HC CIP/COT
Mobility

Stakeholder Screening Review:

1. Waters Avenue – Armenia Avenue to Florida Avenue (1.5 Miles)
2. Sligh Avenue – Armenia Avenue to Nebraska Avenue (2 miles)

Streets vs. Corridors – Context/Placemaking

Task 2: Existing Conditions

Crash Analysis (April)
Field Review (May)



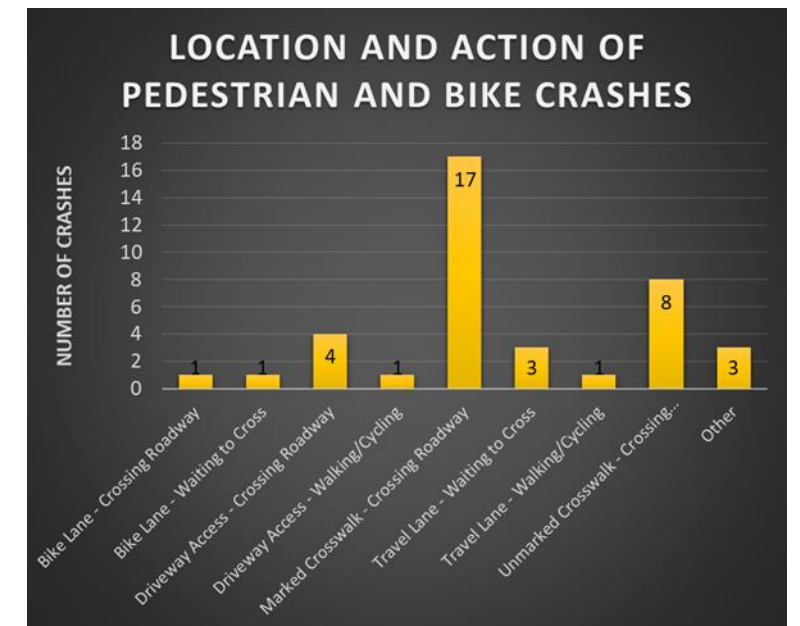
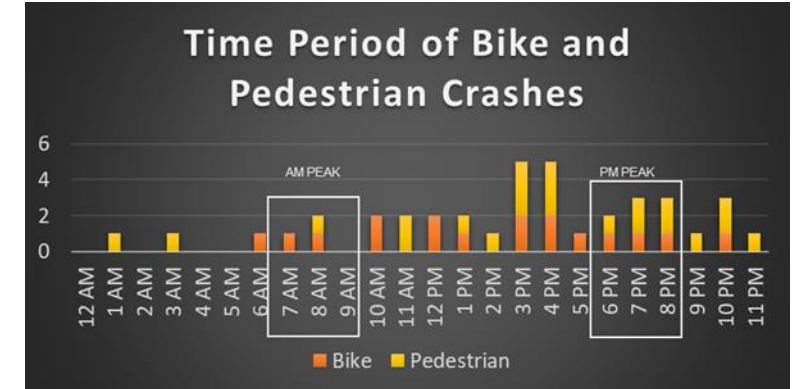
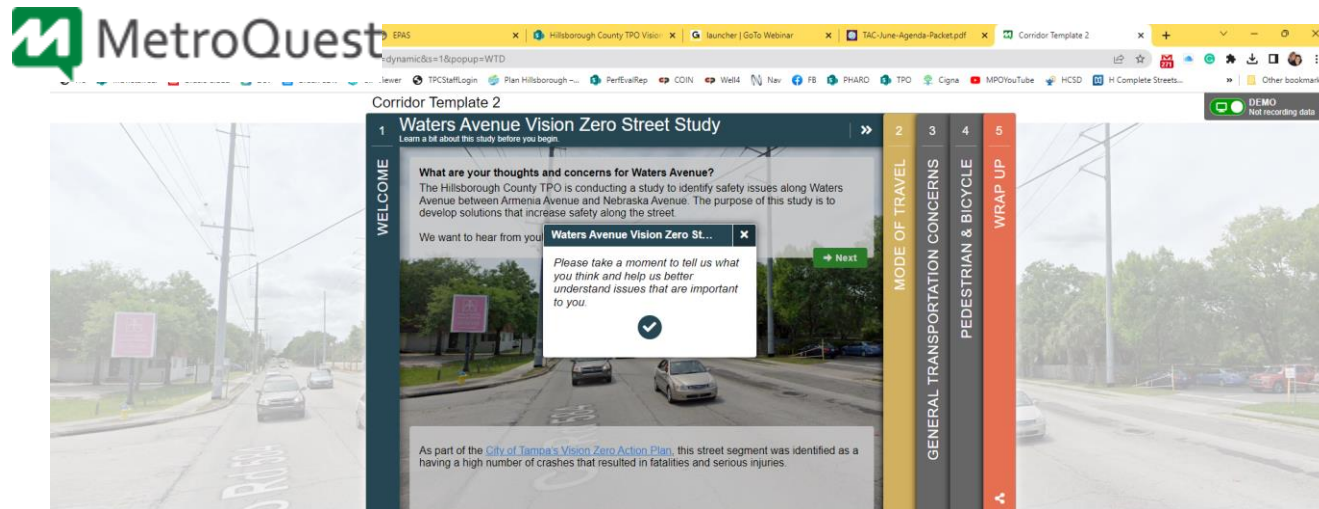
Task 3: Community Engagement

Community Workshops (July-August)

Online Web Map and Survey-MetroQuest (July-August)

Task 4: Development of Recommendations

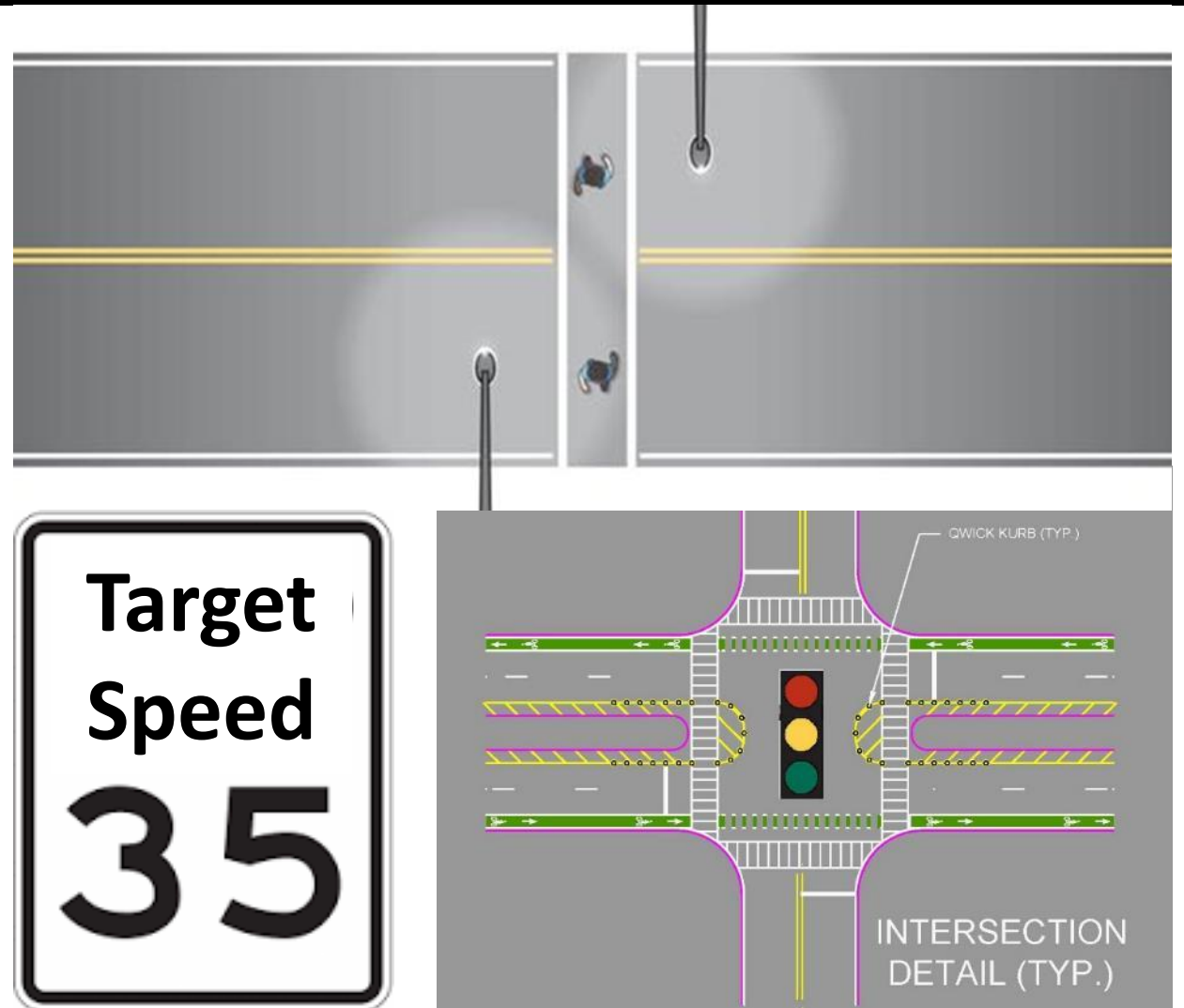
Task 5: Street Report and Cost Estimate (Nov-Dec end date)



Recommendations

Improvements by Tiers 1-3

- High Visibility Crossings
- Curb Radius Reduction
- Bike Lanes
- Travel Lanes
- Green Bike Lane Conflict Zone Markings
- Pedestrian and Street Lighting
- Target, Design Speed Reduction
- ADA Compliance
- Transit Stop Enhancements (shelter, lighting, shade)



Enforcement MoreRoads Homeless Lighting BikeLanes NoMedian Weaving
SideStreetTraffic RecklessDriving U-Turns
SchoolZone Debris Congestion
TrafficCalming Landscaping Sidewalks
TurnLanes Speeding TrafficSignals Overpasses BusStops
PedestrianConcerns LessTraffic Maintenance LowerSpeedLimit
MoreLanes MedianOpenings
BikeConcerns Dangerous No-RTOR MoreSigns SpeedCameras
PedestrianCrossings Noise TrailConnection



VISIONZERO

HILLSBOROUGH

THANK YOU!