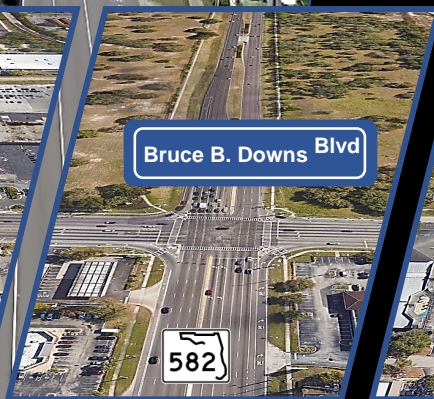
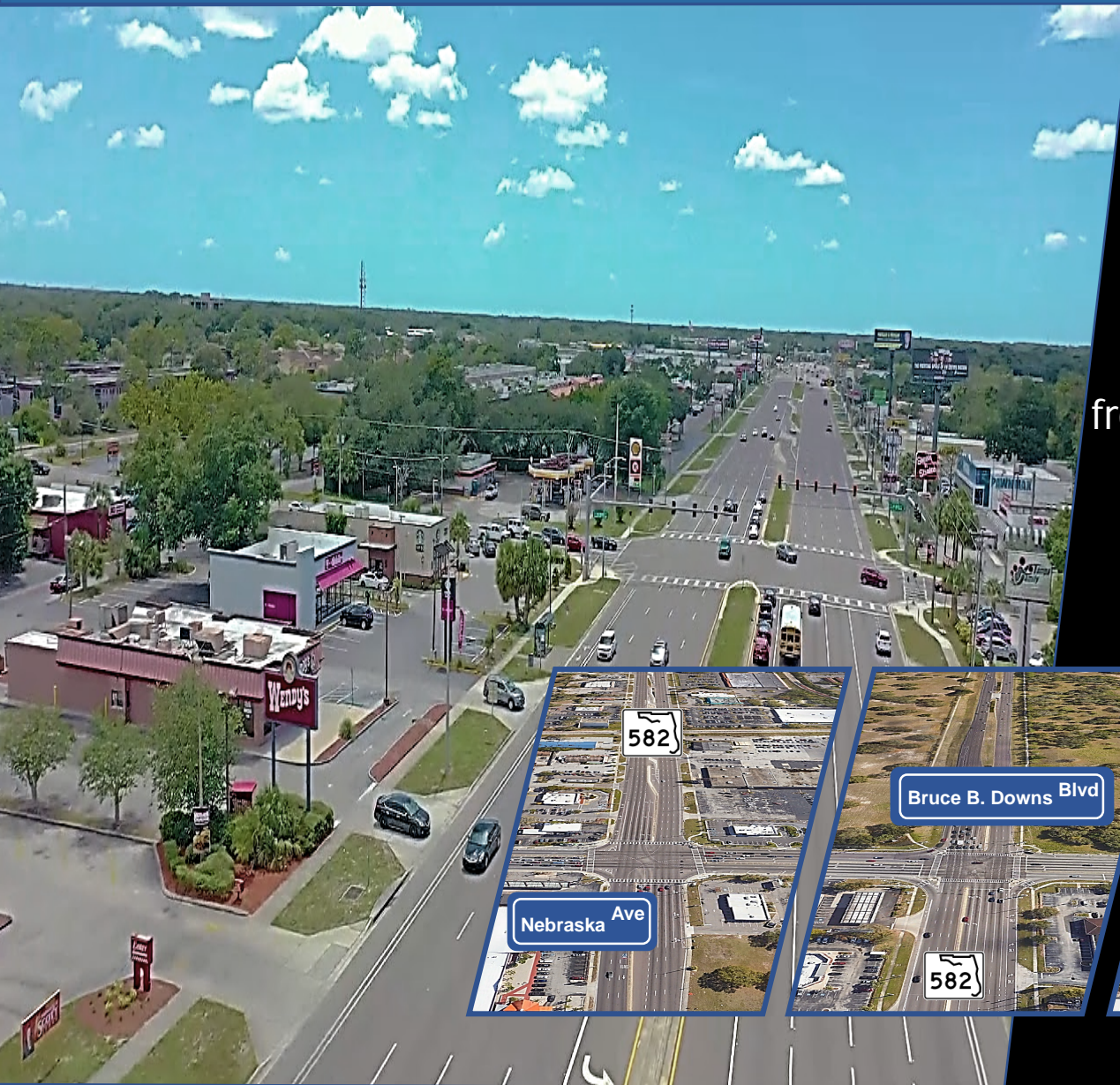


Fowler Avenue/State Road (SR) 582 Project Development & Environment Study from N. Florida Avenue (U.S. 41) to West of N. 56th Street/SR 583 Work Program Segment No. 448505-1

**HILLSBOROUGH TPO
PROJECT KICK-OFF PRESENTATIONS
November/December 2022**



Fowler Avenue PD&E Study

Study Limits

- Begin: N Florida Ave (City of Tampa)
- End: West of N 56th St (City of Temple Terrace)

Purpose

- Safety
- Reduce traffic congestion
- Improve multi-modal accommodations

Improvements Being Evaluated

- Bicycle/Pedestrian Facilities
- Transit Alternatives - Nebraska Ave to Bruce B Downs Blvd
 - 1. Business Access & Transit (BAT) Lane
 - 2. Frontage Roads
 - 3. Median Guideway
- Innovative Intersections

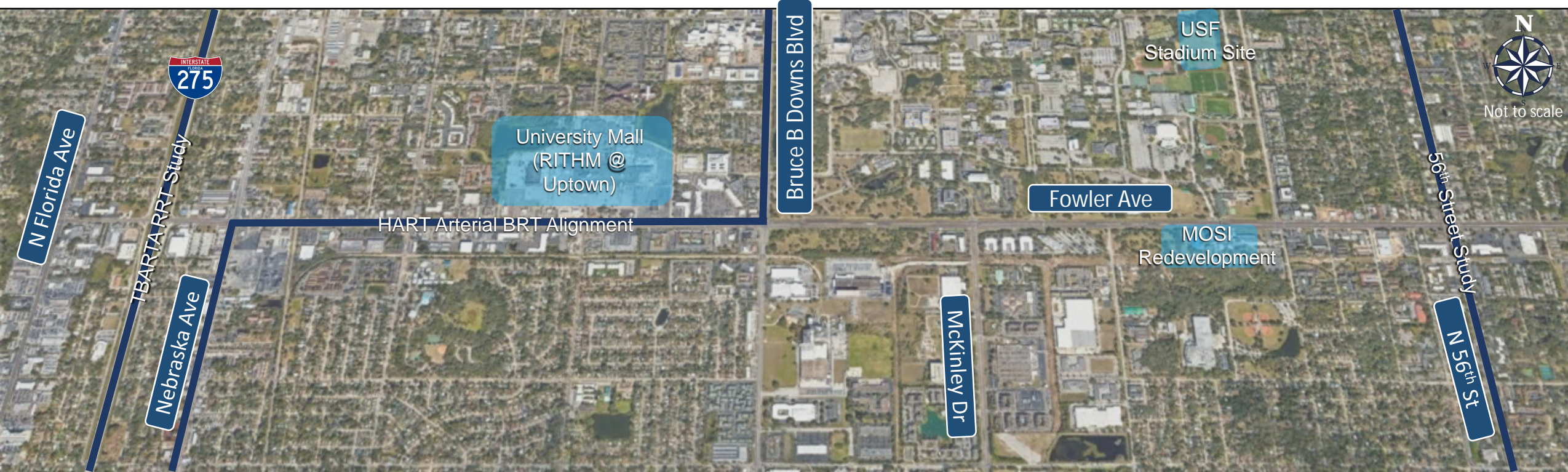


Related Studies

- ***HART Arterial Bus Rapid Transit (BRT) Alignment***
- ***Hillsborough Planning Commission - Fowler Avenue Vision Plan***
- TBARTA Regional Rapid Transit (RRT) Study
- FDOT N 56th Street / 50th Street Corridor Study

Redevelopment

- University Mall (RITHM @ Uptown)
 - RITHM - Research, Innovation, Technology, Humanity and Medicine
- Museum of Science and Industry (MOSI)
- USF Football Stadium

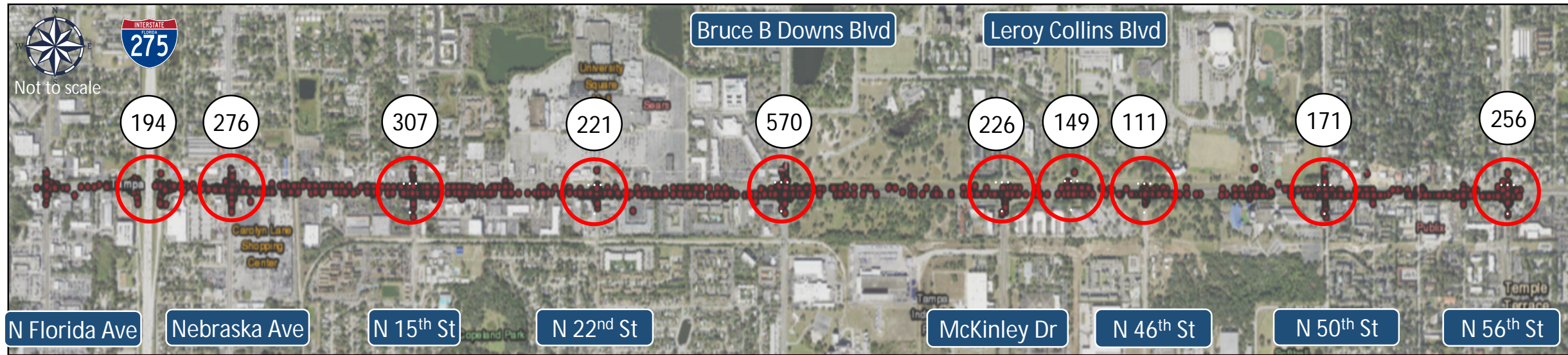


2015-2019 Five-year Crash Data

ALL CRASHES

3,320 total crashes

- 53 severe crashes - 9 fatalities, 46 incapacitating injuries
- 75% of crashes associated with 10 intersections
- 56% rear end; 20% angle & left turn

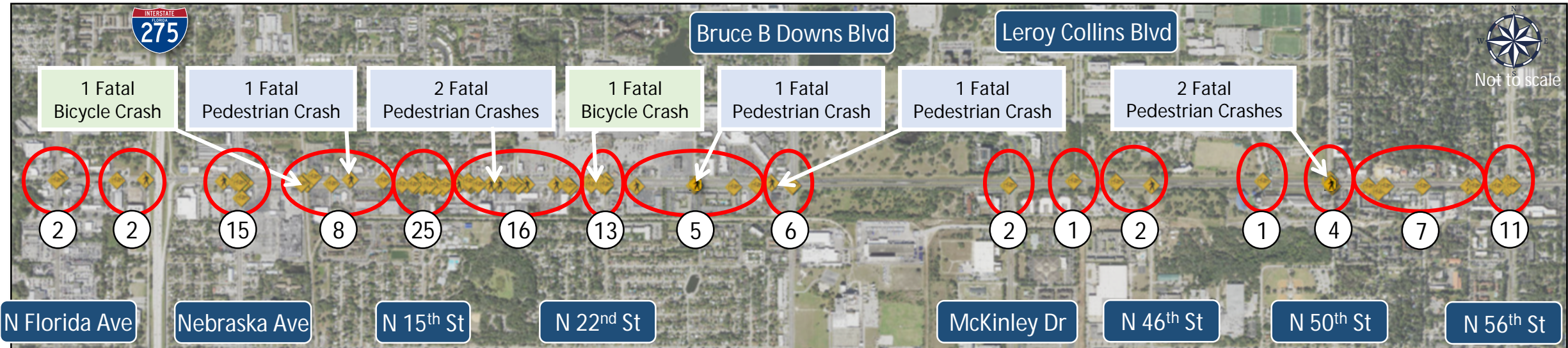


2015-2019 Five-year Crash Data

CRASHES WITH PEDESTRIANS AND BICYCLISTS

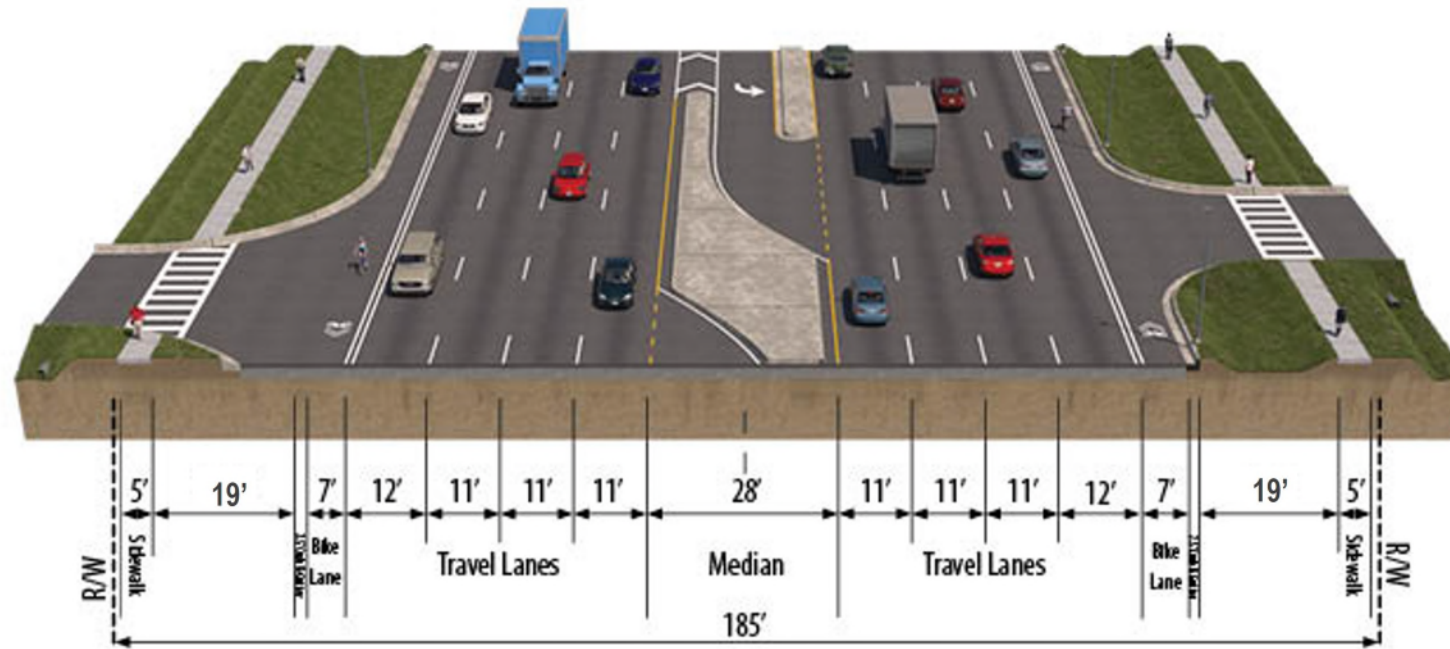
120 total crashes involving a pedestrian or bicyclist

- 9 fatalities and 17 incapacitating injuries - 51% of all severe crashes
- 88 (73%) between Nebraska Ave and Bruce B Downs Blvd
- 81 (68%) at or adjacent to signalized intersections



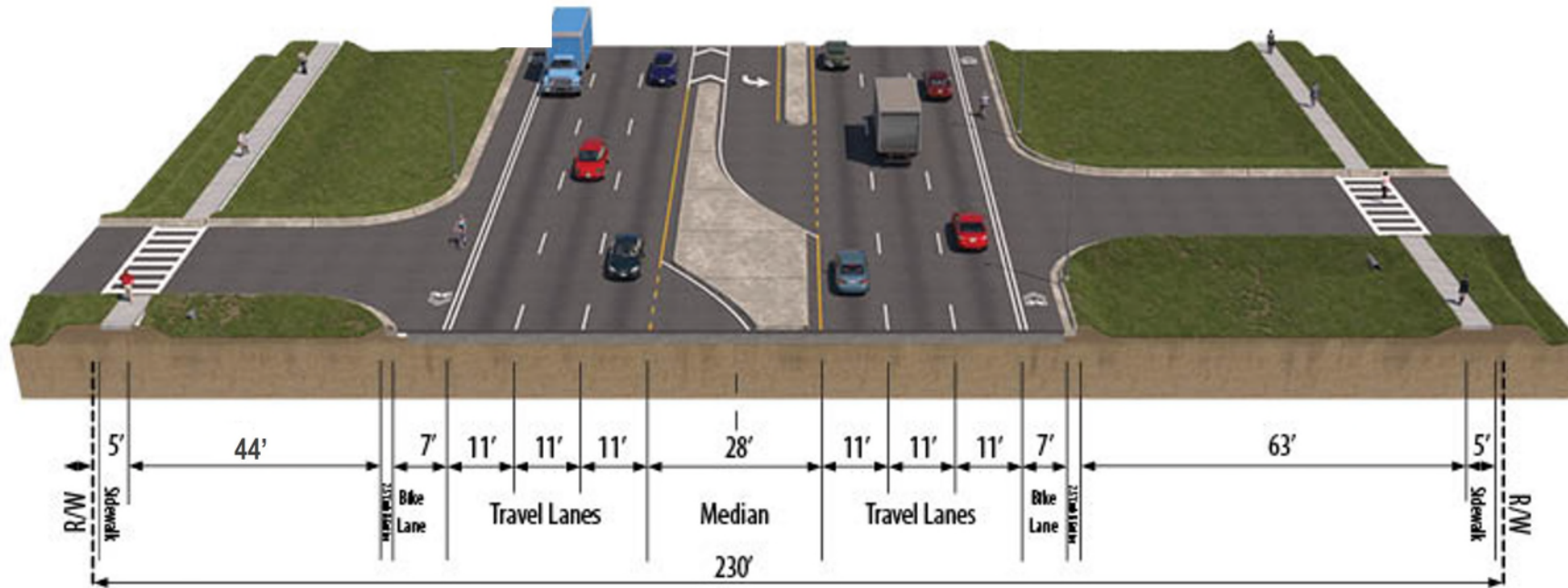
Existing Typical Section 1

Fowler Ave from Nebraska Ave to Bruce B. Downs Blvd



Existing Typical Section 2

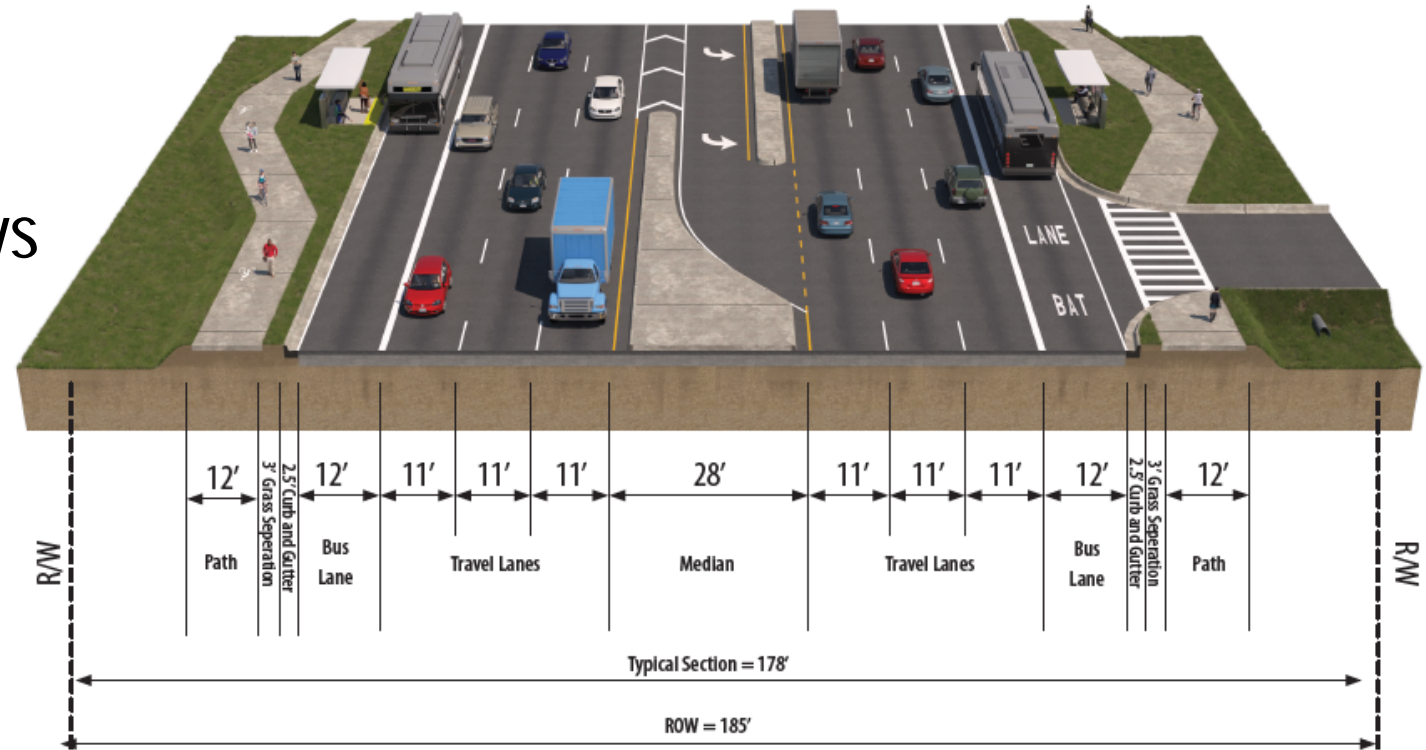
Fowler Ave from Bruce B. Downs Blvd to west of N. 56th Street



Fowler Ave from Nebraska Ave to Bruce B. Downs Blvd

Alternative #1 - Business Access & Transit (BAT) Lanes

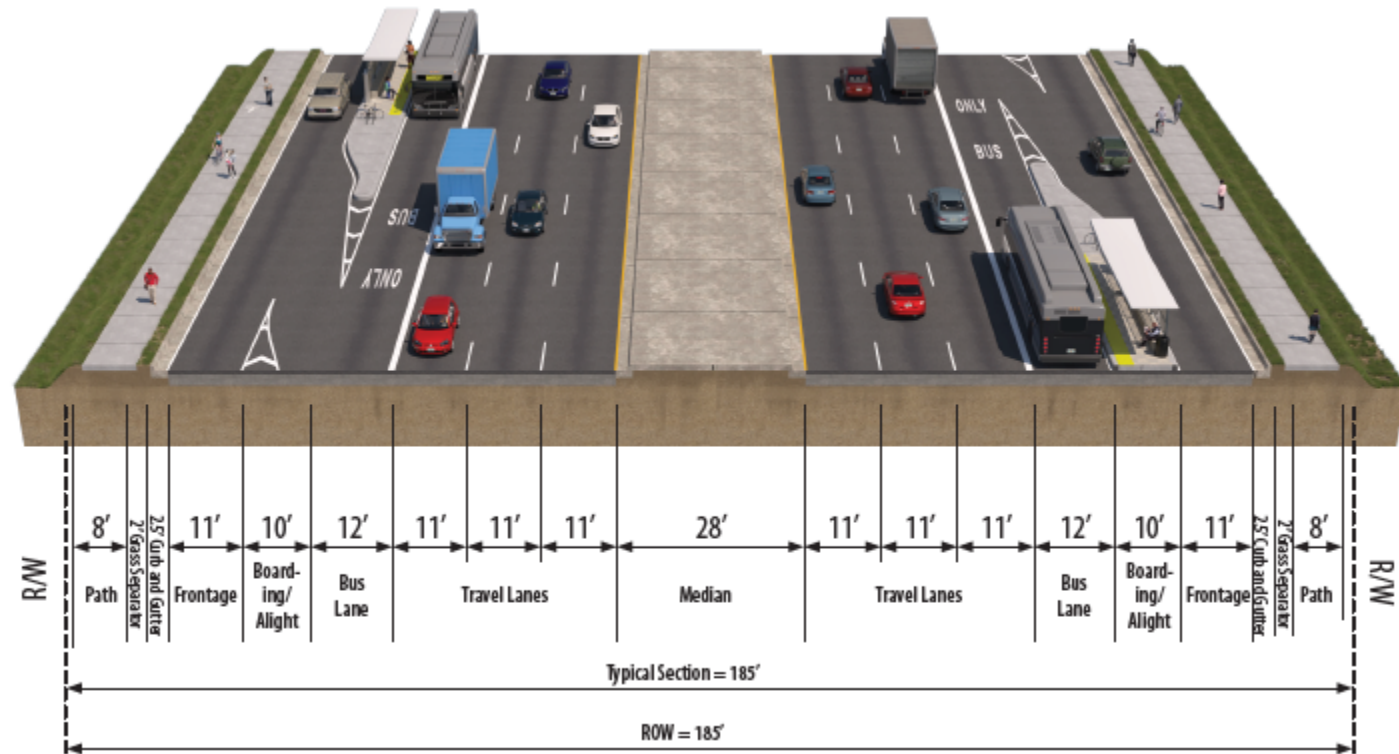
- Transit vehicles can make through movements
- General purpose vehicles can make right turns into driveways and at intersections
- General purpose vehicles not allowed to make through movements
- Located within existing right-of-way



Fowler Ave from Nebraska Ave to Bruce B. Downs Blvd

Alternative #2 - Frontage Road

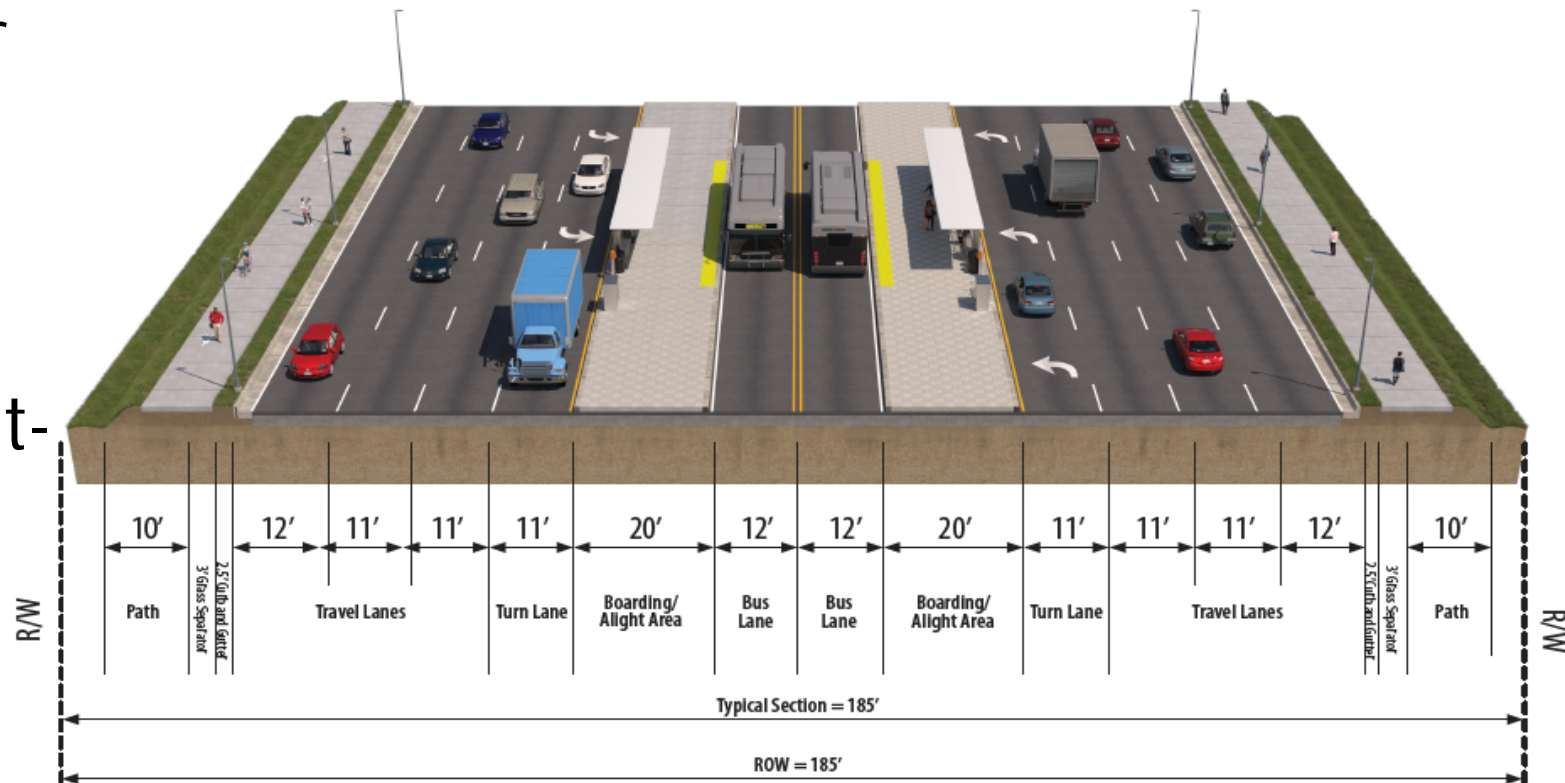
- Located parallel and separate from Fowler Ave mainline
- Bus in outside lane with transit stops/stations located at or near intersections
- Ingress/egress to frontage road at appropriate locations
- Bicycle/Pedestrian facilities located along frontage roads



Fowler Ave from Nebraska Ave to Bruce B. Downs Blvd

Alternative #3 - Median Guideway

- Located within median
- Stops/stations located at or near intersections
- Median U-Turns allowed at designated locations
- Located within existing right-of-way



Safety Strategies

- Nebraska Ave to Bruce B Downs Blvd
 - Speed Management
 - Deflection
- Bruce B Downs Blvd to west of N 56th St
 - Innovative Intersections

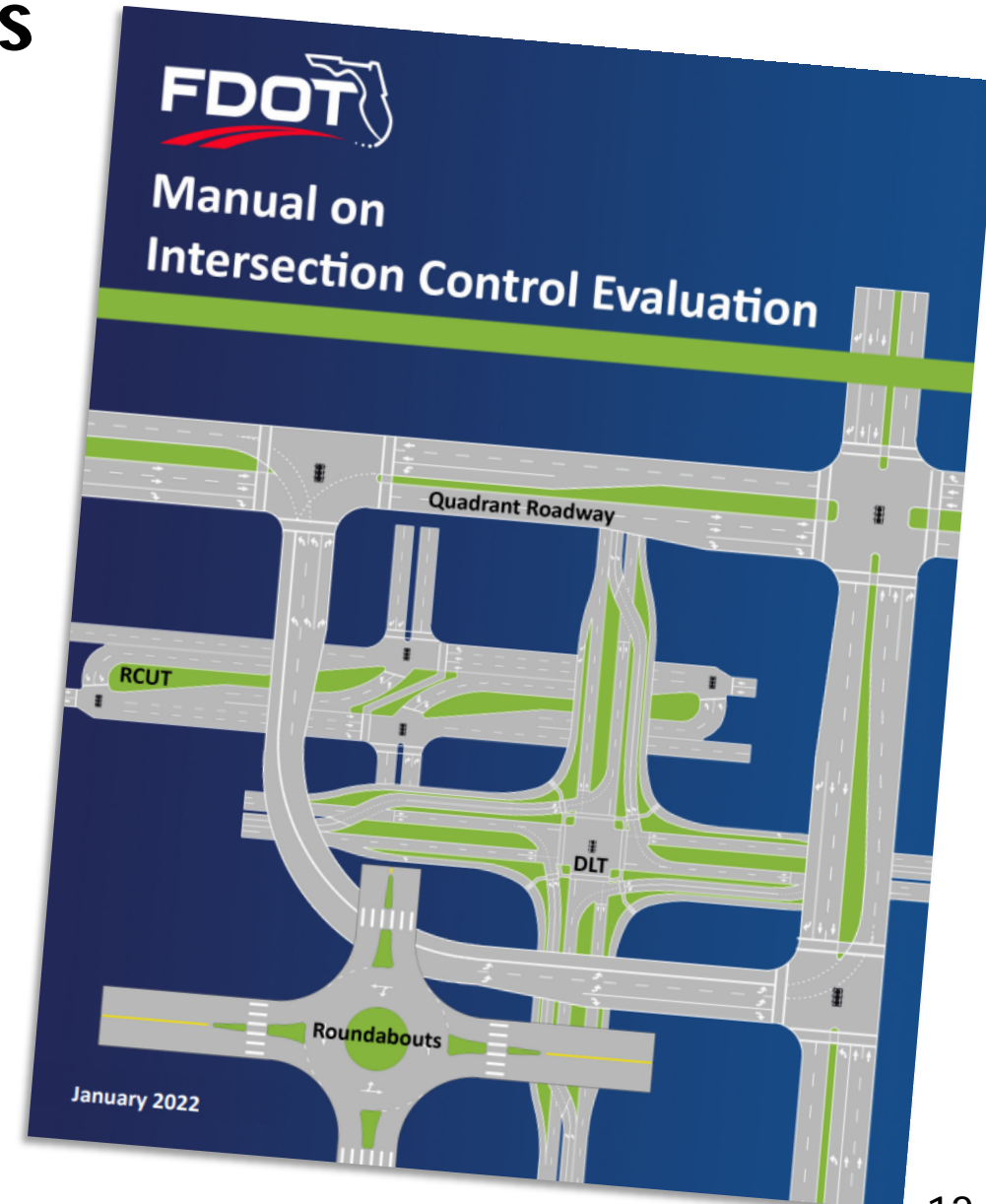


Innovative Intersection Alternatives

- Intended for major streets with high traffic volumes
- Improve vehicle, bicycle and pedestrian movements
- Reduce delay, increase efficiency
- Safer for all road users

Examples:

- Restricted Crossing U-Turn (RCUT)
- Displaced Left Turn (DLT)
- Thru-cut
- Single Loop



Public Engagement Approach

- Kick-off Meetings
- Newsletters
 - Kick-off
 - Public Alternatives Workshop
- Study Website
 - <https://www.fdotd7studies.com/projects/fowler-florida-to-56th/>
- Community Small Group Meetings
 - Priority to reach all demographics/communities in and adjacent to the study area
- Alternatives Public Workshop
 - In person and virtual
- Public Hearing (*if necessary*)



Study Schedule

Activity	2022			2023				2024
	2 nd Quarter	3 rd Quarter	4 th Quarter	1 st Quarter	2 nd Quarter	3 rd Quarter	4 th Quarter	1 st Quarter
Public Involvement								
Data Collection & Existing Conditions Analysis								
Alternatives Development & Evaluation								
Alternatives Public Workshop					★			
Public Hearing							★	
Study Approval								★

If Necessary

For More Information

Study website –

<https://www.fdotd7studies.com/projects/fowler-florida-to-56th/>

Or Contact –

Amber Russo, P.E.

FDOT Project Manager

(813) 975-6260

(800) 226-7220

Amber.Russo@dot.state.fl.us



Fowler Avenue Vision Study

Hillsborough TPO

November/December 2022

Jay Collins, AICP

Alvaro Gabaldon



Hillsborough
County Florida

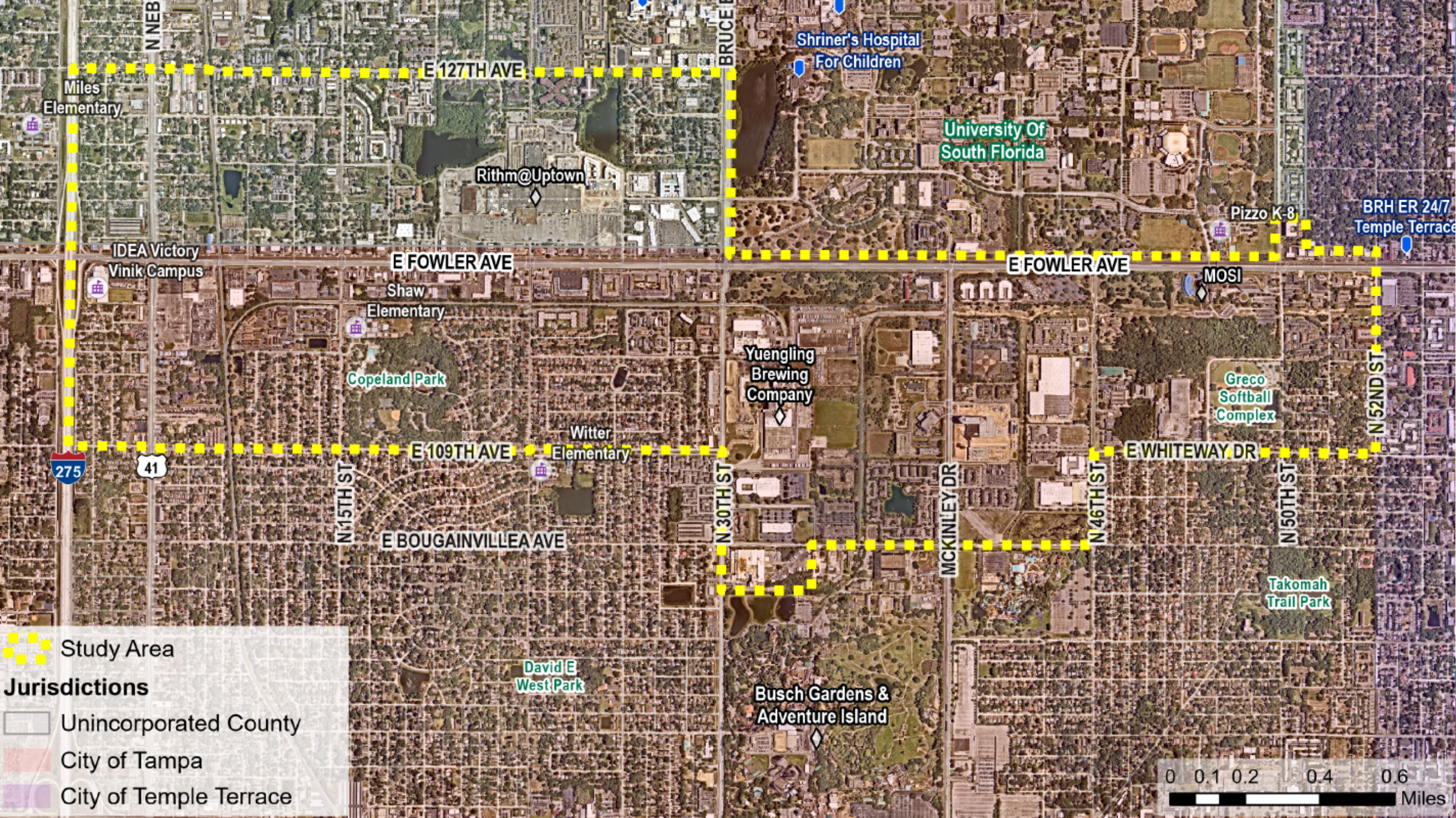


Plan
Hillsborough

Background

- Fowler Ave is at the intersection of Hillsborough County and City of Tampa boundaries
- Provides unique land use challenges
- Synergy with other studies and partners:
 - FDOT PD&E
 - HART Arterial BRT
 - USF
 - Innovation District/ University Mall





Study Area

Jurisdictions

- Unincorporated County
- City of Tampa
- City of Temple Terrace



Outcomes of the Study



A Comprehensive Vision Plan for Fowler Avenue



Coordination with HART and FDOT studies



Community education, engagement, and feedback



Comprehensive plan policy and strategies for implementation



Public Engagement

Community Workshops

Seeking input from the community on development trends and urban form

Mobile Engagement Lab

Community Ambassadors and Florida Center for Community Design and Research at USF led discussions and events

Vision Toolkit

Materials available for citizens to bring to their community organization, neighborhood, and others



Public Engagement

GET INVOLVED

Flowler Ave Comprehensive Vision Plan

Visit: bit.ly/planfowler

For More Information contact:
Alvaro Gabaldon (813) 582-7349

Hearing/Voice Impaired
Call ext 711



INVOLÚCRESE

Plan de Vision Integral de Fowler Ave

VISITE: bit.ly/planfowler

O comuníquese con
Alvaro Gabaldon
(813) 582-7349
Problemas de audición/voz
Llame al 711



Hillsborough
County Florida



Fowler Ave Vision Study Project Page

- Sign up for email updates
- Review presentations and other background information
- Bookmark upcoming meeting dates
- <https://planhillsborough.org/fowler-avenue-vision-study/>

The screenshot shows the website for the Fowler Avenue Vision Study. At the top, there is a navigation bar with the Plan Hillsborough logo, links to the Planning Commission, Transportation Planning Organization, and Hillsborough River Board, a search bar, and social media icons. Below the navigation bar is a menu with options like Plans, Meetings & Agendas, Interests, Data, Tools & Links, Be Involved, News, About, Contact, and FAQ. The main content area is titled "Fowler Avenue Vision Study" and includes a notice in Spanish: "Atención: Para traducir esta página al español, seleccione el idioma arriba en el menú 'Select Language'. Si necesita servicios de traducción adicionales, por favor llame al 813-272-5940 y marque el 1." Below this is a "Project Overview" section with an aerial photograph of Fowler Avenue. To the right of the overview is a "Stay Connected" section with a "Sign me up!" button and a "Related Studies" section listing "East Fowler Avenue Land Use Study", "HART TOD Study", and "HART BRT Study".



Hillsborough
County Florida



Project Timeline

November

Public
Engagement
Plan Finalized

December

1st
Community
Workshop
(approx.
12/12/2022)

January

- Mobile Engagement events
- Community Ambassador training



Hillsborough
County Florida



Plan
Hillsborough

Contact Us



Jay Collins, AICP

Special Area Studies Manager

(813) 582-7335

CollinsJ@plancom.org



Alvaro Gabaldon

Planner II

(813) 582-7349

GabaldonA@plancom.org



Hillsborough
County Florida



Plan
Hillsborough

Fowler Avenue Vision Study

Hillsborough CAC

November/December 2022

Jay Collins, AICP

Alvaro Gabaldon



Hillsborough
County Florida



Plan
Hillsborough