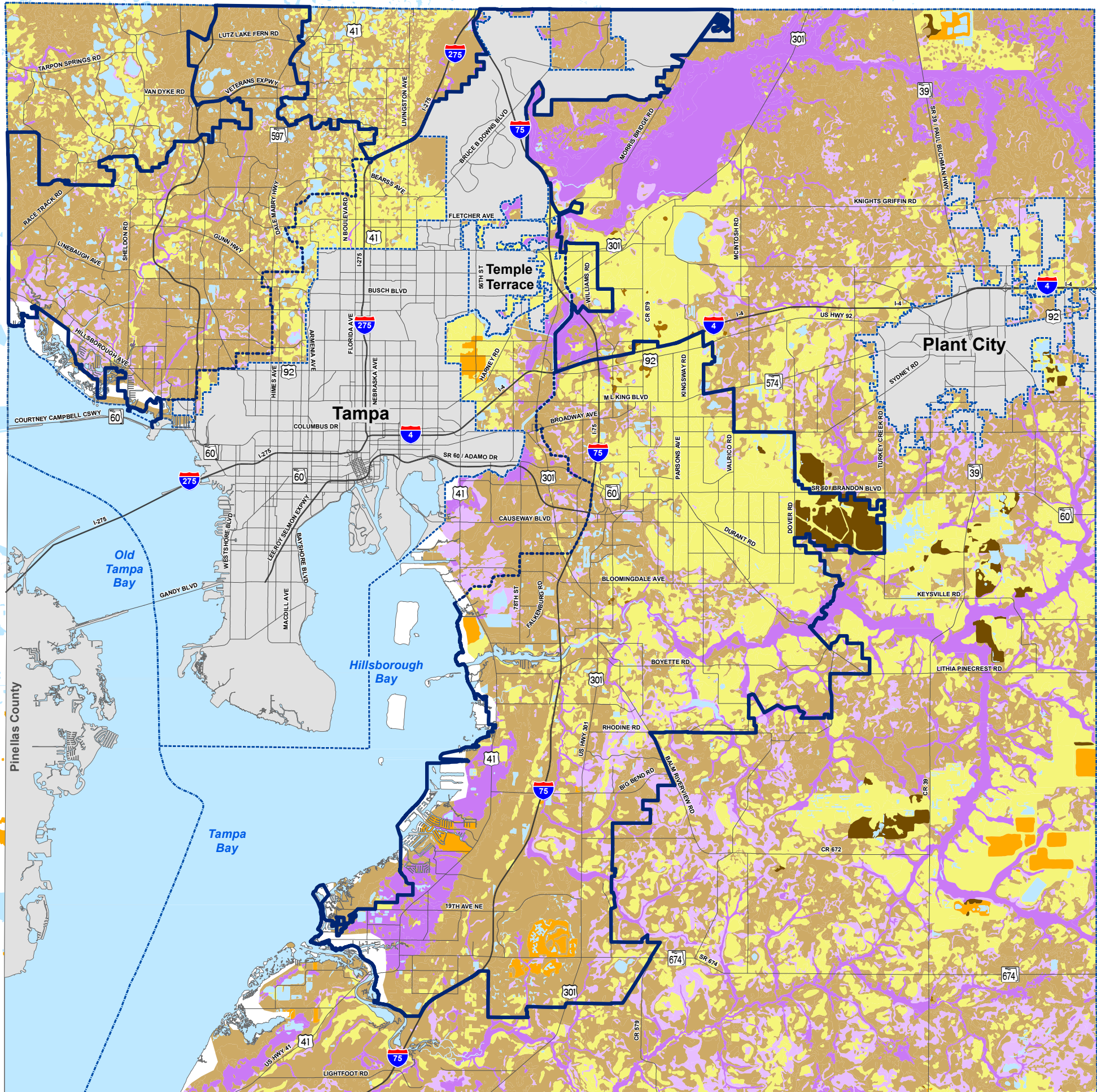


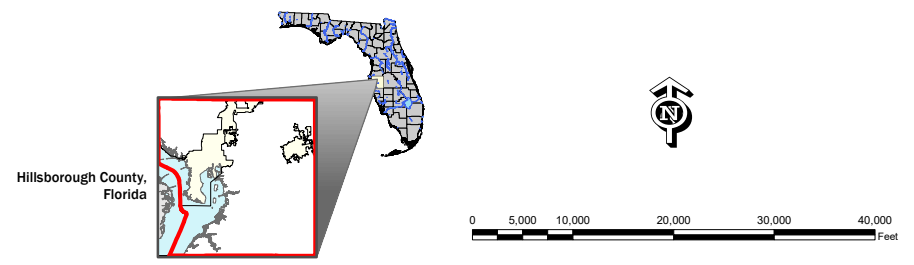
# Unincorporated Hillsborough County SOILS ADOPTED FUTURE LAND USE MAP SERIES



### Legend

- |                            |  |                                 |                             |
|----------------------------|--|---------------------------------|-----------------------------|
| <b>Hydrological Groups</b> |  | <b>Roads and Boundary Lines</b> |                             |
|                            | Group A: High Infiltration Rate When Thoroughly Wet      |                                 | County Boundary             |
|                            | Group B: Moderate Infiltration Rate When Thoroughly Wet  |                                 | Jurisdiction Boundary       |
|                            | Group C: Slow Infiltration Rate When Thoroughly Wet      |                                 | Tampa Service Area          |
|                            | Group D: Very Slow Infiltration Rate When Thoroughly Wet |                                 | Urban Service Area          |
|                            | Dual Group A/D: Can Be Adequately Drained                |                                 | Existing Major Road Network |
|                            | Dual Group B/D: Can Be Adequately Drained                |                                 | Limited Access Roads        |
|                            | Dual Group C/D: Can Be Adequately Drained                |                                 |                             |
|                            | Urban Land / Dumps / Pits / Swamps                       |                                 |                             |
|                            | Water  |                                 |                             |

### Location Diagram and Reference Information



**DATA SOURCES AND LIMITATIONS:**  
 Soils Data: Natural Resources Conservation Service (NRCS)  
 MAJOR ROADS: See Adopted MPO Long Range Transportation Plan for specific improvements.  
 REPRODUCTION: This sheet may not be reproduced in part or full for sale to anyone without specific approval of the Hillsborough County City-County Planning Commission.  
 ACCURACY: It is intended that the accuracy of the base map comply with U.S. national map accuracy standards. However, such accuracy is not guaranteed by the Hillsborough County City-County Planning Commission. This map is for illustrative purposes only for the cities of Tampa, Temple Terrace and Plant City.

Author:  
 Date: 5/14/2020  
 Path: G:\gisroot\Projects\Cathy\Arcmap\NEW\_MXD\CompPlaUnpdate\_2020\Care\_2020\uhc\_soils\_2020.mxd



For more information about our organization visit website: [www.planhillsborough.org](http://www.planhillsborough.org)