

HC CPA 21-10 Background Data and Analysis*

*This document serves to provide background data and analysis for the Recreation and Open Space Section. It is intended to meet the requirements of Chapter 163.3177(1)(f) and is non-adopted material.

This document only includes items not already included as part of the amendment package. For example, the public outreach memorandum summarizes data from public outreach, and is not repeated here, but was still utilized as analysis support for the amendment.

Introduction

The [Recreation and Open Space Section](#) serves to update the currently adopted [Recreation and Open Space Element](#) of the Unincorporated Hillsborough County Comprehensive Plan. The last time this amendment went through a major update was in 2008.

The Recreation and Open Space Section provides a framework for long-range planning of recreation parks, conservation parks, recreational trails and preserves. The overarching goal of the updated Section is to ensure an integrated system of recreation and resource-based parks that are accessible, inclusive, equitable and enhance quality of life for residents and visitors in the community. This is supported by concepts in the update such as safe and equitable access, diverse programming opportunities, continued inclusive engagement and involvement, strategic partnerships, and integrating parks with the built environment in a manner that enhances the overall community. This overall Goal and the concepts are supported by the relevant appropriate data and analysis as required under 163.3177(1)(f).

The language was developed via a collaborative approach with staff from Hillsborough County's Parks & Recreation and Conservation & Environmental Lands Management. It has been reviewed by regional and other county agencies.

The bulk of the local relevant and appropriate data and analysis is derived from two master plans, both of which had robust mapping, data analysis, surveys, and tremendous citizen engagement. These plans are the [Parks and Recreation Department Master Plan, 2017-2027](#) and the [Conservation and Environmental Lands Management Department Master Plan, March 2017](#). These plans include findings that are incorporated into the overall Goal, the seven Objectives, and the 66 Policies within the update. These plans cover topics such as access, inclusivity, facilities, partnerships, funding/fiscal sustainability, branding/identity, programming, community outreach, engagement, enhancing tourism, and more. These plans, as linked, are incorporated by reference as part of the data and analysis for this update.

Additionally, population projections and demographic information inform the update. These items can be found in Appendix A.

Recreational Parks - Parks and Recreation Department Master Plan 2017-2027 Data Highlights

Hillsborough County Parks and Recreation Department provides recreational opportunities to 1.5 million residents. The Department manages hundreds of facilities and 3,236 acres of parkland. A summarized list of the various facilities/parks are below:

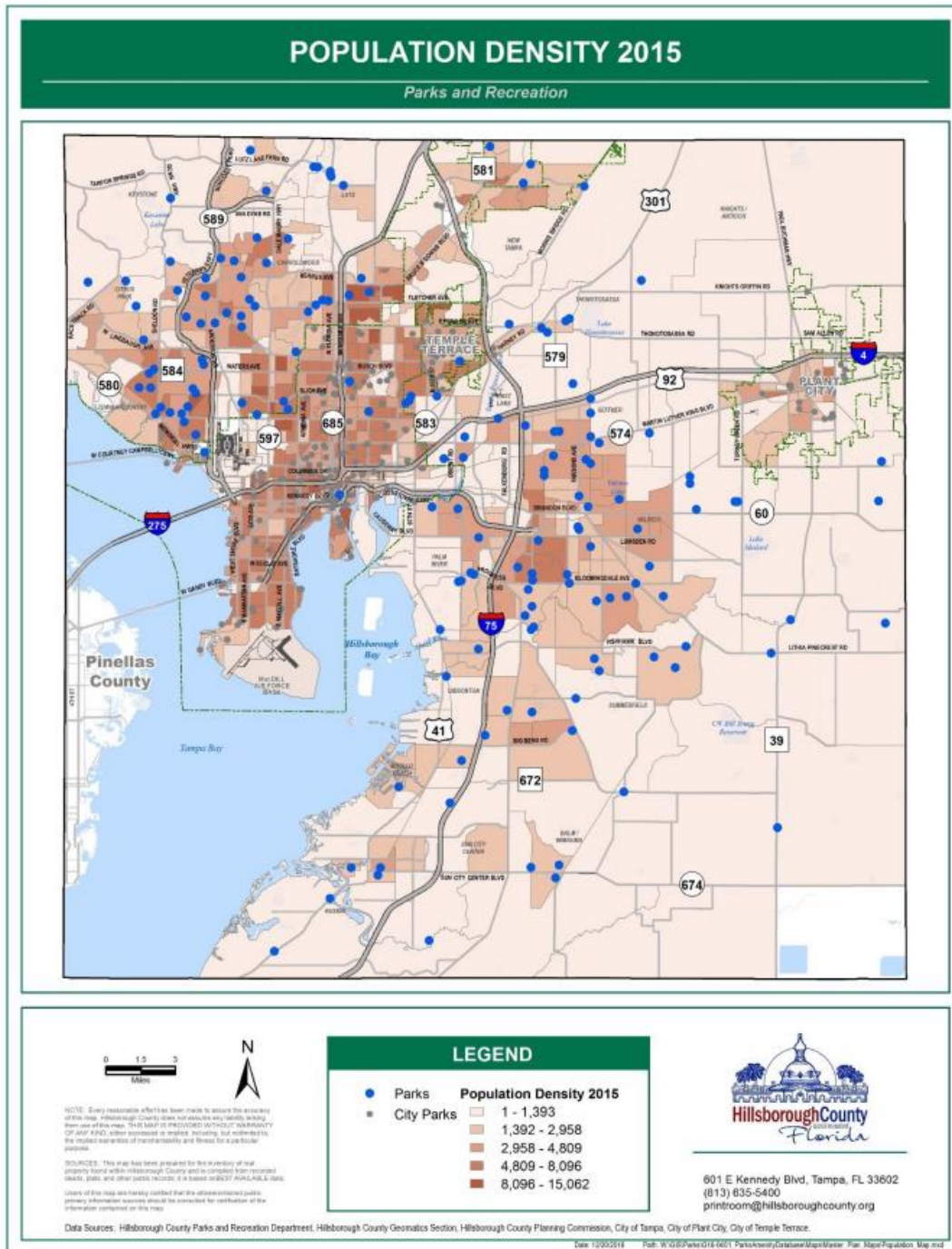
The Hillsborough County Parks and Recreation Department Amenities

- **3,236 Acres of Parkland**
- **53 Community Centers**
 - *27 Partnered Center*
 - *14 Full Service*
 - *9 Partial Service*
 - *3 Occupied*
- **166 Parks Including:**
 - *64 Community Parks*
 - *38 Sports Complexes*
 - *30 Neighborhood Parks*
 - *16 Special Use Facilities*
 - *10 Mini Parks*
 - *7 Undeveloped Properties*

Including:

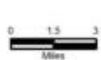
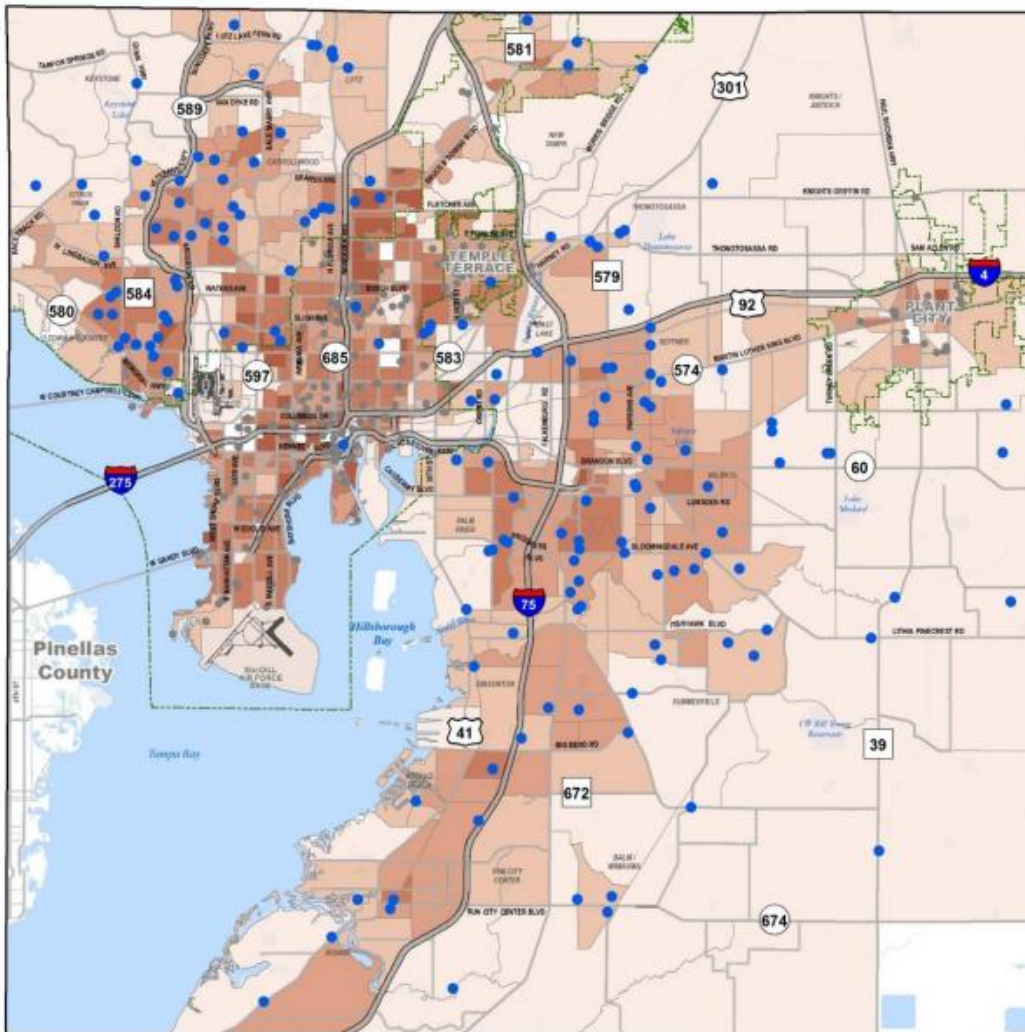
 - *143 Basketball Courts*
 - *111 Baseball Fields*
 - *85 Tennis Courts*
 - *59 Softball Fields*
 - *53 Soccer Fields*
 - *30 Football Fields*
 - *30 Multi-Purpose Fields*
 - *5 Cricket Fields*
 - *3 Lacrosse Fields*
- **118 Playgrounds**
- **73 Sports Leagues**
- **6 Dog Parks**
- **6 Fitness Centers**
- **4 Cemeteries**
- **3 Skate Parks**

Additionally, most parks are in close proximity of population density, both current and future, as detailed on the two maps below.



POPULATION DENSITY 2040

Parks and Recreation



NOTE: Every reasonable effort has been made to ensure the accuracy of this map. Hillsborough County does not assume any liability arising from use of this map. THIS MAP IS PROVIDED WITHOUT WARRANTY OF ANY KIND, either expressed or implied, including, but not limited to, the implied warranties of merchantability and fitness for a particular purpose.

SOURCES: This map has been prepared for the inventory of all property owned within Hillsborough County and is compiled from recorded maps, deeds, and other public records. It is based on BEST AVAILABLE DATA.

Users of this map are hereby notified that the aforementioned public information sources should be consulted for verification of the information contained on this map.

Data Sources: Hillsborough County Parks and Recreation Department, Hillsborough County Geomatics Section, Hillsborough County Planning Commission, City of Tampa, City of Plant City, City of Temple Terrace.

LEGEND

- Parks
 - City Parks
- | Population Density 2040 | |
|-------------------------|----------------|
| | 1 - 1,393 |
| | 1,392 - 2,958 |
| | 2,958 - 4,809 |
| | 4,809 - 8,096 |
| | 8,096 - 15,062 |



601 E Kennedy Blvd, Tampa, FL 33602
(813) 635-5400
printroom@hillsboroughcounty.org

Date: 12/30/2016 Path: W:\GIS\Projects\GIS-3491_ParksInventory\Database\Map\Master_Map_Population_Density_2040.mxd

At 3.5 acres per person, the parks acreage is slightly exceeding the level of service in the Hillsborough County's Comprehensive Plan (i.e., 3.4 acres per person).

Park Classification	Park Land (Acres)	Acres provided (Per 1,000 population)
Sports Complexes	1,305	1.42
Community Parks	1,060	1.16
Neighborhood Parks	183	0.2
Mini-Parks	27	0.03
Special Use Facility	167	0.15
Undeveloped Property	494	0.53
TOTAL CURRENT ACREAGE	3,236	3.5
Comprehensive Plan Standard	3,142	3.4

Please see the [Parks and Recreation Department Master Plan, 2017-2027](#) for comprehensive local data and analysis used in the update

Conservation Parks (conservation parks, wilderness preserves and trails) - Conservation and Environmental Lands Management Department Master Plan, March 2017 – Data Highlights

There are also over 80,000 acres of conservation and environmental lands managed by the Hillsborough County Conservation and Environmental Lands Department. These include conservation parks, wilderness preserves and trails. 2.8 million people visit these parks annually. More than half a million people live within one mile of a conservation park or preserve and more than 2.5 million live within ten minutes.

As part of the 2017 master planning process, this area was rebranded as the “Tampa Bay Wilderness Area” (TBWA), with ten sites identified as “Destination Sites” based upon unique resources/activities.

The TBWA protects habitat, such as river floodplains, mangrove swamps, relict scrub communities, longleaf pine sandhills and flatwoods. Residents and visitors are provided opportunities for beach access, wildlife viewing, canoeing/kayaking, fishing, hiking biking and horseback riding.

Below are maps highlighting this information:

Park and Conservation Land Network

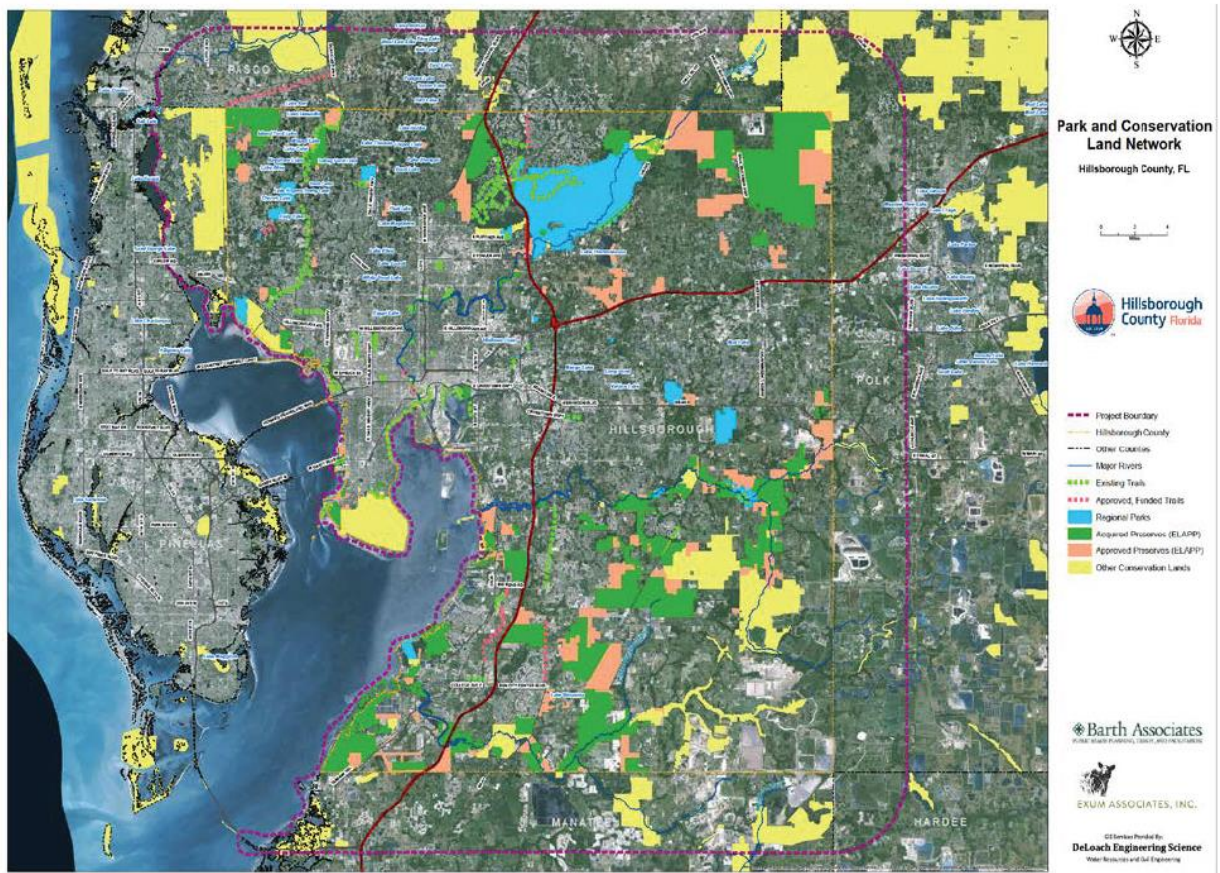


Figure 2.1: Distance to Conservation Parks or Preserves

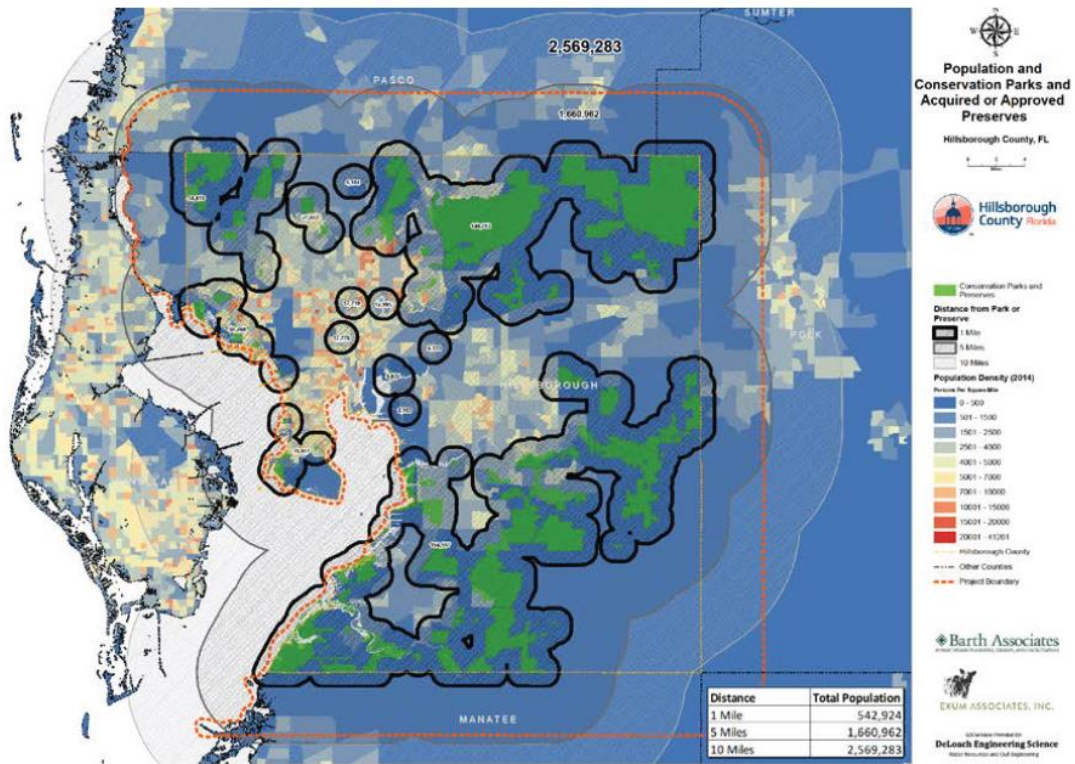


Table 2.1: Population within proximity of conservation parks or preserves

	Conservation Parks	All Preserves	Approved/ Acquired Preserves	Conservation Parks & All Preserves	Conservation Parks and Approved/ Acquired Preserves
Population within 1 Mile	105,429	619,117	499,319	626,906	542,924
Population within 5 Miles	954,404	1,671,130	1,627,739	1,671,136	1,660,962
Population within 10 Miles	1,937,179	2,589,681	2,503,236	2,589,683	2,569,283

Please see the [Conservation and Environmental Lands Management Department Master Plan, March 2017](#) for comprehensive local data and analysis used in the update.

Appendix A: Population and Demographic Information

Source: Hillsborough County City-County Planning Commission

	Housing Units	Housing Units	Housing Units	Existing (2020)		Future (2045)
	Estimate	Estimate	Estimate	Estimate	Projection	
Jurisdictions	2010	2015	2019	2020	2045	2020-2045 Housing Units
Unincorporated Hillsborough County	327,560	348,142	375,870	384,227	534,788	150,561

Sources:

2010-2020 Housing Units Estimates from Table 1. Estimates of Housing Units by County and City in Florida. [https://www.bebr.ufl.edu/Housing Units](https://www.bebr.ufl.edu/Housing%20Units)

Jurisdiction-level estimates distributed to residential parcels. Parcel Data from Hillsborough County Property Appraiser (Accessed: September 20, 2021)

0

TAZ-level projections from 2025-2045 Long Range Growth Forecasts (Socioeconomic Data). <http://www.planhillsborough.org/2045-long-range-growth-forecasts/>

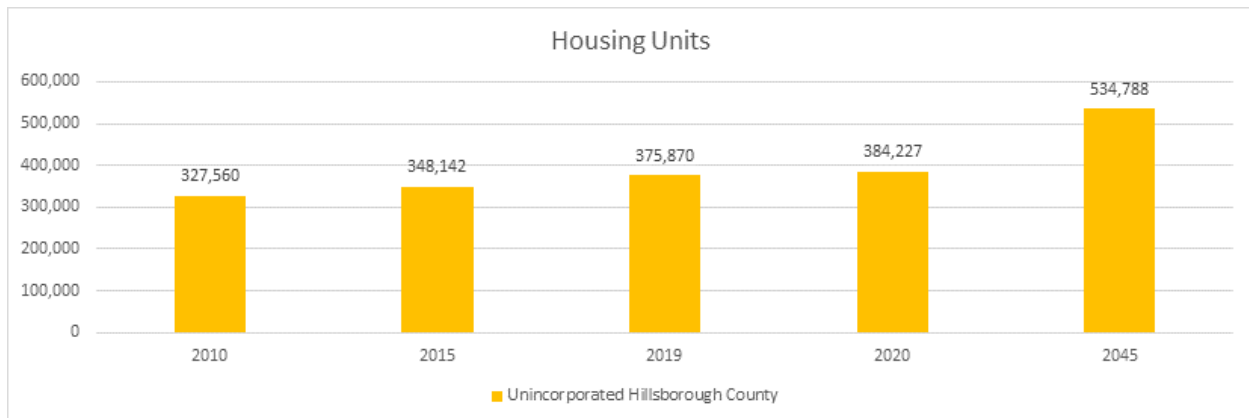
Share of TAZ-level projection calculated using parcel-level housing units.

If population in the target area is 50% of TAZ population, then 50% of the projection is assumed to be inside the target area.

Parcel-level housing unit estimates from Parcel Data from Hillsborough County Property Appraiser (Accessed: September 20, 2021)

Data processing by Plan Hillsborough

Housing Units estimates were distributed to residential parcels.



	Population	Population	Population	Existing (2020)	Population	Future (2045)
	Estimate	Estimate	Estimate	Estimate	Projection	
Jurisdictions	2010	2015	2019	2020	2045	2020-2045 New Residents
Unincorporated Hillsborough County	834,255	905,007	988,250	1,019,128	1,300,037	280,909

Sources:

2010-2020 Population Estimates from Table 1. Estimates of Population by County and City in Florida. <https://www.bebr.ufl.edu/population>

Jurisdiction-level estimates distributed to residential parcels. Parcel Data from Hillsborough County Property Appraiser (Accessed: September 20, 2021)

Parcel-level population estimate = Appropriate Census persons per household times residential units in parcel

TAZ-level projections from 2025-2045 Long Range Growth Forecasts (Socioeconomic Data). <http://www.planhillsborough.org/2045-long-range-growth-forecasts/>

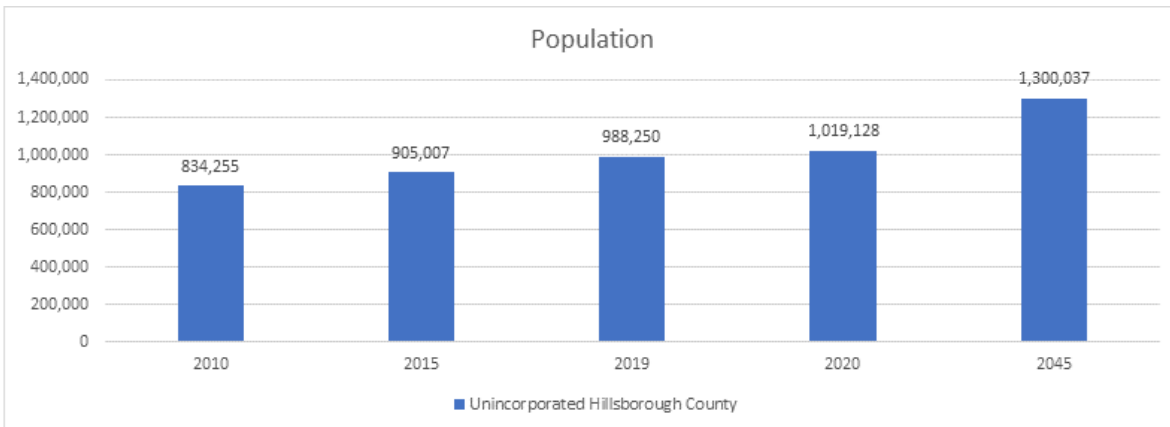
Share of TAZ-level projection calculated using parcel-level housing units.

If population in the target area is 50% of TAZ population, then 50% of the projection is assumed to be inside the target area.

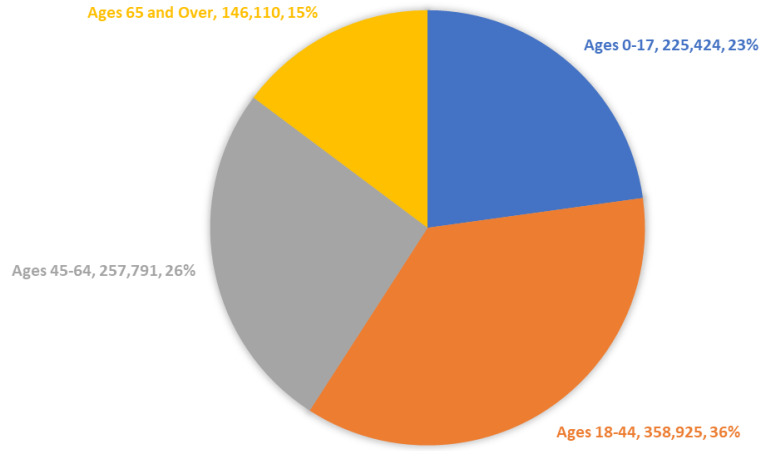
Parcel-level housing unit estimates from Parcel Data from Hillsborough County Property Appraiser (Accessed: September 20, 2021)

Data processing by Plan Hillsborough

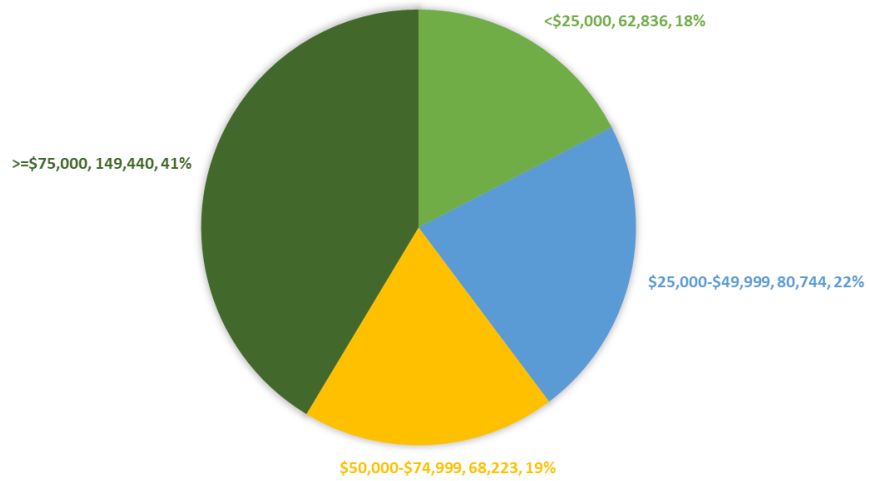
Population estimates were distributed to residential parcels.



**UNINCORPORATED HILLSBOROUGH COUNTY
2019 POPULATION BY AGE**



**UNINCORPORATED HILLSBOROUGH COUNTY
2019 HOUSEHOLDS BY REPORTED INCOME**



Unincorporated Hillsborough County 2020 Population by Race

