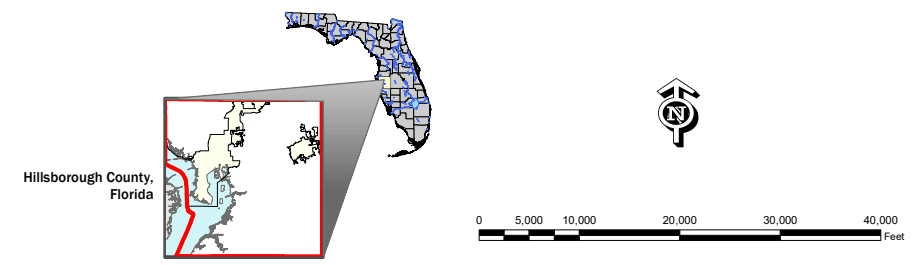


Unincorporated Hillsborough County BIODIVERSITY HOTSPOTS NON-ADOPTED BACKGROUND DATA

- Legend**
- 3-4 Focal Species Overlap
 - 5-6 Focal Species Overlap
 - 7+ Focal Species Overlap
- Roads and Boundary Lines**
- County Boundary
 - Jurisdiction Boundary
 - Tampa Service Area
 - Urban Service Area
 - Existing Major Road Network
 - Limited Access Roads

Location Diagram and Reference Information

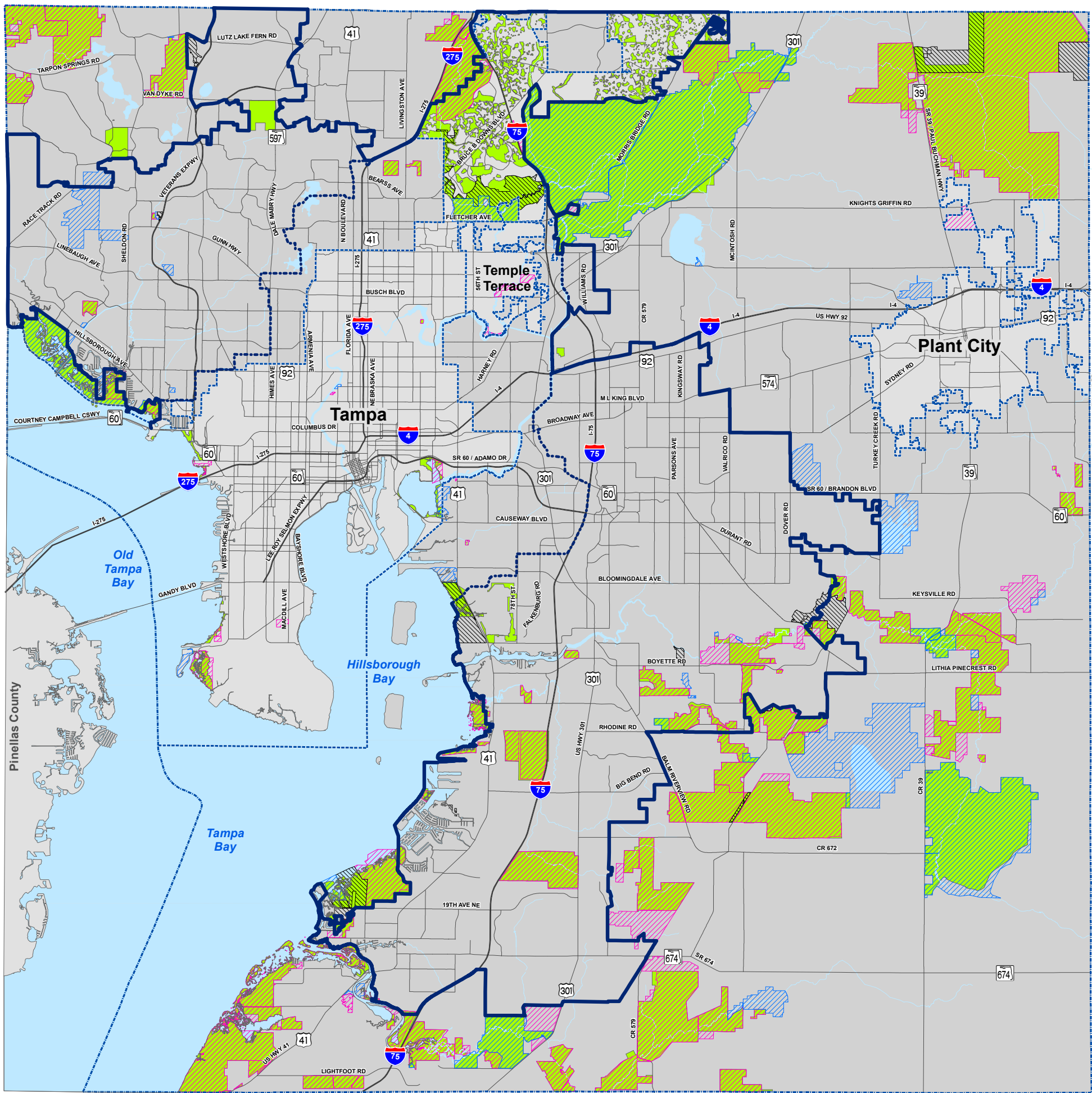


DATA SOURCES AND LIMITATIONS:
 BIODIVERSITY HOTSPOTS: Planning Commission, derived from Florida Fish and Wildlife Conservation Commission Data.
 MAJOR ROADS: See Adopted MPO Long Range Transportation Plan for specific improvements.
 REPRODUCTION: This sheet may not be reproduced in part or full for sale to anyone without specific approval of the Hillsborough County City-County Planning Commission.
 ACCURACY: It is intended that the accuracy of the base map comply with U.S. national map accuracy standards. However, such accuracy is not guaranteed by the Hillsborough County City-County Planning Commission. This map is for illustrative purposes only for the cities of Tampa, Temple Terrace and Plant City.

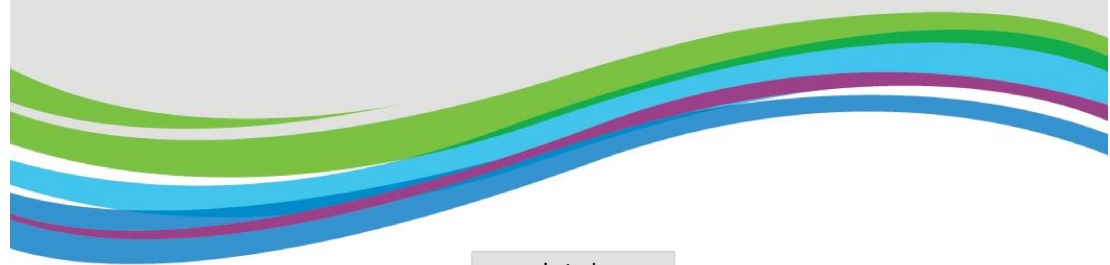
Author: cataniac
 Date: 5/14/2020
 Path: G:\gisroot\Projects\Cathy\Arcmap\NEW_MXD\CompPlaUnpdate_2020\Care_2020\uhc_biodiversity_hotspots_2020.mxd



For more information about our organization visit website: www.planhillsborough.org



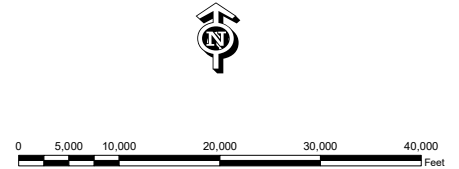
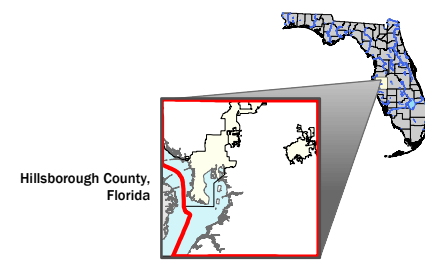
Unincorporated Hillsborough County CONSERVATION LAND USE AND ELAPP AREAS NON-ADOPTED BACKGROUND DATA



Legend

- Acquired
- Other Preservation
- Other Public Land
- Conservation Future Land Use Categories (Hillsborough County Natural Preservation & Tampa Environmentally Sensitive Areas)
- County Boundary
- Jurisdiction Boundary
- Tampa Service Area
- Urban Service Area
- Existing Major Road Network
- Limited Access Roads

Location Diagram and Reference Information

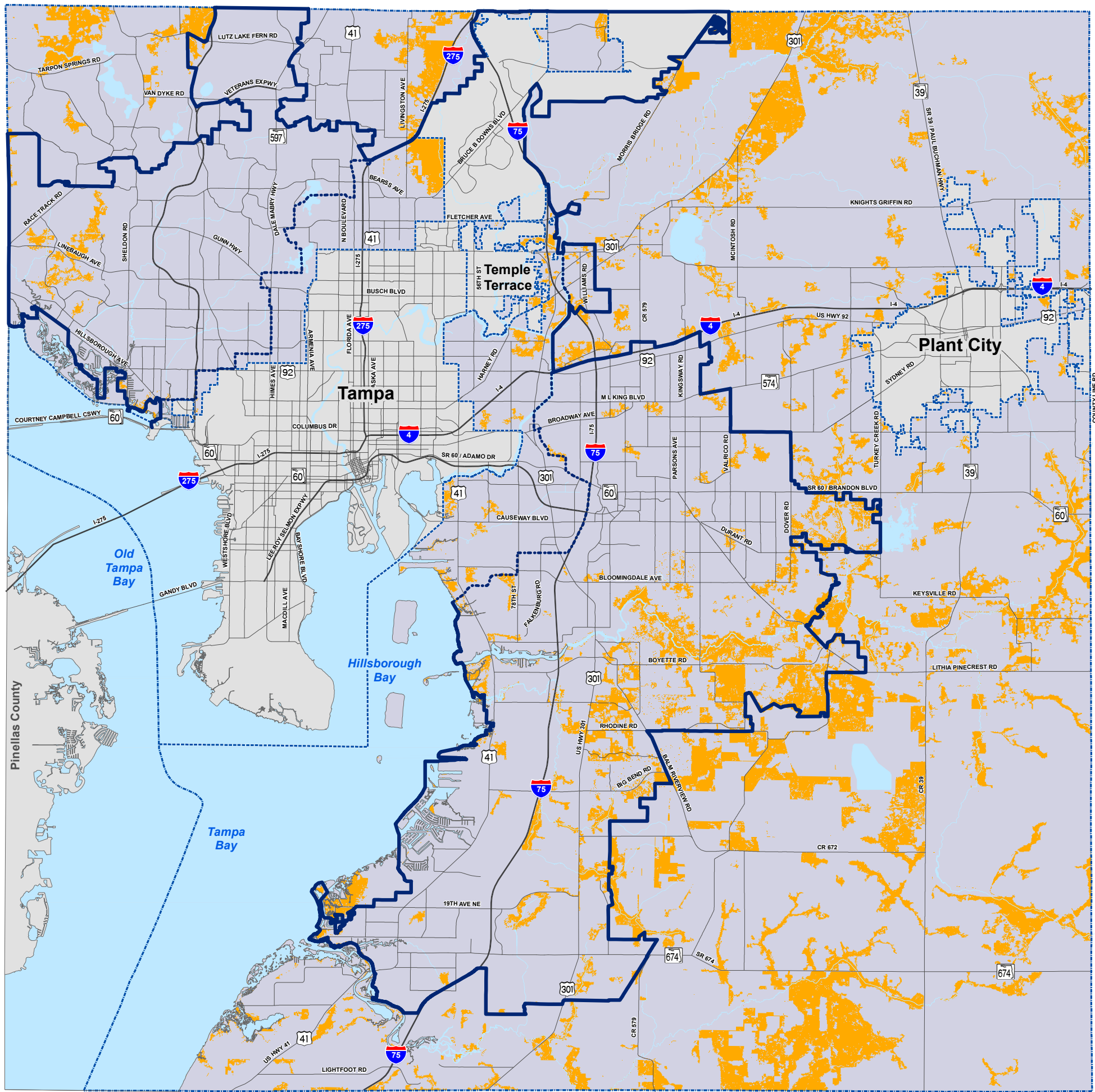


DATA SOURCES AND LIMITATIONS:
 ELAPP: Data from Hillsborough Geomatics.
 FUTURE LAND USE: Data from The Planning Commission.
 MAJOR ROADS: See Adopted MPO Long Range Transportation Plan for specific improvements.
 REPRODUCTION: This sheet may not be reproduced in part or full for sale to anyone without specific approval of the Hillsborough County City-County Planning Commission.
 ACCURACY: It is intended that the accuracy of the base map comply with U.S. national map accuracy standards. However, such accuracy is not guaranteed by the Hillsborough County City-County Planning Commission. This map is for illustrative purposes only for the cities of Tampa, Temple Terrace and Plant City.

Author: CWelsh
 Date: 5/14/2020
 Path: G:\gisroot\Projects\Cathy\Arcmap\NEW_MXD\CompPlaUnpdate_2020\Care_2020\uhc_conservation_land_use_elapp_2020.mxd



For more information about our organization visit website: www.planhillsborough.org

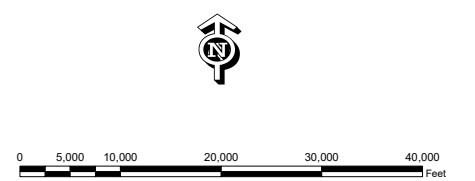
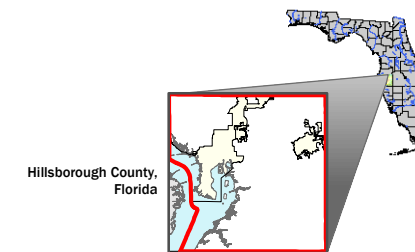


Unincorporated Hillsborough County STRATEGIC HABITAT CONSERVATION AREAS NON-ADOPTED BACKGROUND DATA

Legend

- STRATEGIC HABITAT CONSERVATION AREAS
- WATER
- Roads and Boundary Lines
 - County Boundary
 - Jurisdiction Boundary
 - Tampa Service Area
 - Urban Service Area
 - Existing Major Road Network
 - Limited Access Roads

Location Diagram and Reference Information



STRATEGIC HABITAT: Florida Fish and Wildlife Conservation
 MAJOR ROADS: See Adopted MPO Long Range Transportation Plan for specific improvements.
 REPRODUCTION: This sheet may not be reproduced in part or full for sale to anyone without specific approval of the Hillsborough County City-County Planning Commission.
 ACCURACY: It is intended that the accuracy of the base map comply with U.S. national map accuracy standards. However, such accuracy is not guaranteed by the Hillsborough County City-County Planning Commission. This map is for illustrative purposes only for the cities of Tampa, Temple Terrace and Plant City.

Author:
 Date: 5/14/2020
 Path: G:\gisroot\Projects\Cathy\Arcmap\NEW_MXD\CompPlaUnpdate_2020\Care_2020\uhc_strategic_habitat_2020.mxd



For more information about our organization visit website: www.theplanningcommission.org