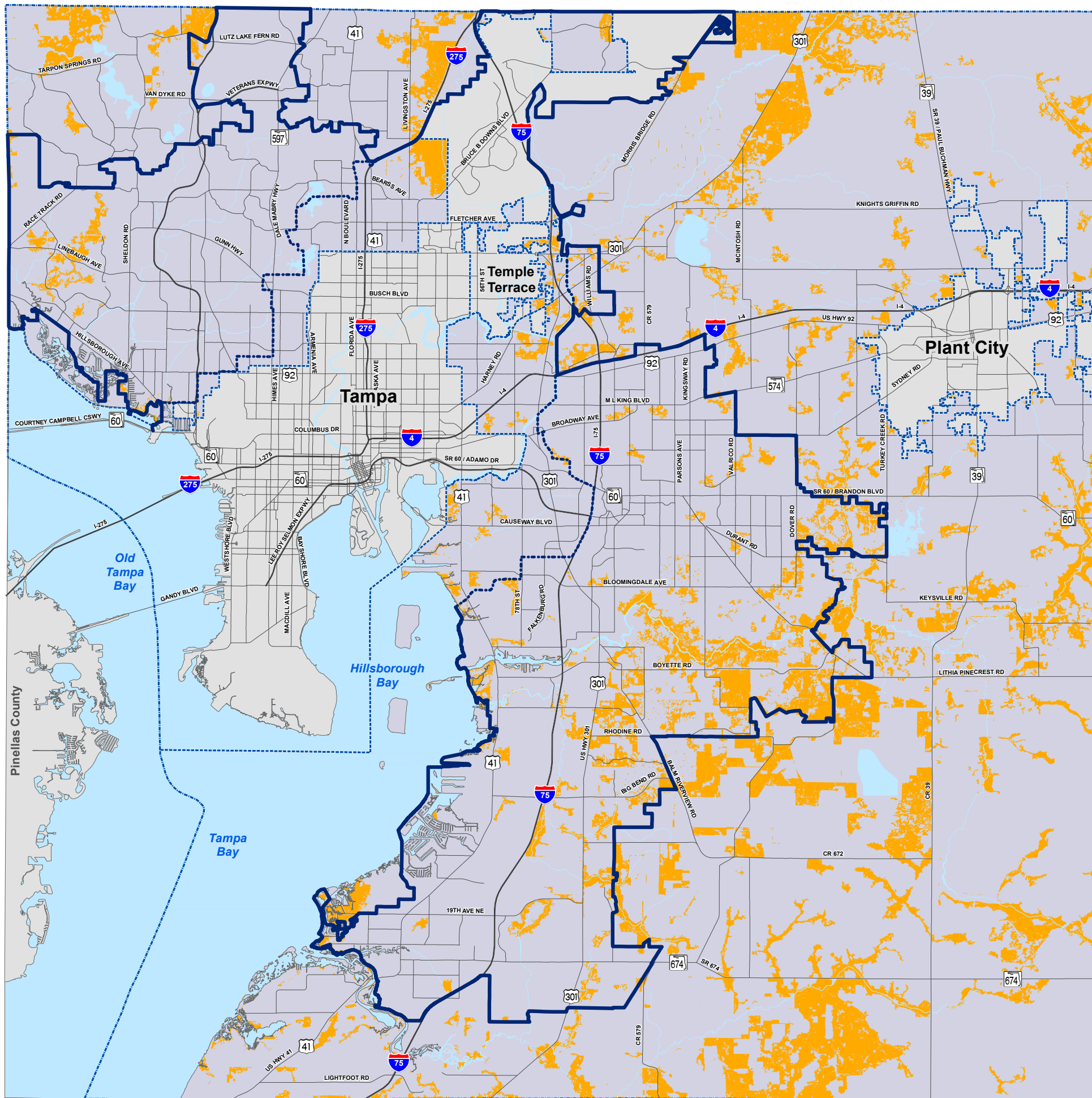


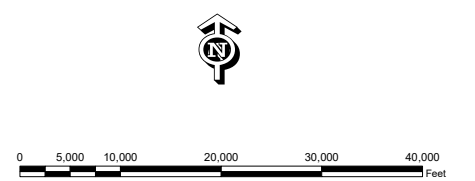
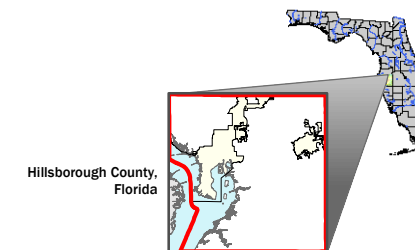
# Unincorporated Hillsborough County STRATEGIC HABITAT CONSERVATION AREAS NON-ADOPTED BACKGROUND DATA



### Legend

- STRATEGIC HABITAT CONSERVATION AREAS
- WATER
- Roads and Boundary Lines
  - County Boundary
  - Jurisdiction Boundary
  - Tampa Service Area
  - Urban Service Area
  - Existing Major Road Network
  - Limited Access Roads

### Location Diagram and Reference Information

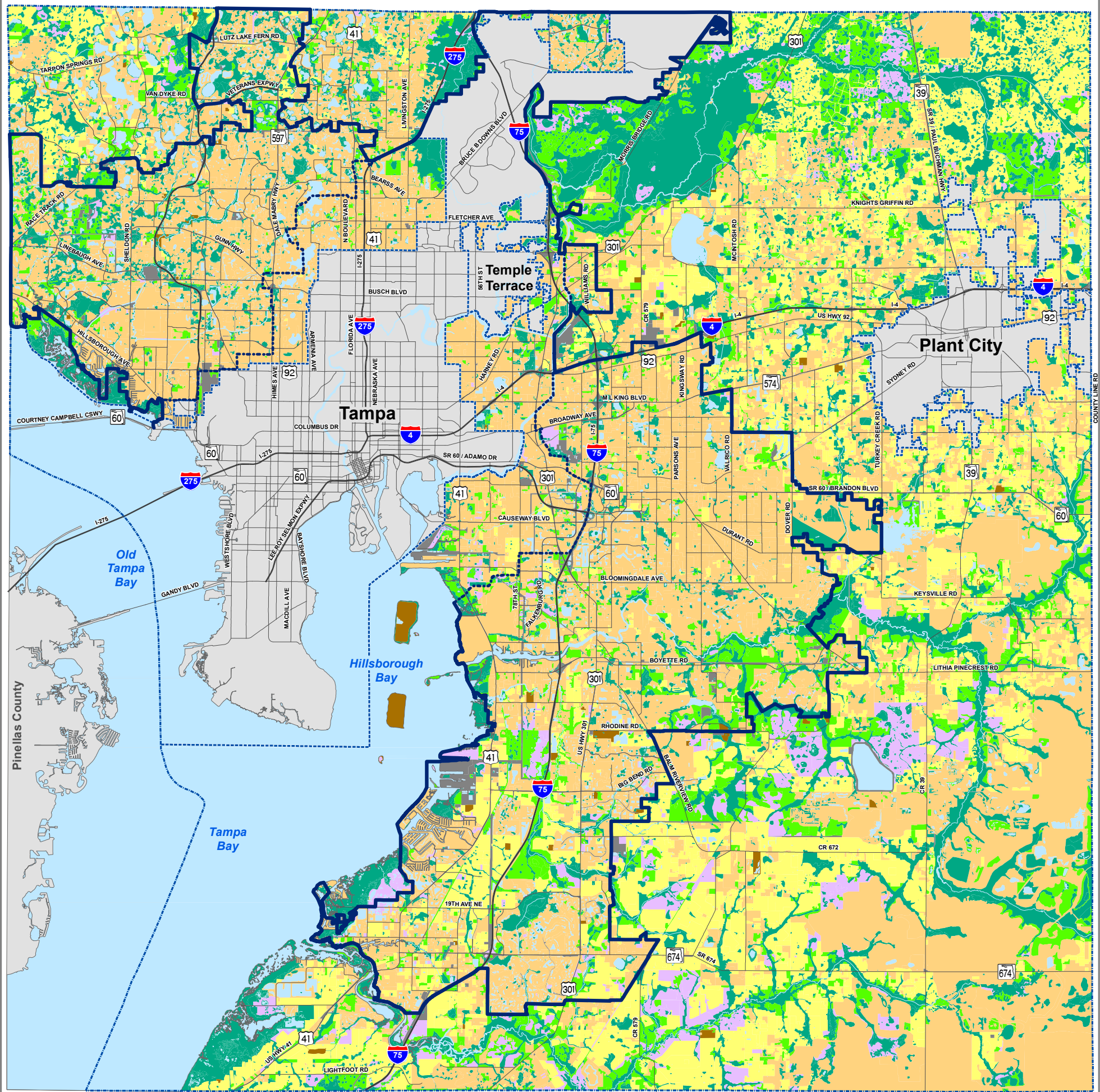


STRATEGIC HABITAT: Florida Fish and Wildlife Conservation  
 MAJOR ROADS: See Adopted MPO Long Range Transportation Plan for specific improvements.  
 REPRODUCTION: This sheet may not be reproduced in part or full for sale to anyone without specific approval of the Hillsborough County City-County Planning Commission.  
 ACCURACY: It is intended that the accuracy of the base map comply with U.S. national map accuracy standards. However, such accuracy is not guaranteed by the Hillsborough County City-County Planning Commission. This map is for illustrative purposes only for the cities of Tampa, Temple Terrace and Plant City.

Author:  
 Date: 5/14/2020  
 Path: G:\gisroot\Projects\Cathy\Arcmap\NEW\_MXD\CompPlaUnpdate\_2020\Care\_2020\uhc\_strategic\_habitat\_2020.mxd



For more information about our organization visit website: [www.theplanningcommission.org](http://www.theplanningcommission.org)

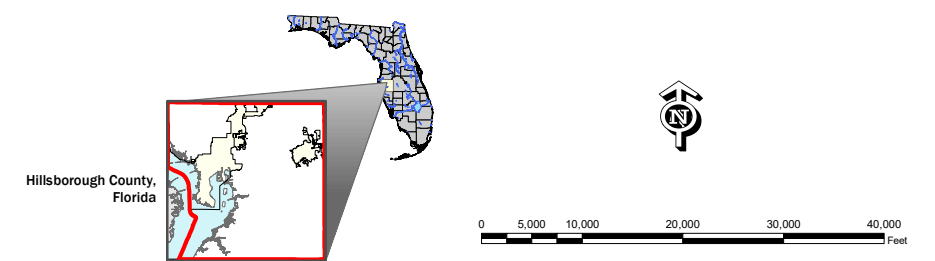


# Unincorporated Hillsborough County NATURAL SYSTEMS LAND USE LAND COVER NON-ADOPTED BACKGROUND DATA

## Legend

- |  |                                 |
|--|---------------------------------|
| <b>Land Use / Land Cover</b>                 | <b>Roads and Boundary Lines</b> |
| Urban / Extractive / Open                    | County Boundary                 |
| Agriculture                                  | Jurisdiction Boundary           |
| Rangeland                                    | Tampa Service Area              |
| Upland Forest                                | Urban Service Area              |
| Water  | Existing Major Road Network     |
| Wetlands                                     | Limited Access Roads            |
| Barren Land                                  |                                 |
| Transportation, Communication, and Utilities |                                 |

## Location Diagram and Reference Information



**DATA SOURCES AND LIMITATIONS:**  
 LAND USE LAND COVER: Southwest Florida Water Management District.  
 MAJOR ROADS: See Adopted MPO Long Range Transportation Plan for specific improvements.  
 REPRODUCTION: This sheet may not be reproduced in part or full for sale to anyone without specific approval of the Hillsborough County City-County Planning Commission.  
 ACCURACY: It is intended that the accuracy of the base map comply with U.S. national map accuracy standards. However, such accuracy is not guaranteed by the Hillsborough County City-County Planning Commission.

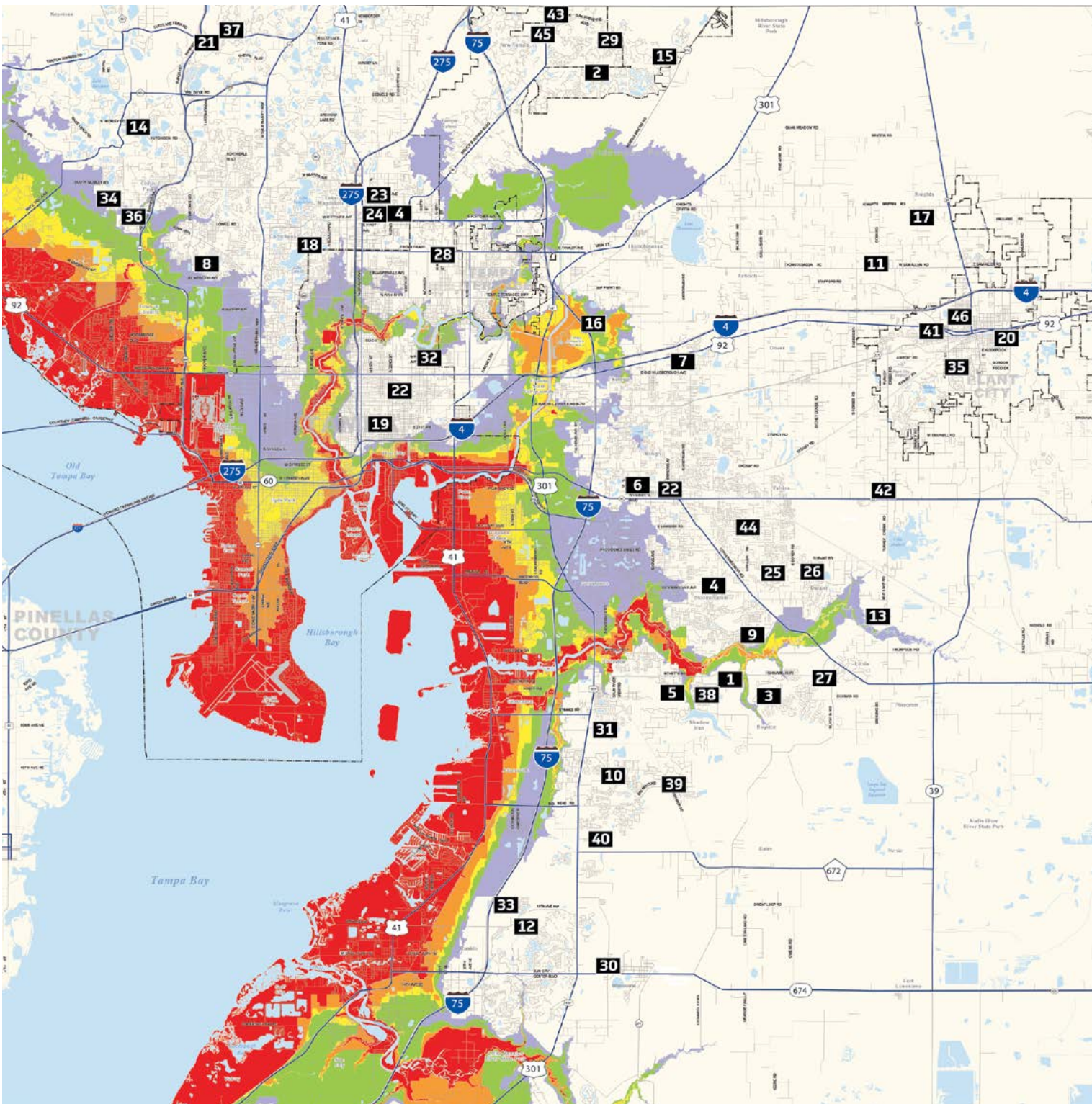
Author: CWelsh  
 Date: 5/14/2020  
 Path: G:\gisroot\Projects\Cathy\Arcmap\NEW\_MXD\CompPlaUnpdate\_2020\Care\_2020\uhc\_natural\_systems\_2020.mxd



For more information about our organization visit website: [www.planhillsborough.org](http://www.planhillsborough.org)

# Hillsborough County Evacuation Zones

— Evacuation Routes 1 Shelters



**Note:** This is a quick reference map. For a more detailed map visit:

[tbrpc.org/wp-content/uploads/2019/04/English-Common-Side.pdf](http://tbrpc.org/wp-content/uploads/2019/04/English-Common-Side.pdf)

Data provided courtesy of the Tampa Bay Regional Planning Council. Visit [tbrpc.org](http://tbrpc.org) for further information.

## Legend

Evacuation Level	Wind Velocity (MPH)	Potential Tide Heights (FT)	Areas To Be Evacuated
A	74 to 85	To 11'	Red areas plus all mobile home residents.
B	96 to 110	To 17'	Red and Orange areas plus all mobile home residents.
C	111 to 130	To 22'	Red, Orange, and Yellow areas plus all mobile home residents.
D	131 to 155	To 31'	Red, Orange, Yellow, and Green areas plus all mobile home residents.
E	156 and over	To 38'	Red, Orange, Yellow, Green, and Purple areas plus all mobile home residents.

	Shelter Names	Address	Pets
1	Barrington Middle	5925 Village Center Drive	✓
2	Benito Middle	10101 Cross Creek Blvd.	
3	Bevis Elementary	5720 Osprey Ridge Drive	
4	Bowers-Whitley	13609 N. 22nd St.	
5	Boyette Springs Elementary	10141 Sedgebrook Drive	
6	Brandon High	1101 Victoria St.	
7	Burnett Middle	1010 N. Kingsway Road	✓
8	Canella Elementary	10707 Nixon Road	
9	Cimino Elementary	4329 Culbreath Road	
10	Collins Elementary	12424 Summerfield Blvd.	
11	Cork Elementary	3501 N. Cork Road	
12	Cypress Creek Elementary	4040 19th Ave. N.E.	
13	Durant High	4748 Cougar Path	✓
14	Hammond Elementary	8008 N. Mobley Road	
15	Heritage Elementary	18201 East Meadows Road	
16	Jennings Middle	9325 Govenors Road	
17	Knights Elementary	4815 N. Keene Road	
18	Lake Magdalene Elementary	2002 Pine Lake Drive	
19	Lockhart Elementary	3719 N. 17th St.	
20	Marshall Middle	18 South Maryland Ave.	
21	McKittrick Elementary	5503 Lutz Lake Fern Road	
22	Middleton High	4801 N. 22nd St.	
23	Mort Elementary	1806 Bearss Ave.	
24	Muller Elementary	13615 N. 22nd St.	
25	Mulrennan Middle	4215 Durant Road	
26	Nelson Elementary	5413 Durant Road	
27	Newsome High	16510 Fish Hawk Blvd.	
28	Pizzo Elementary	11701 Bull Run	
29	Pride Elementary	18271 Kinnan St.	
30	Reddick Elementary	325 West Lake Drive	
31	Sessums Elementary	11525 Ramblecreek Drive	
32	Sheehy Elementary	6402 N. 40th St.	
33	Shields Middle	15732 Beth Shields Way	✓
34	Sickles High	7950 Gunn Highway	
35	Simmons Career Center	1202 W. Grant St.	
36	Sgt. Paul R. Smith Middle	14303 Citrus Pointe Drive	✓
37	Steinbrenner High	5575 W. Lutz Lake Fern Road	✓
38	Stowers Elementary	13915 Barrington Stowers Drive	
39	Summerfield Elementary	11990 Big Bend Road	
40	Sumner High School	10650 County Road 672	✓
41	Tomlin Middle	501 N. Woodrow Wilson	
42	Turkey Creek Elementary	5005 S. Turkey Creek Road	
43	Turner/Bartels Middle	9020 Imperial Oak Blvd.	✓

	Shelter Names	Address	Pets
44	Valrico Elementary	609 South Miller Road	
45	Wharton High	20150 Bruce B. Downs	
46	Wilson Elementary	702 English St.	

## The Saffir-Simpson Hurricane Scale

	Wind Speed	Type of Damage
<b>1</b>	74-95 mph	<b>Very dangerous winds will produce some damage:</b> Well-constructed frame homes could have damage to roof, shingles, vinyl siding and gutters. Large branches of trees will snap and shallowly rooted trees may be toppled. Extensive damage to power lines and poles likely will result in power outages that could last a few to several days.
<b>2</b>	96-110 mph	<b>Extremely dangerous winds will cause extensive damage:</b> Well-constructed frame homes could sustain major roof and siding damage. Many shallowly rooted trees will be snapped or uprooted and block numerous roads. Near-total power loss is expected with outages that could last from several days to weeks.
<b>3</b>	111-129 mph	<b>Devastating damage will occur:</b> Well-built framed homes may incur major damage or removal of roof decking and gable ends. Many trees will be snapped or uprooted, blocking numerous roads. Electricity and water will be unavailable for several days to weeks after the storm passes.
<b>4</b>	130-156 mph	<b>Catastrophic damage will occur:</b> Well-built framed homes can sustain severe damage with loss of most of the roof structure and/or some exterior walls. Most trees will be snapped or uprooted and power poles downed. Fallen trees and power poles will isolate residential areas. Power outages will last weeks to possibly months. Most of the area will be uninhabitable for weeks or months.
<b>5</b>	157 mph or higher	<b>Catastrophic damage will occur:</b> A high percentage of framed homes will be destroyed, with total roof failure and wall collapse. Fallen trees and power poles will isolate residential areas. Power outages will last for weeks to possibly months. Most of the area will be uninhabitable for weeks or months.

Source: <https://www.nhc.noaa.gov/aboutshws.php>