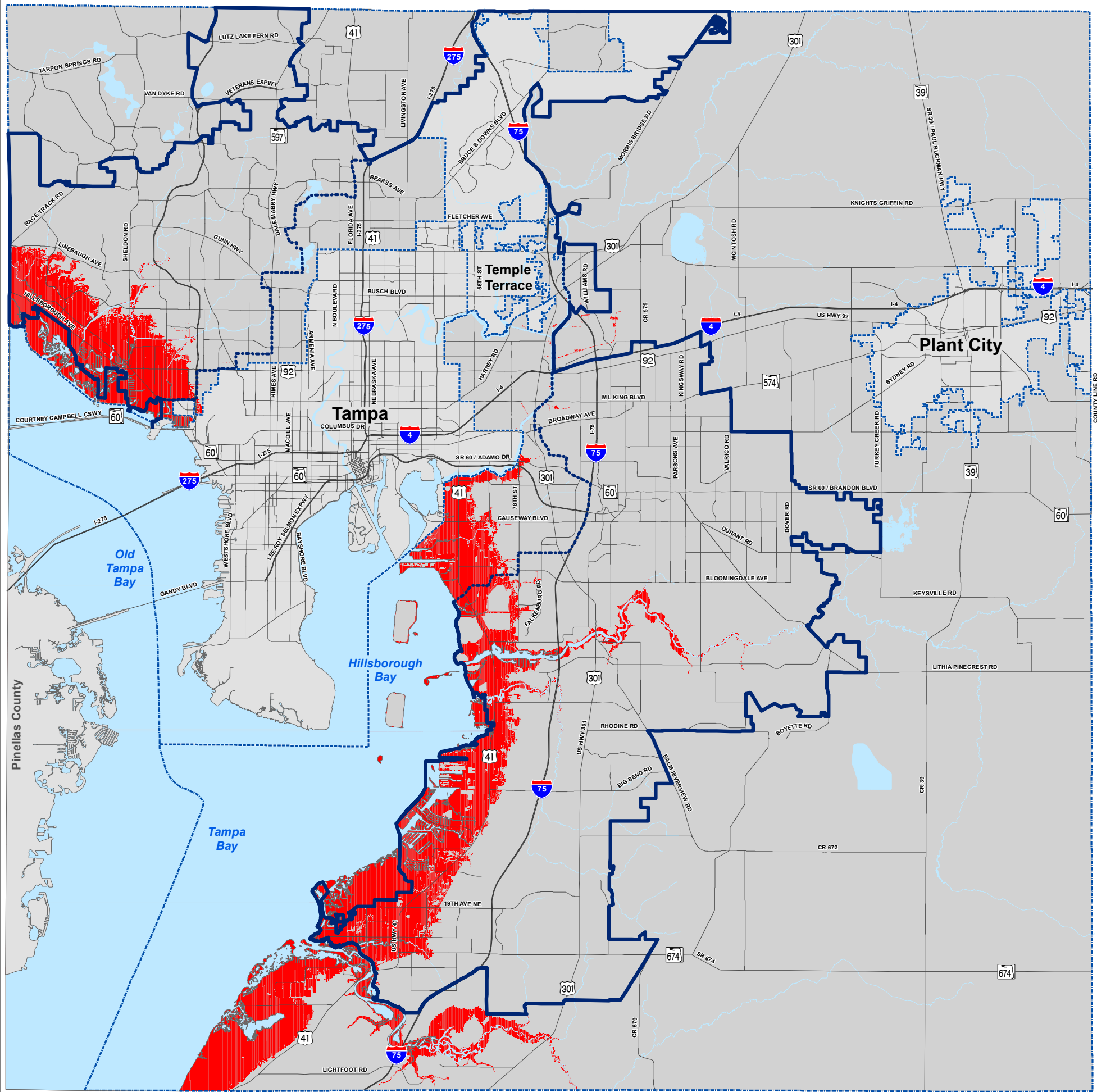


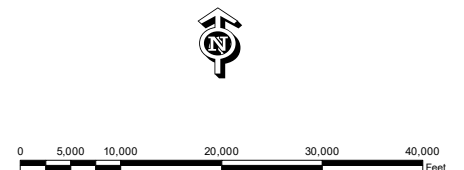
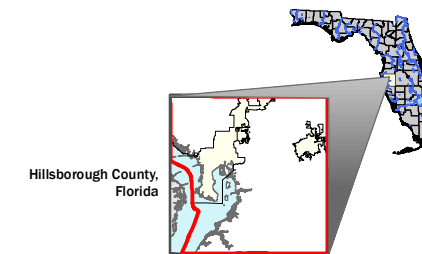
# Unincorporated Hillsborough County COASTAL HIGH HAZARD AREA (2021) ADOPTED FUTURE LAND USE MAP SERIES



### Legend

- Coastal High Hazard Area (2021)
- Roads and Boundary Lines**
- County Boundary
- Jurisdiction Boundary
- Tampa Service Area
- Urban Service Area
- Existing Major Road Network
- Limited Access Roads

### Location Diagram and Reference Information



**DATA SOURCES AND LIMITATIONS:**  
 COASTAL HIGH HAZARD AREA (2016): Tampa Bay Regional Planning Council.  
 MAJOR ROADS: See Adopted MPO Long Range Transportation Plan for specific improvements.  
 REPRODUCTION: This sheet may not be reproduced in part or full for sale to anyone without specific approval of the Hillsborough County City-County Planning Commission.  
 ACCURACY: It is intended that the accuracy of the base map comply with U.S. national map accuracy standards. However, such accuracy is not guaranteed by the Hillsborough County City-County Planning Commission. This map is for illustrative purposes only for the cities of Tampa, Temple Terrace and Plant City.

Author:  
 Date: 4/7/2021  
 Path: G:\gisroot\Projects\Cathy\Arcmap\NEW\_MXD\CompPlanUpdate\_2020\Care\_2020\uhc\_2021\_chh\_2020.mxd



For more information about our organization visit website: [www.planhillsborough.org](http://www.planhillsborough.org)