

HILLSBOROUGH COUNTY, FLORIDA
ADOPTED 2025 FUTURE LAND USE
UNINCORPORATED COUNTY-WIDE
 EFFECTIVE: JUNE 24, 2022
 ORIGINALLY ADOPTED: JUNE 8, 2008



LEGEND

UNINCORPORATED HILLSBOROUGH COUNTY

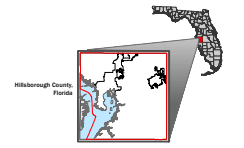
- AGRICULTURAL / RANGING - 100
- AGRICULTURAL - 110
- AGRICULTURAL / RURAL - 15
- PLANNED ENVIRONMENTAL COMMUNITY - 12
- AGRICULTURAL ESTATE - 12.5
- RESIDENTIAL - 1
- RESIDENTIAL - 2
- RESIDENTIAL PLANNED - 2
- RESIDENTIAL - 4
- RESIDENTIAL - 6
- RESIDENTIAL - 9
- RESIDENTIAL - 12
- RESIDENTIAL - 18
- RESIDENTIAL - 20
- RESIDENTIAL - 35
- NEIGHBORHOOD MIXED USE - 40
- SUBURBAN MIXED USE - 6
- COMMUNITY MIXED USE - 12
- URBAN MIXED USE - 20
- REGIONAL MIXED USE - 35
- INNOVATION CORRIDOR MIXED USE - 35
- OFFICE COMMERCIAL - 20
- RESEARCH CORPORATE PARK
- ENERGY INDUSTRIAL PLANNED
- LIGHT INDUSTRIAL PLANNED
- LIGHT INDUSTRIAL
- HEAVY INDUSTRIAL
- PUBLIC / QUASI-PUBLIC
- WIMAUHA VILLAGE RESIDENTIAL - 2
- NATURAL PRESERVE VILLAGE
- CITRUS PARK VILLAGE (See Citrus Park Village Plan - Sub-Area Map)
- TRANSITIONAL AREA (Due to contraction of municipal city limits)

Detailed land use category descriptions can be found in the Future Land Use section of the Comprehensive Plan.

WATER AND ENVIRONMENTALLY SENSITIVE AREAS

- WATER
- SIGNIFICANT WILDLIFE HABITAT
- MAJOR WETLANDS
- ROADS AND BOUNDARY LINES
- COCKROACH BAY AQUATIC PRESERVE BOUNDARY
- COUNTY BOUNDARY
- JURISDICTION BOUNDARY
- URBAN SERVICE AREA
- TPA SERVICE AREA
- EXISTING MAJOR ROAD NETWORK
- LIMITED ACCESS ROADS
- PLANNING AREA BOUNDARY
- COASTAL HIGH RICHED AREA BOUNDARY
- RIGHT-OF-WAY OR OTHERWISE NOT CLASSIFIED

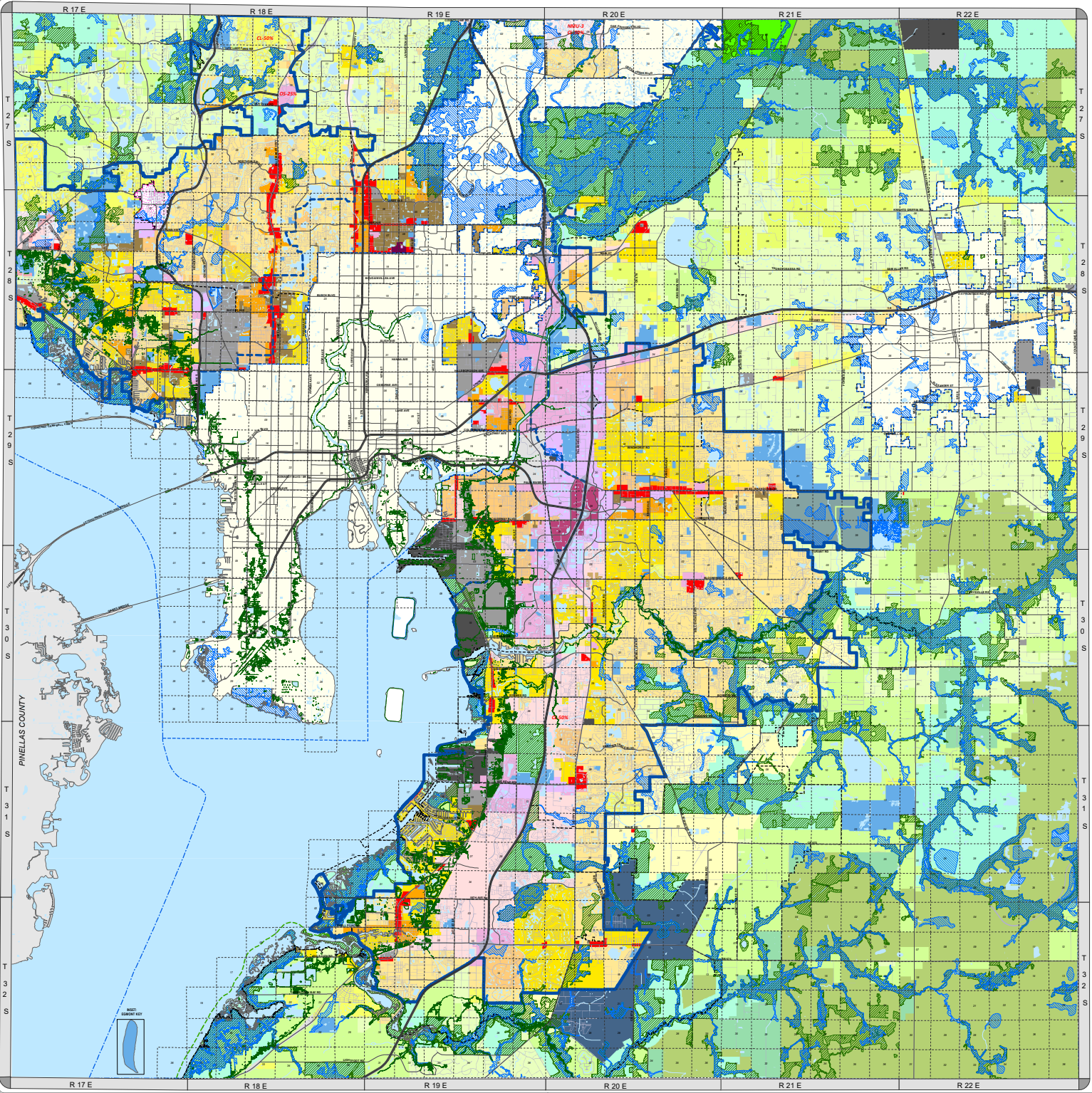
LOCATOR MAP AND REFERENCE INFORMATION



2025 FUTURE LAND USE: Hillsborough County City-County Planning Commission. Originally Adopted - June 08, 2008.
 JURISDICTIONAL AREA: Updated by plan amendments. Effective to present quarterly update.
 URBAN SERVICE AREA BOUNDARIES: Hillsborough County City-County Planning Commission. Effective to present quarterly update.
 SIGNIFICANT WILDLIFE HABITAT: Hillsborough County Geomatics.
 WETLANDS AND WATER: Southwest Florida Water Management District. Wetlands feature over 40 areas extracted from Land Use Land Cover Plan for specific improvements.
 MAJOR ROADS: Metropolitan Planning Group Operations Long Range Transportation Plan. See Adopted MPO Long Range Transportation Plan for specific improvements.
 DATA: Tampa Bay Regional Planning Council, July 28, 2016. The Coastal High RICHED Area as shown on the Future Land Use Map is a general location as per 605.050, which is the area based on the definition of the category 1 wetlands that is established by the S.W. CCR (Southwest Florida Water Management District) and is not subject to the same accuracy standards. However, such accuracy is not guaranteed by the Hillsborough County City-County Planning Commission.
 DISCRETIONARY: This sheet may not be reproduced or used in any way without specific approval of the Hillsborough County City-County Planning Commission.



Author: CATANNAC
 Date: 6/24/2022



R 17 E R 18 E R 19 E R 20 E R 21 E R 22 E

R 17 E R 18 E R 19 E R 20 E R 21 E R 22 E

T 27 S
T 28 S
T 29 S
T 30 S
T 31 S
T 32 S

T 27 S
T 28 S
T 29 S
T 30 S
T 31 S
T 32 S

