

**Greater Palm River Area Community Plan Update
Community Plan Advisory Committee (CPAC) Meeting**

Emanuel P. Johnson Recreation Center
February 22, 2023 (6:00 pm – 7:30 pm)

A. Welcome (10 minutes)

- Recap of last month's meeting & next steps
- Review tonight's meeting structure and desired outcome
- Questions on the best ways to get the word out and encourage more people to participate.
 - i. Note to emphasize the location of the meeting in case people went to the wrong place.
 - ii. Handed out flyers for people to post in public spaces, also the large signs worked well.

B. Review of Adopted Goals (20-30 minutes)

- Goal 4: Parks and Recreation
 - Want more access for community members
 - Family friendly with a relaxing atmosphere (nowhere to go and just be able to read a book outside)
 - Amenities such as picnic tables, bathrooms, etc
 - Mentioned the park/land that had been purchased by the City of Tampa but is currently locked.
- Goal 7a: Environment and Natural Resources
 - Tree preservation
 - Public access to the canal
 - Concerns with pollution from the phosphate mining nearby
 - Concerns with toxic spillage
- Goal 7b: Historic Preservation
 - Designations for certain neighborhoods

C. Activity (40-50 minutes)

- **Staff discussed how some goals and strategies have already been flagged by staff as needing to be addressed due to outdated language or just as something to think about in the future.**
- Small Group Review of Goal & Strategies
- Report Out & Discussion
 - i. CPAC requested an executive summary of the Palm River status report that was completed by Community and Infrastructure Planning department be sent out. Planning Commission & County Staff will work on this.
 - ii. Also requested to have the powerpoint presentation sent to them, or a link to when the presentation was given to the board so they can include that on their community webpages

D. Closing Announcements (5 minutes)

Planning Commission Contacts

Sofia Garantiva

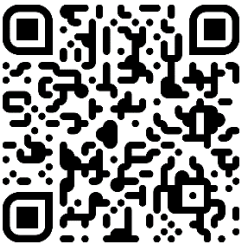
(813) 582-7320 garantivas@plancom.org

Jay Collins

(813) 582-7320 collinsj@plancom.org

Project Website

bit.ly/planpalmlriver



GREATER PALM RIVER AREA COMMUNITY PLAN UPDATE

GOALS AND STRATEGIES EXERCISE #1

△ = CHANGE IDENTIFIED BY STAFF

Environment and Natural Resources

Goal 7a: Protect and enhance the natural environment and resources of the Palm River area.

Strategies

1. Support the restoration and maintenance Palm River/Tampa By-pass Canal and Delany Creek (and its canals and tributaries). Support community initiatives and enforcement of regulations that address:
 - a. Pollution, water quality, bank erosion, drainage systems, stormwater and road runoff
 - b. Community appearance (code enforcement, landscaping, litter, and dumping)
 - c. Access to natural areas (such as right-of-way and easements through Tampa Electric Company, Southwest Florida Water Management District, CSX Railroad, Port of Tampa, and City of Tampa or Hillsborough County)
2. Identify possible public uses and pedestrian access, especially for county-owned property to enhance and expand passive and low-impact access to all Palm River waterfronts and shorelines.
3. Implement the Hillsborough County Greenways Master Plan within the ^{Greater} Palm River area.
4. Support the continued acquisition and restoration of environmental and habitat sensitive land by the County's Environmental Lands Acquisition and Protection Program, the Southwest Florida Water Management District and Florida Communities Trust, and encourage connections of existing and future publicly owned land to form a greenway system.
5. Transfer of development rights are supported to encourage preservation of agricultural, natural and environmental lands

GREATER PALM RIVER AREA COMMUNITY PLAN UPDATE

GOALS AND STRATEGIES EXERCISE #1

STAFF

 = CHANGE IDENTIFIED BY



To ensure adequate freshwater flows to the McKay Bay Estuary:

- a) Support the continued evaluation of shoreline and wetland restoration and rehydration opportunities in the Palm River/McKay Bay Basin.
- b) For its potential to improve water quality conditions in the Palm River system, support the evaluation of the possible removal of a remnant sill beneath the U.S. Highway 41 Bridge that is an artifact of the historic dredging of the Tampa Bypass Canal/Palm River.
- c) Continue refining potential for restoration projects as proposed within the Southwest Florida Water Management District's newly enacted "minimum flow" for the Lower Hillsborough River/Tampa Bypass Canal, including possible scenarios that would support the need for adequate freshwater flows from the Tampa Bypass Canal to the Palm River/McKay Bay system at S-160, just upstream of Adamo Drive.
- d) For improving water quality, support the continuing evaluation, under the state-wide Total Maximum Daily Loads program, and other initiatives, of various stormwater inputs to the Palm River/McKay Bay system.

ENVIRONMENT & NATURAL RESOURCES

- ① Put Protections In Place to prevent spillage from Gypsum stacks, i.e. Piney Point
- ② Put Protections in place to protect communities from spillage from TECO Plant Coal Ash.
- ③ Tree Canopy
- ④ Prohibit further Industrial growth/usage that impact Palm River Canal

GREATER PALM RIVER AREA COMMUNITY PLAN UPDATE

GOALS AND STRATEGIES EXERCISE #1

STAFF

 = CHANGE IDENTIFIED BY

Historic Preservation

Goal 7b: Recognize and protect Palm River's heritage and historic built environment through the identification, evaluation, and designation of the area's significant historic and archaeological resources. Palm River is home to high archaeological probability areas, individual historic buildings and structures, as well as neighborhoods that may be considered eligible for Landmark designation by Hillsborough County or for listing in the National Register of Historic Places. These historic and archaeological resources define the cultural character of Palm River.

Strategies

1. Consider County Landmark designation for significant archaeological sites, buildings and structures, and historic and conservation districts, as defined by the County's Criteria for Landmark Designation. Resources potentially eligible for Landmark designation may include those identified in the County's Historic Resources Inventory and through cultural resource assessment surveys, including the Campoamor Silo and the Suarez Dairy Barn, and also resources that have not yet been documented, such as the Progress Village, Clair Mel, and Adamo Acres neighborhoods.

2. *Develop* ~~Consider~~ partnerships with local colleges and universities to document and survey the history and built environment of the area.



3.

Who?

Pursue grants such as those from the Florida Division of Historical Resources, Preserve America, and The History Channel to survey, preserve, and educate people about Palm River's historic and archaeological resources.



4.

Educate people about the history of Palm River and its neighborhoods through the placement of historic markers, brochures, and partnerships with local schools, museums, and historical societies.

5. Encourage financial incentives for historic preservation including conservation easements on properties containing significant archaeological resources, and historic preservation ad valorem tax exemptions, matching grants, and transfer of development rights for designated Landmarks.

PARKS AND RECREATION

Bathroom Access

Park Access

Places for Families (Picnic, trails, water features)
Benches, gazebo, security

Programs for Outdoor Activities (Kids)

Dog park

Crosswalks > palm River park
Side walks


Identify Greenways in Palm River
* It goes up Maydell but no side walks
traffic is bad!

Add Progress Village to Greenway!

Senior Center + Activities

GREATER PALM RIVER AREA COMMUNITY PLAN UPDATE



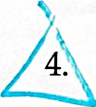


GOALS AND STRATEGIES EXERCISE #1

 = CHANGE IDENTIFIED BY STAFF

Parks and Recreation

Goal 4: Provide adequate and quality parks and recreation opportunities.

Strategies

1.  Locate parks around areas of natural wetlands or upland areas within neighborhoods as new development occurs.
2. Retain corridors for the Hillsborough County Greenways Master Plan within the Palm River area. 
 - a. Intergovernmental cooperation with the City of Tampa is necessary to ensure appropriate access and interface of recreational opportunities.
3. Connections to parks, public lands, waterways, public spaces is desired, encouraged and supported, especially as new development occurs.
4.  Develop public private partnerships. *TO BROAD! WHAT DOES THIS MEAN??*
5.  Support adult and senior programs.
 - a. Progress Village Community Center supports after-school recreation, sports and athletics, as sports and athletics programs are relocated to the Progress Village Sports Complex, adult programs should be enhanced and expanded.
6.  Support the development of a community center.
 - a. Rubin Padgett Sport Complex supports sports and athletics, as sports and athletics programs are relocated to the Progress Village Sports Complex, the site should be retained and developed as a community center.
7. Identify passive uses for ELAPP sites in accordance with the 5 year master plan requirement for the acquisition of such lands.

HISTORIC PRESERVATION

1. Bell Shoals Baptist Church of Palm River aka FBC Palm River
2. Palm River Elementary
3. Clair-mel Elementary
4. Progress Village Community
5. FBC Progress Village
6. Victory A.M.E. = ST. JAMES
7. Progress Village Middle Magnet
8. Markers for Neighborhoods

HISTORICAL AND CULTURAL



LEGEND

- GREATER FALLS RIVER CORRIDOR
- POINTS OF INTEREST**
- FIRE STATION
- HISTORIC RESOURCE
- HOSPITAL
- LIBRARY
- ELEMENTARY SCHOOL
- HIGH SCHOOL
- MIDDLE SCHOOL
- PARK
- CHURCH
- HOME FOR THE AGED
- CEMETERY

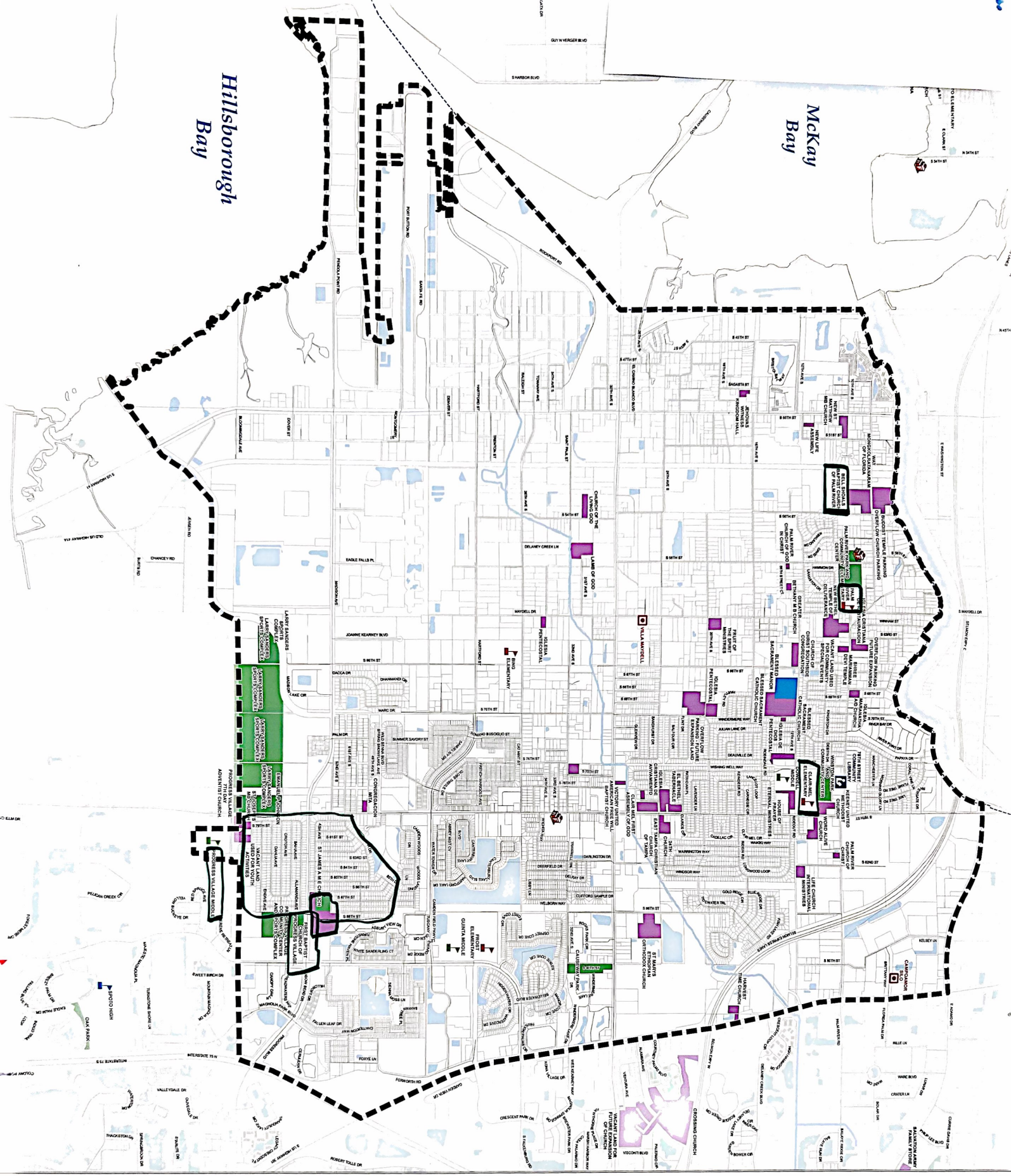
- NATURAL FEATURES**
- WATER

- BOUNDARY LINES**
- JURISDICTION BOUNDARY

LOCATOR MAP AND REFERENCE INF.



WETLANDS: Shaded Areas from Department of Environmental Protection
 PARCEL DATA: Hillsborough County Property Appraiser
 PARKS, SCHOOLS, LIBRARIES: Courtesy: Community Services by the City of Hillsborough
 HISTORIC RESOURCES: Hillsborough County Historic Resources Commission
 JURISDICTIONAL AREAS: Hillsborough County (City/County), Florida, Department of Environmental Protection
 ASSUMPTIONS: It is assumed that the information on this map is current as of the date of publication. The user should verify the information on this map with the appropriate authorities.
 CHANGES: The information on this map is subject to change without notice.



Hillsborough Bay

McKay Bay