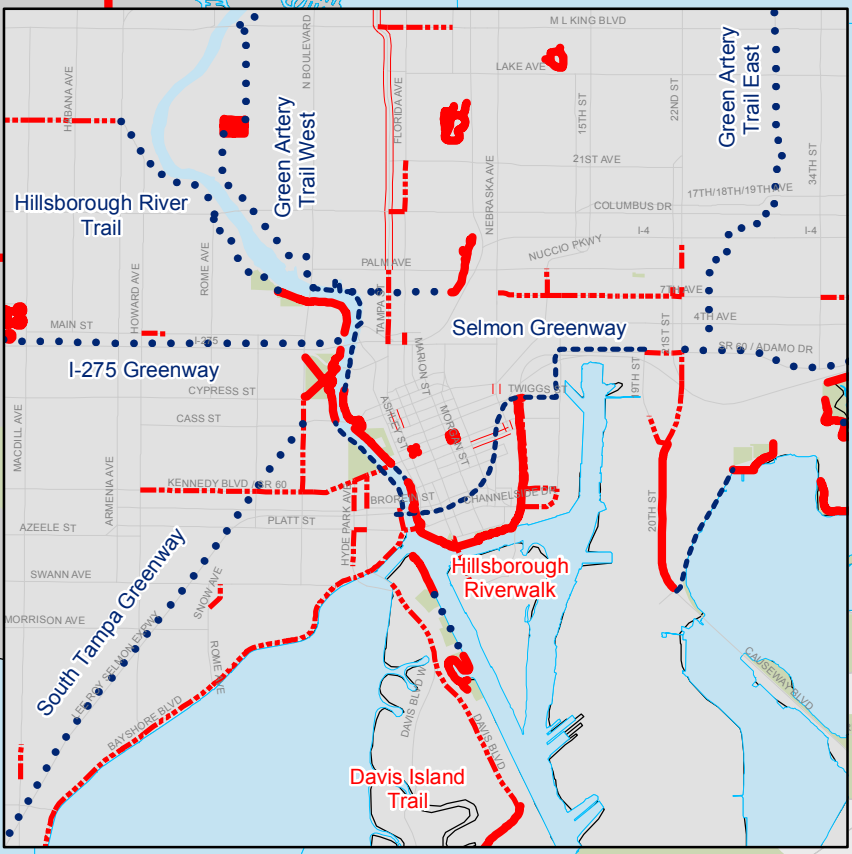


DOWNTOWN INSET



2040 Needs Plan Trails & Sidepaths

Legend

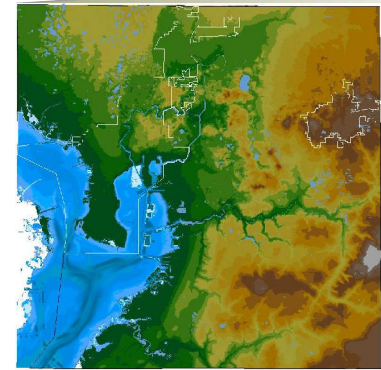
- ** TRAILS**
- Existing
 - Paved Trail
 - Paved & Sidepath
 - Proposed
 - Committed Trail or Sidepath
 - Conceptual Trail or Sidepath
 - Conceptual Sidepath

- ** Bike Lanes**
- Existing

- Widerness / Preserves
- Parks

- Water and Bay
- Streams/Rivers
- County Boundary
- Major Roads
- Airports
- Airfields
- Trail Head / Parking
- Proposed Parking
- Canoe Launch and Boat Ramp
- Transfer Centers
- Hospitals

**Hillsborough County
Florida**



DATA SOURCES: Basemap, roads, water from Hillsborough County City-County Planning Commission. Parcel Lines and data from Hillsborough County Property Appraiser. Wetlands from SWFWMD. Significant Wildlife Habitat from Planning and Development Management, based on satellite imagery. Only wetlands greater than 40 acres depicted.

REPRODUCTION: This sheet may not be reproduced in part or full for sale to anyone without specific approval of the Hillsborough County City-County Planning Commission.

ACCURACY: It is intended that the accuracy of the basemap comply with U.S. National Map accuracy standards. However, such accuracy is not guaranteed by the Hillsborough County City-County Planning Commission. This map for illustrative purposes only. For the most current data and information, see the appropriate source.

File Location: G:\gisroot\projects\mpo\2040 LRTP\11x17 2014 Trails Vision Map Needs Plan.mxd
 Author: Roger W. Mathie - GIS Analyst
 Date: August 11, 2014