

# JOB ACCESS STUDY

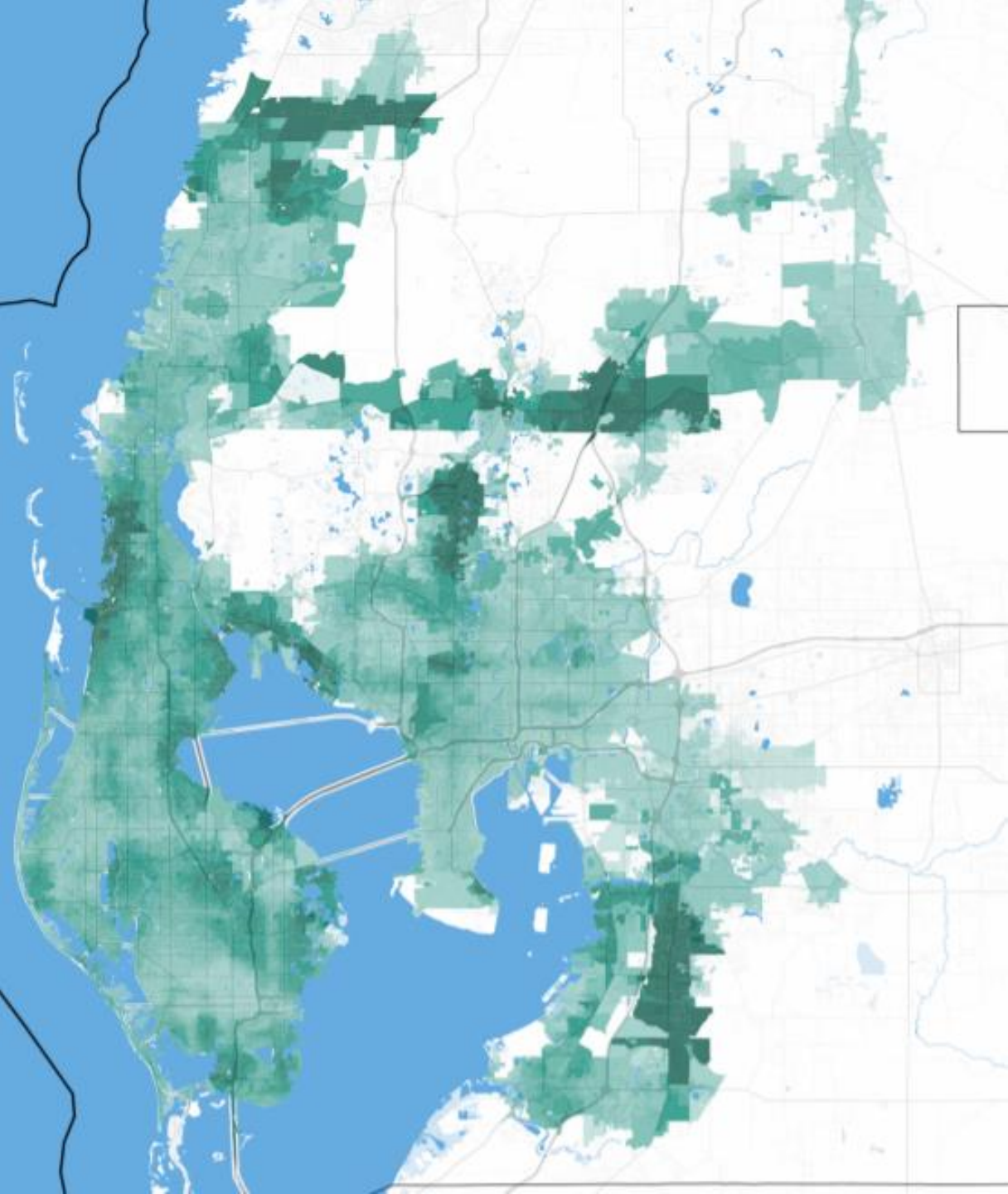
DAVE SOBUSH | DIRECTOR, POLICY & RESEARCH  
TAMPA BAY PARTNERSHIP

# OVERVIEW

- Builds upon 2011 Brookings report *“Missed Opportunity: Transit and Jobs in Metropolitan America”*
- Unique in that it models job access change from a system investment perspective
- Primary unit of analysis is 60-minute transit commute
- Inputs taken from published agency plans, modeled by UMN Accessibility Observatory
- Scenarios are additive, with maps showing aggregate job access change

# SCENARIO COMPARISON

	Improved Local Bus Service	SunRunner/Streetcar Modernization/FL Ave BRT	RRT	Additional Premium Transit Services (Rail, BRT) and Express Bus.
Scenario A	*			
Scenario B	*	*		
Scenario C	*	*	*	
Scenario D	*	*	*	*



## SCENARIO A: LOCAL BUS

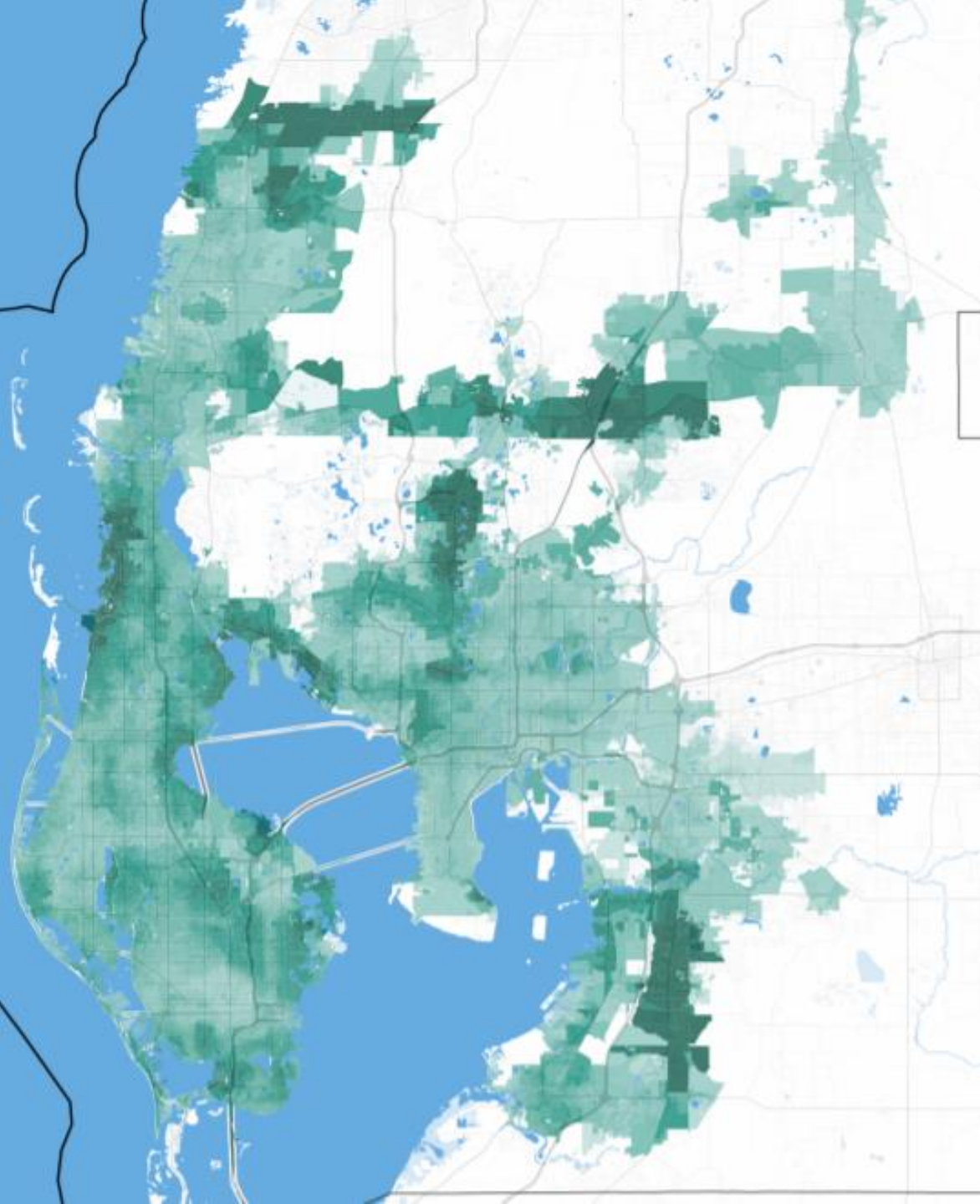
- Typical MSA Resident: **+26,006 jobs**
- **29.0%** Job Access Increase
- **9.2%** of all Jobs Accessible (base=7.2%)

*(Note: 1.2M Jobs in MSA)*

Tampa: +42.7K / +19.4% / 20.9% of Jobs

Hillsborough: +20.7K / +21.6% / 9.3% of Jobs



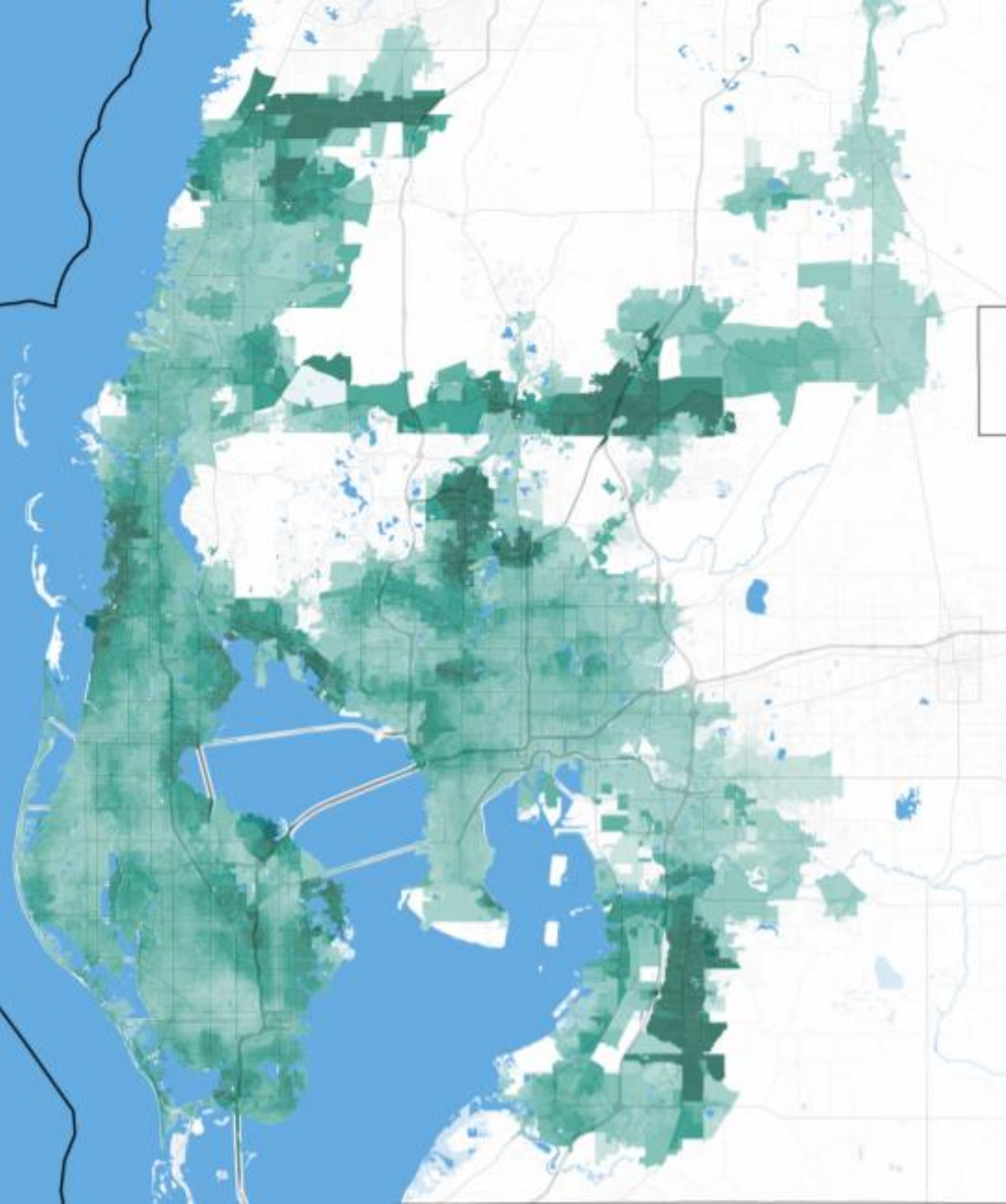


## SCENARIO B: ADDING LOCAL PREMIUM

- Typical MSA Resident: **+27,270 jobs**
- **30.4%** Job Access Increase
- **9.3%** of all Jobs Accessible (base=7.2%)

Tampa: +45.2K / +20.6% / 21.1% of Jobs

Hillsborough: +22.3K / +23.2% / 9.4% of Jobs



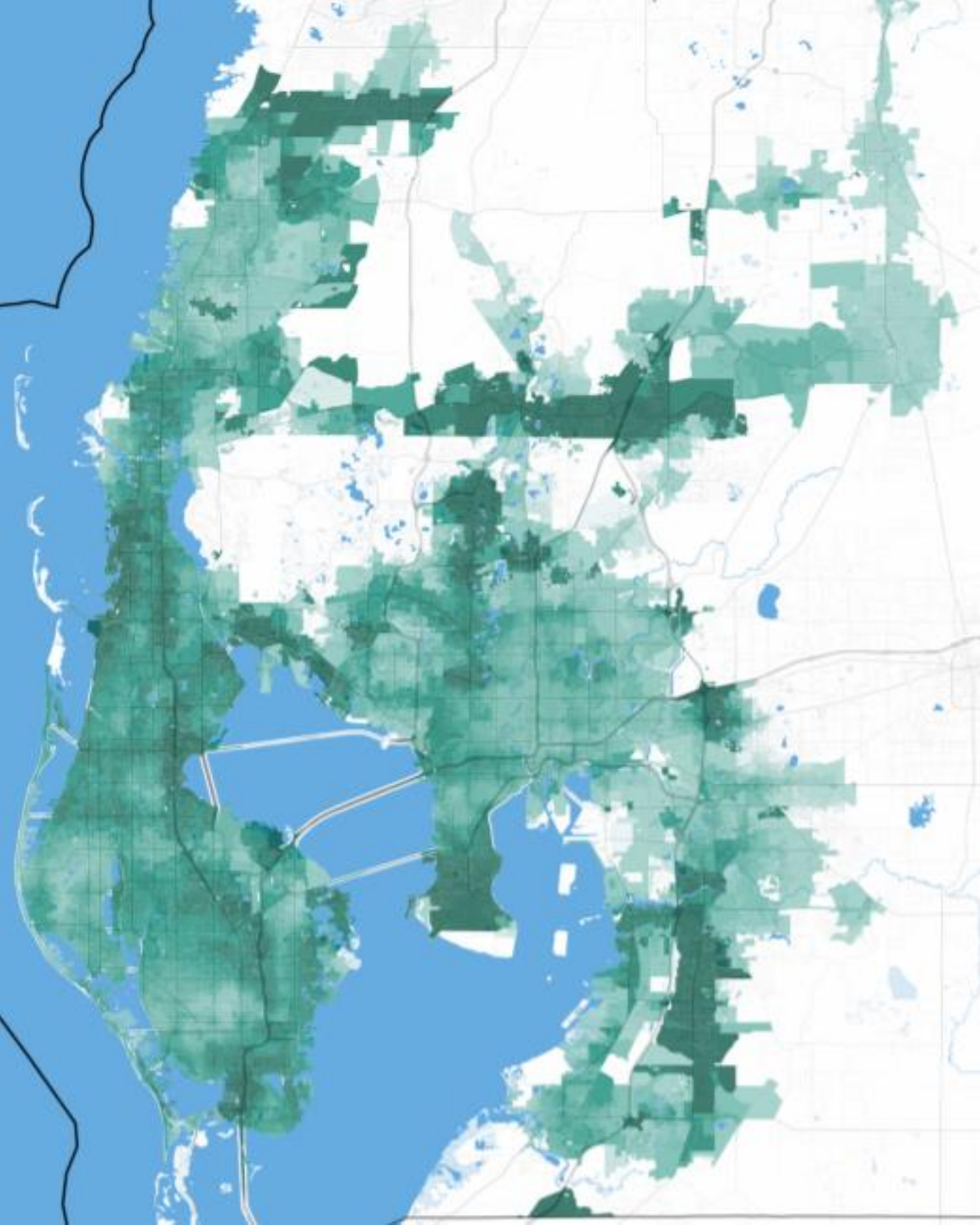
## SCENARIO C: ADDING REGIONAL RAPID TRANSIT

- Typical MSA Resident: **+31,582 jobs**
- **35.2%** Job Access Increase
- **9.7%** of all Jobs Accessible (base=7.2%)

Tampa: +59.7K / +27.2% / 22.3% of Jobs

Hillsborough: +28.6K / +29.6% / 9.9% of Jobs



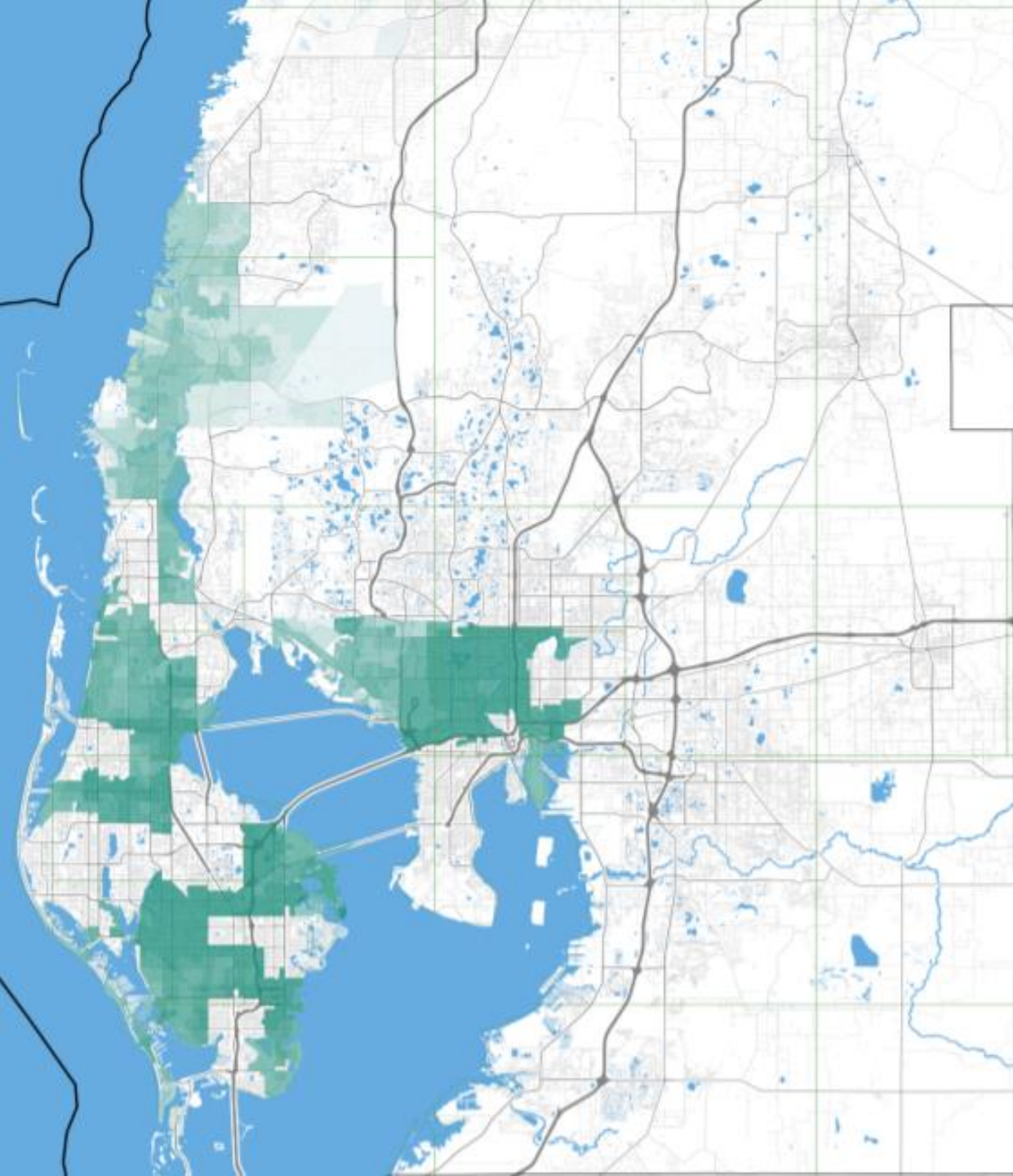


## SCENARIO D: ENVISION 2030

- Typical MSA Resident: **+52,035 jobs**
- **57.9%** Job Access Increase
- **11.3%** of all Jobs Accessible (base=7.2%)
- 116K workers able to access **+150K** more jobs

Tampa: +101.6K / +46.3% / 25.6% of Jobs

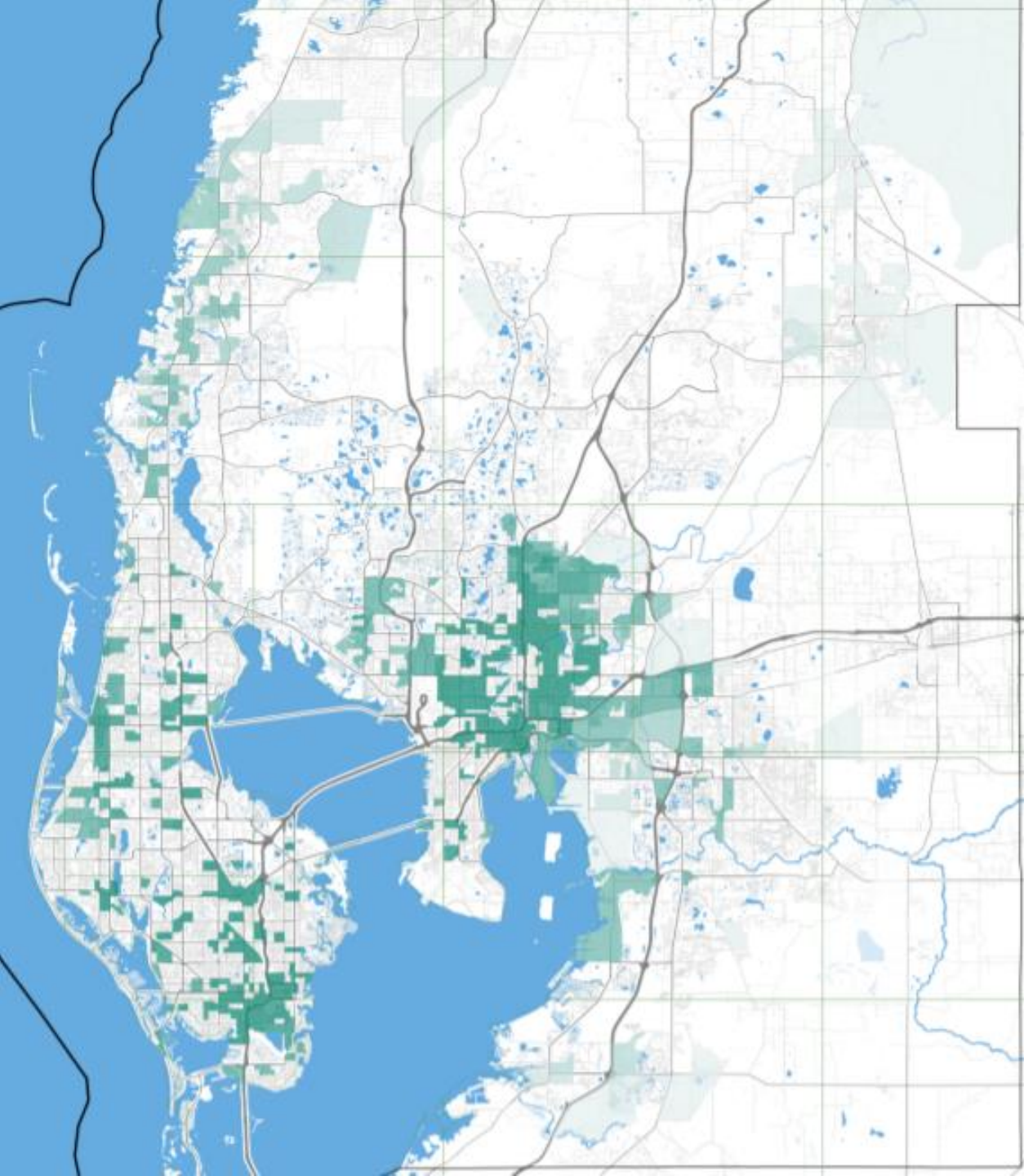
Hillsborough: +45.6K / +47.6% / 11.3% of Jobs



# JOB ACCESS: COVID-AFFECTED

- ZIP codes where 5% or more of workforce filed, as of April 4, an initial claim for Re-employment Assistance
- 41 of 139 ZIP codes (29.5%) met this criteria
- Home to 414,617 Workers
- Typical Resident: **+76,374 jobs**
- **55.7%** Job Access Increase
- **17.0%** of all Jobs Accessible (10.9%)





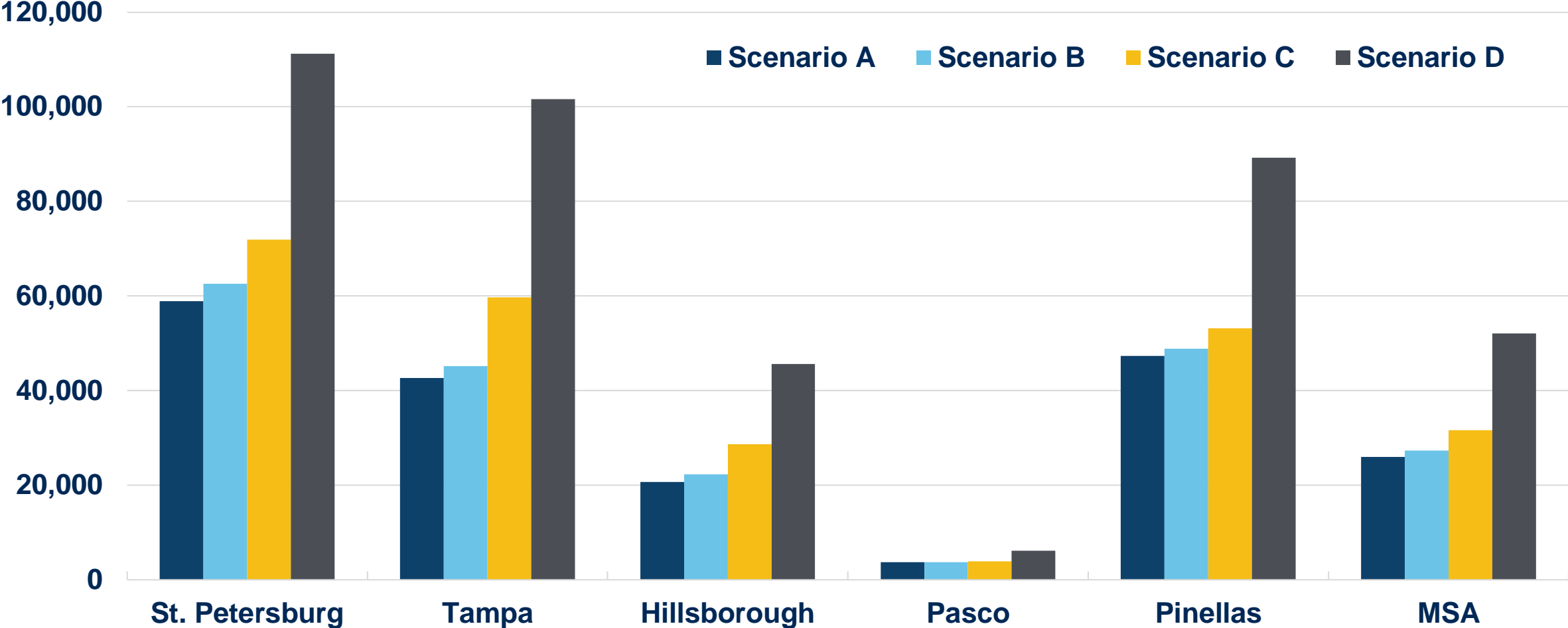
# JOB ACCESS: HIGH POVERTY/ FEW VEHICLES

- Block groups with Poverty Rate >20%, or...
- Block groups with >20% no vehicle or >75% one vehicle
- 580 of 2,004 block groups (28.9%) met this criteria
- Home to 290,111 Workers
- Typical Resident: **+74,403 jobs**
- **52.0%** Job Access Increase
- **17.3%** of all Jobs Accessible (11.4%)

# SCENARIO COMPARISON

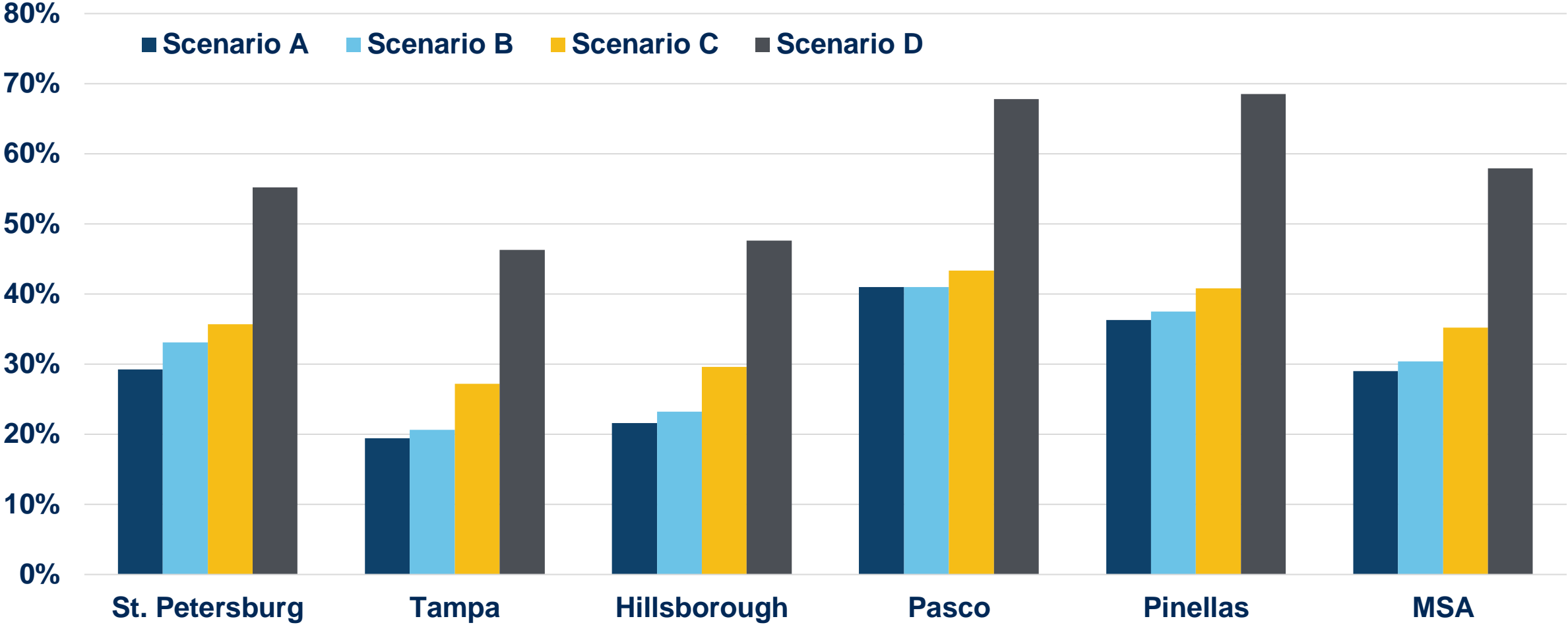
	Improved Local Bus Service	SunRunner/Streetcar Modernization/FL Ave BRT	RRT	Additional Premium Transit Services (Rail, BRT) and Express Bus.	60- Minute Job Access Change (#)	60- Minute Job Access Change (%)	Share of MSA Jobs Accessible (60-Min)
<i>Baseline</i>					0	0%	7.2%
Scenario A	*				26,006	29.0%	9.2%
Scenario B	*	*			27,270	30.4%	9.3%
Scenario C	*	*	*		31,582	35.2%	9.7%
Scenario D	*	*	*	*	52,035	57.9%	11.3%

# SCENARIO COMPARISON: NUMERIC CHANGE



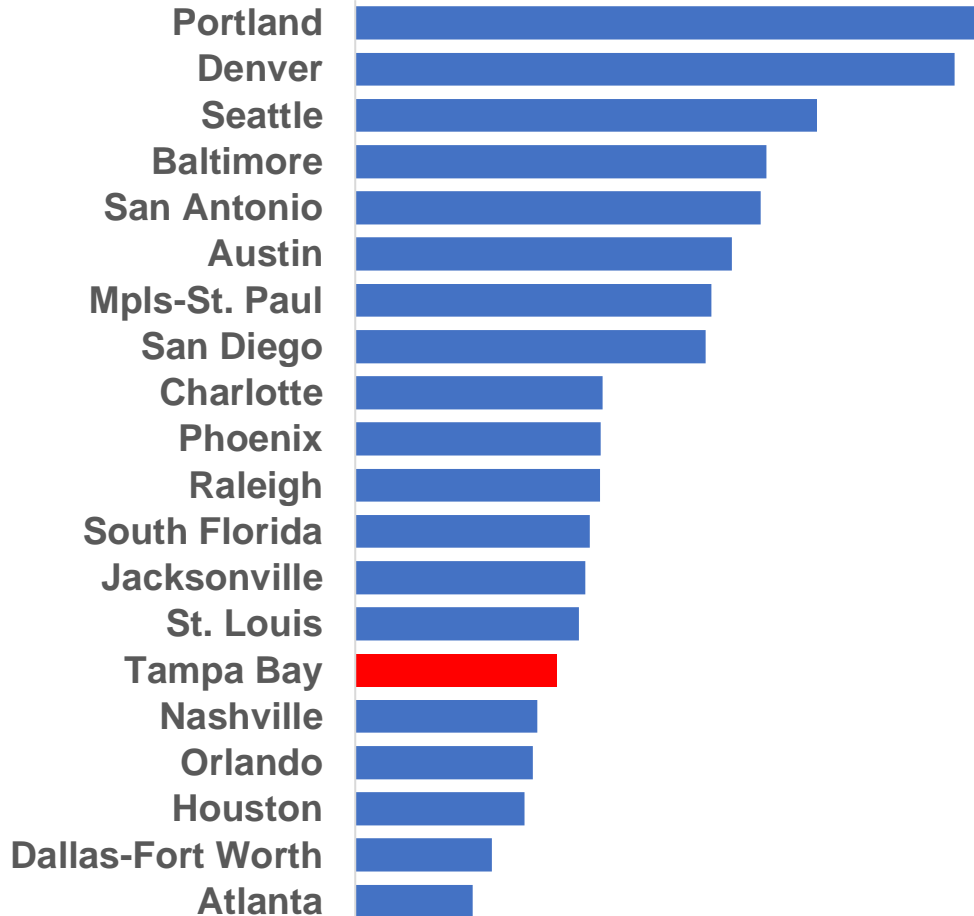


# SCENARIO COMPARISON: PERCENTAGE CHANGE

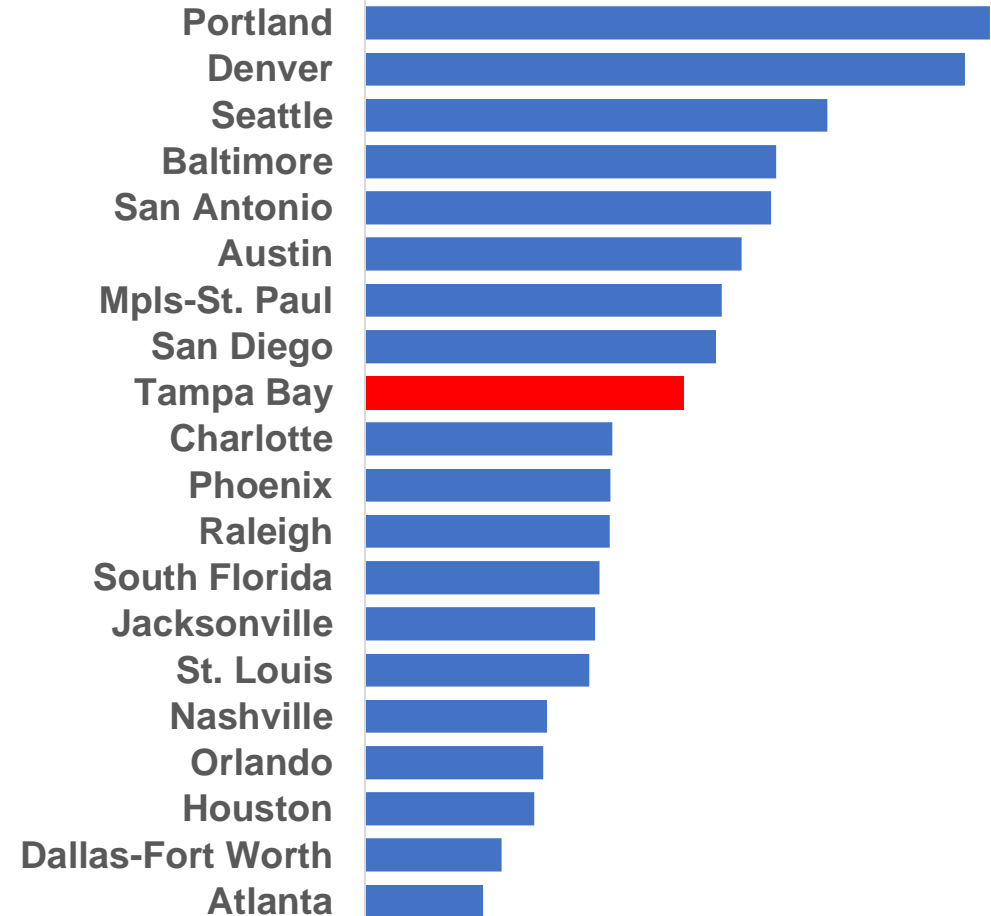


# ACCESSIBILITY OBSERVATORY RANKINGS

## CURRENT STATE



## FUTURE STATE



# KEY TAKEAWAYS: RESEARCH

- **Job Access** is an additional goal and analysis tool for transit planning.
- **Local bus service** along arterial roads provides the greatest impact and increases job access by **29% (+26K jobs)** for the typical Tampa Bay worker.
- **Regional Rapid Transit** has a larger impact on job access than planned premium service projects that serve a single county.
- The **Envision 2030** scenario increases the number of jobs accessible to the average Tampa Bay worker by **57.9%**, putting nearly **58,000** additional jobs within a 60-minute commute.
- Implementing Envision 2030 catapults Tampa Bay from **15<sup>th</sup> to 9<sup>th</sup>** in job access, ahead of RCR markets Charlotte, Phoenix, and Raleigh. Among the 49 largest MSAs in the United States, Tampa Bay would jump from **41<sup>st</sup> to 27<sup>th</sup>** in job access.



THANK YOU

DAVE SOBUSH | DIRECTOR, POLICY & RESEARCH  
TAMPA BAY PARTNERSHIP