

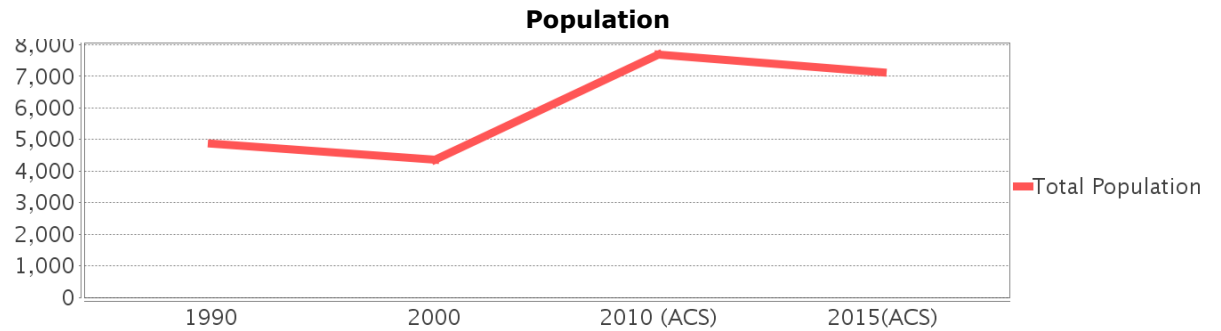
# Sociocultural Data Report

## Wimauma

**Area:** 25.419 square miles  
**Jurisdiction(s):** Cities: NA  
 Counties: Manatee, Hillsborough

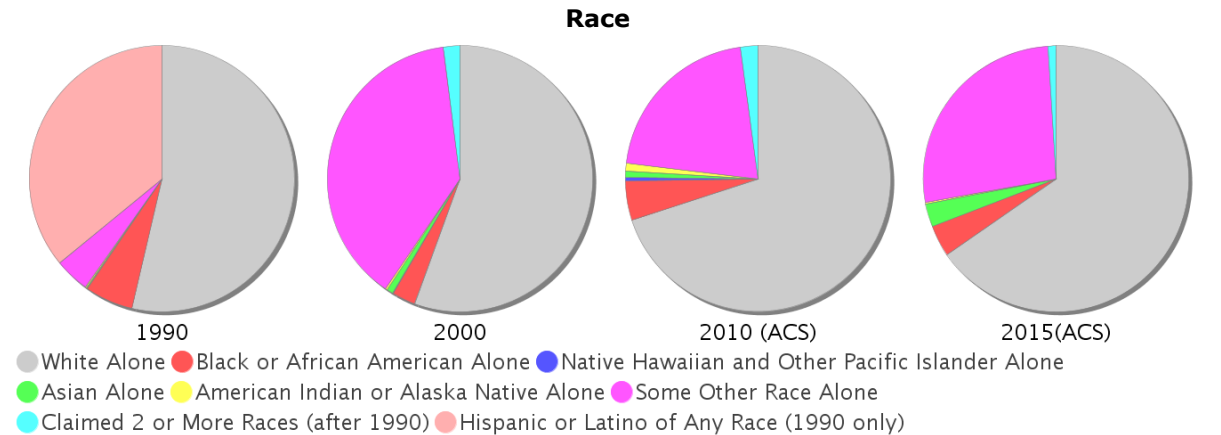
## General Population Trends

Description	1990	2000	2010 (ACS)	2015(ACS)
Total Population	4,857	4,346	7,678	7,119
Total Households	1,109	1,024	1,811	1,926
Average Persons per Acre	0.74	0.37	0.84	0.85
Average Persons per Household	3.17	3.00	3.22	2.97
Average Persons per Family	3.35	3.45	3.22	3.50
Males	2,683	2,366	4,125	3,684
Females	2,174	1,981	3,553	3,435

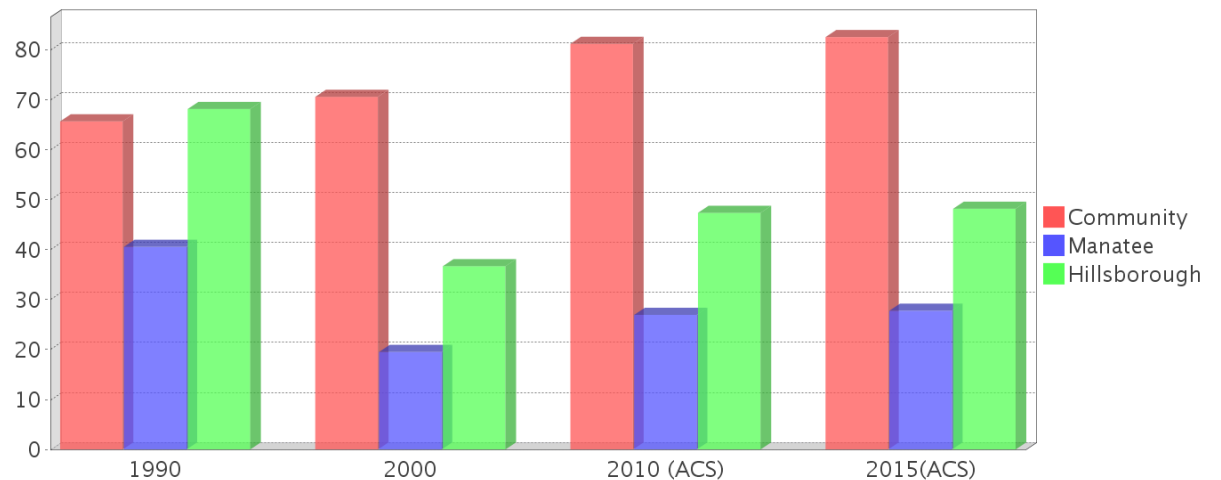


## Race and Ethnicity Trends

Description	1990	2000	2010 (ACS)	2015(ACS)
White Alone	4,065 (83.69%)	2,416 (55.59%)	5,369 (69.93%)	4,651 (65.33%)
Black or African American Alone	451 (9.29%)	123 (2.83%)	370 (4.82%)	270 (3.79%)
Native Hawaiian and Other Pacific Islander Alone	0 (0.00%)	2 (0.05%)	31 (0.40%)	0 (0.00%)
Asian Alone	8 (0.16%)	34 (0.78%)	62 (0.81%)	202 (2.84%)
American Indian or Alaska Native Alone	11 (0.23%)	9 (0.21%)	71 (0.92%)	10 (0.14%)
Some Other Race Alone	322 (6.63%)	1,676 (38.56%)	1,612 (21.00%)	1,914 (26.89%)
Claimed 2 or More Races	NA (NA)	86 (1.98%)	163 (2.12%)	71 (1.00%)
Hispanic or Latino of Any Race	2,724 (56.08%)	2,891 (66.52%)	5,756 (74.97%)	5,357 (75.25%)
Not Hispanic or Latino	2,133 (43.92%)	1,455 (33.48%)	1,922 (25.03%)	1,762 (24.75%)
Minority	3,191 (65.70%)	3,069 (70.62%)	6,237 (81.23%)	5,879 (82.58%)



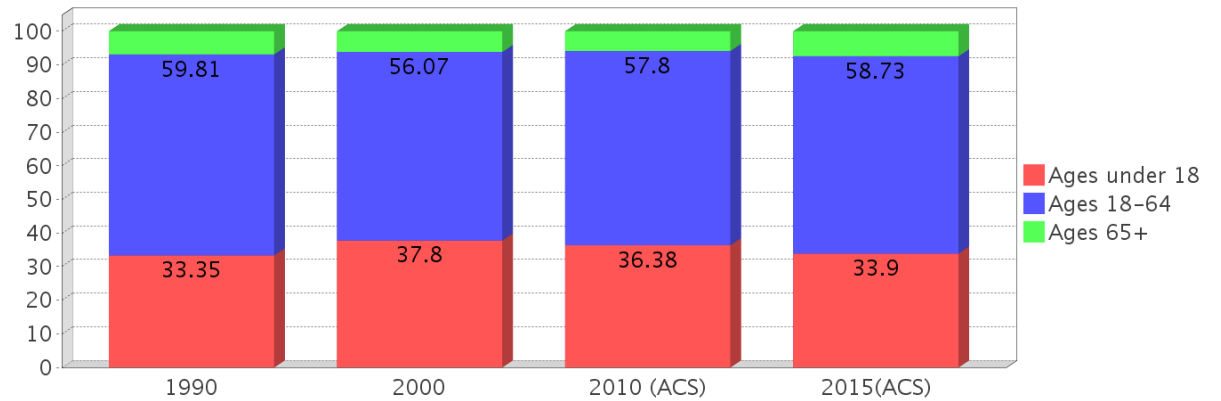
## Minority Percentage Population



### Age Trends

Description	1990	2000	2010 (ACS)	2015(ACS)
Under Age 5	9.24%	10.31%	11.79%	9.75%
Ages 5-17	24.11%	27.50%	24.59%	24.15%
Ages 18-21	9.96%	7.27%	7.61%	5.31%
Ages 22-29	15.73%	13.71%	14.87%	13.02%
Ages 30-39	14.47%	12.95%	13.95%	15.89%
Ages 40-49	10.23%	11.57%	10.65%	9.69%
Ages 50-64	9.41%	10.56%	10.72%	14.82%
Age 65 and Over	6.86%	6.14%	5.82%	7.37%
-Ages 65-74	4.57%	4.07%	3.46%	5.06%
-Ages 75-84	1.87%	1.56%	1.80%	2.05%
-Age 85 and Over	0.41%	0.51%	0.55%	0.27%
Median Age	NA	32	37	40

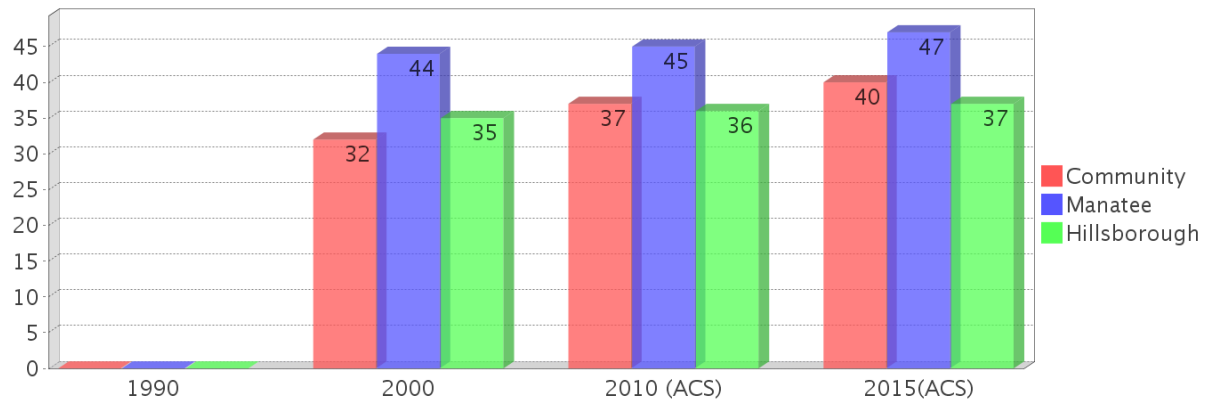
### Population by Age Group



### Income Trends

Description	1990	2000	2010 (ACS)	2015(ACS)
Median Household Income	\$21,969	\$44,192	\$50,673	\$49,293
Median Family Income	\$24,844	\$48,736	\$56,630	NA
Population below Poverty Level	42.00%	30.76%	20.10%	35.76%
Households below Poverty Level	33.63%	25.68%	23.52%	32.61%
Households with Public Assistance Income	8.48%	5.76%	6.52%	3.84%

### Median Age Comparison

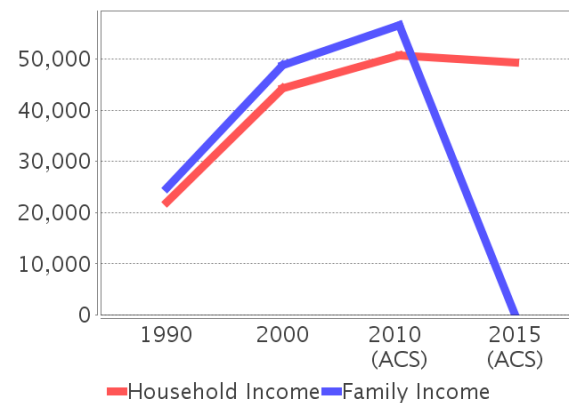


### Disability Trends

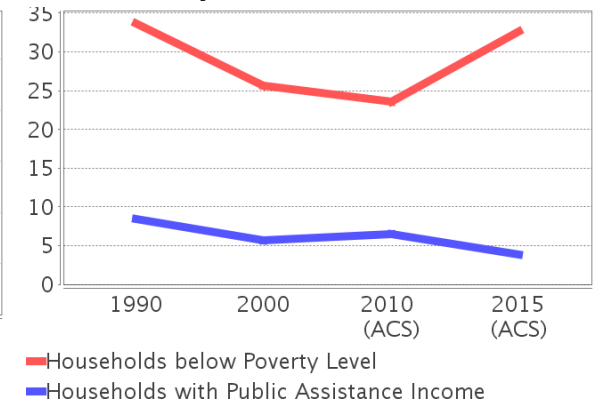
See the Data Sources section below for an explanation about the differences in disability data among the various years.

Description	1990	2000	2010 (ACS)	2015(ACS)
Population 16 To 64 Years with a disability	256 (7.96%)	735 (19.01%)	(NA)	(NA)
Population 20 To 64 Years with a disability	(NA)	(NA)	(NA)	379 (9.58%)

### Income Trends



### Poverty and Public Assistance



## Educational Attainment Trends

Age 25 and Over

Description	1990	2000	2010 (ACS)	2015(ACS)
Less than 9th Grade	968 (41.02%)	700 (32.96%)	930 (33.06%)	1,362 (34.38%)
9th to 12th Grade, No Diploma	593 (25.13%)	500 (23.54%)	518 (18.41%)	738 (18.63%)
High School Graduate or Higher	799 (33.86%)	924 (43.50%)	1,365 (48.52%)	1,863 (47.02%)
Bachelor's Degree or Higher	72 (3.05%)	68 (3.20%)	147 (5.23%)	286 (7.22%)

## Language Trends

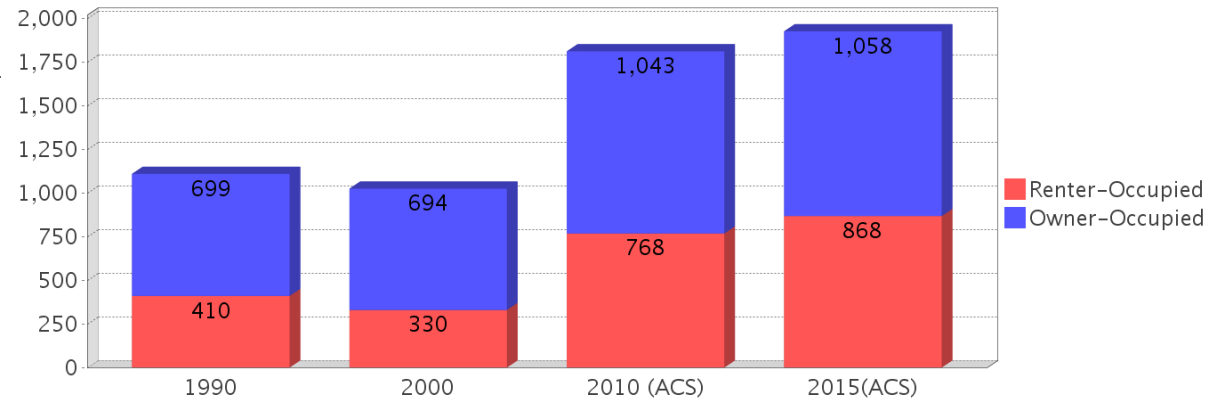
Age 5 and Over

Description	1990	2000	2010 (ACS)	2015(ACS)
Speaks English Well	497 (11.24%)	535 (13.72%)	607 (13.09%)	906 (14.10%)
Speaks English Not Well	NA (NA)	279 (7.16%)	559 (12.06%)	835 (13.00%)
Speaks English Not at All	NA (NA)	374 (9.59%)	296 (6.38%)	379 (5.90%)
Speaks English Not Well or Not at All	817 (18.48%)	653 (16.75%)	855 (18.44%)	1,214 (18.90%)

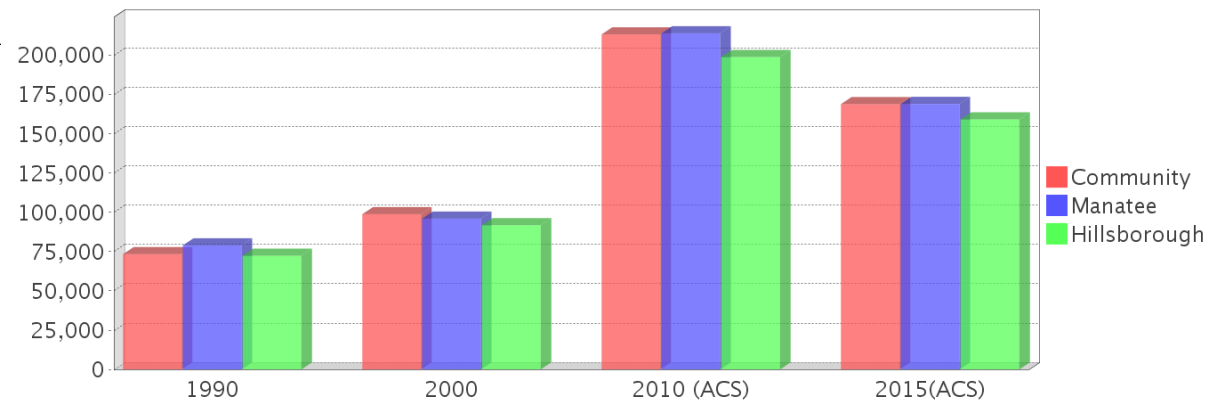
## Housing Trends

Description	1990	2000	2010 (ACS)	2015(ACS)
Total	1,418	1,105	2,069	2,221
Units per Acre	0.08	0.06	0.12	0.12
Single-Family Units	402	398	800	818
Multi-Family Units	66	50	250	308
Mobile Home Units	631	657	921	1,093
Owner-Occupied Units	699	694	1,043	1,058
Renter-Occupied Units	410	330	768	868
Vacant Units	309	81	258	294
Median Housing Value	\$73,400	\$98,850	\$213,300	\$168,900
Occupied Housing Units w/No Vehicle	125 (11.27%)	90 (8.79%)	81 (4.47%)	109 (5.66%)

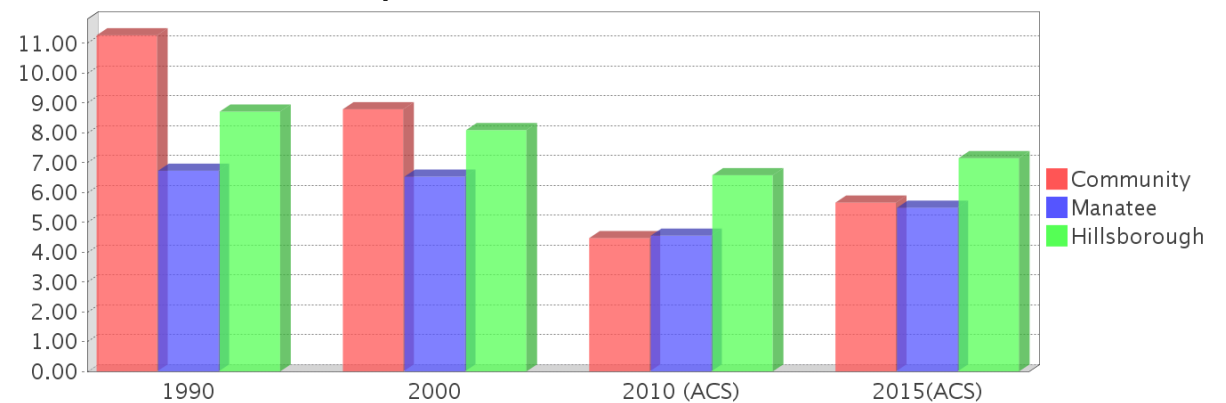
## Housing Tenure



## Median Housing Value Comparison

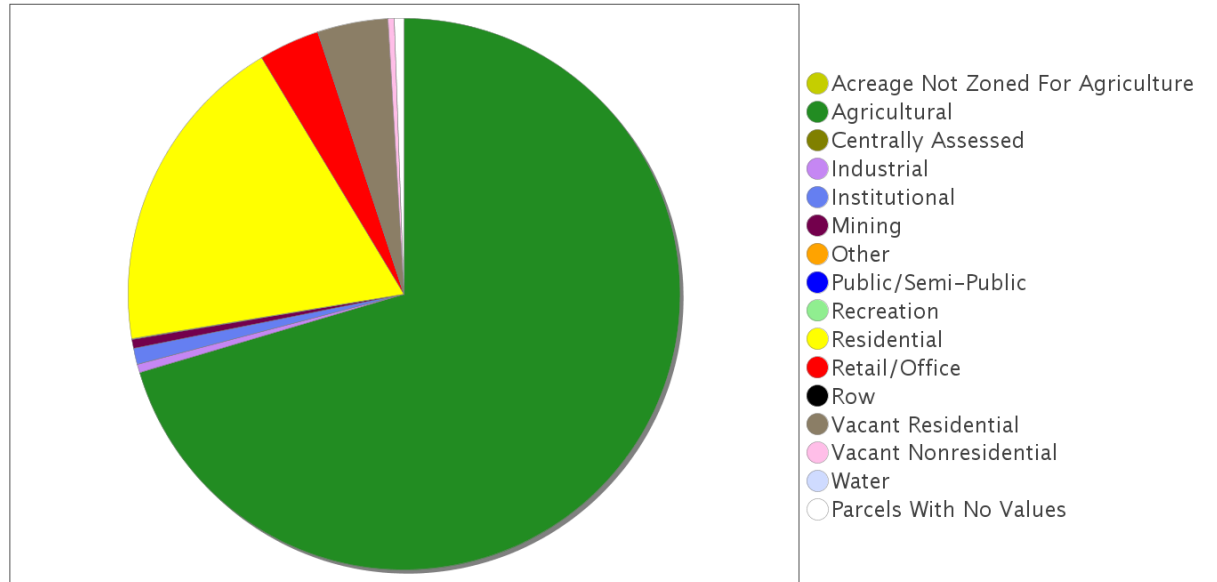


## Occupied Units With No Vehicles Available

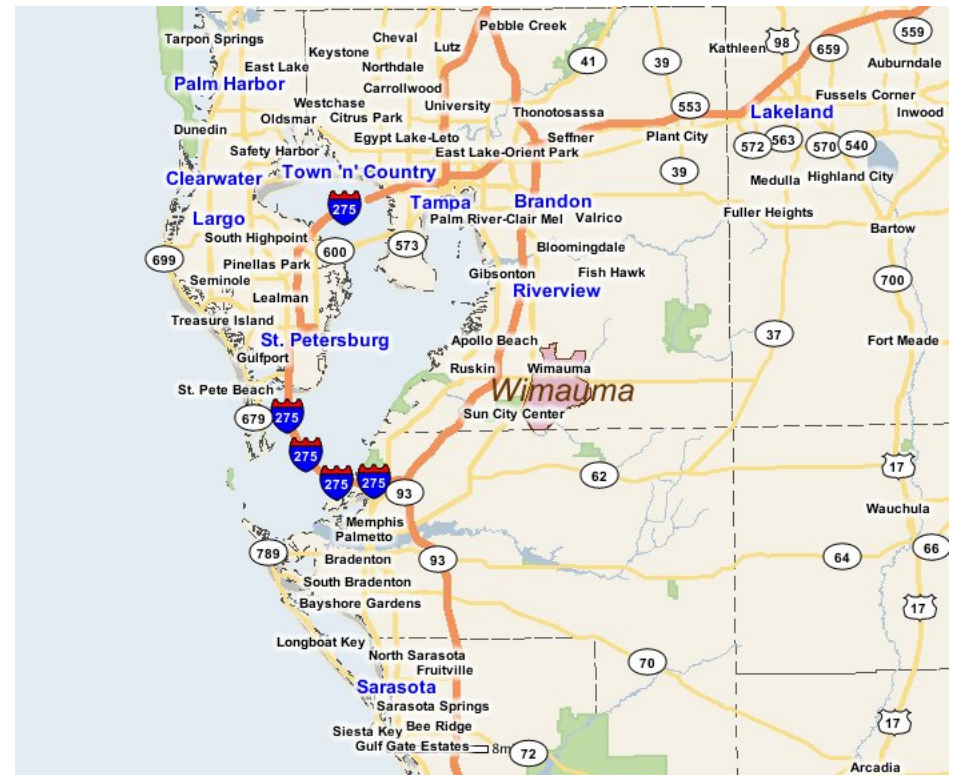
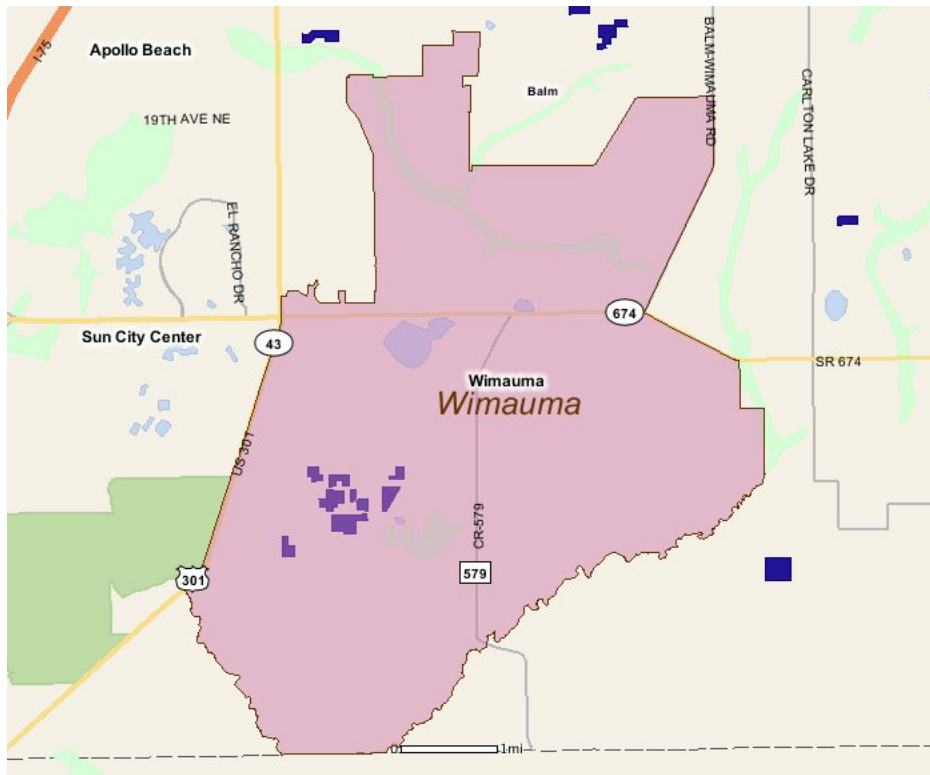


## Existing Land Use

Land Use Type	Acres	Percentage
Acreage Not Zoned For Agriculture	<0.5	<0.00%
Agricultural	6,986	42.94%
Centrally Assessed	0	0.00%
Industrial	51	0.31%
Institutional	93	0.57%
Mining	53	0.33%
Other	<0.5	<0.00%
Public/Semi-Public	1	0.01%
Recreation	1	0.01%
Residential	1,882	11.57%
Retail/Office	354	2.18%
Row	1	0.01%
Vacant Residential	408	2.51%
Vacant Nonresidential	38	0.23%
Water	0	0.00%
Parcels With No Values	55	0.34%



## Location Maps



## Community Facilities

The community facilities information below is useful in a variety of ways for environmental evaluations. These community resources should be evaluated for potential sociocultural effects, such as accessibility and relocation potential. The facility types may indicate the types of population groups present in the project study area. Facility staff and leaders can be sources of community information such as who uses the facility and how it is used. Additionally, community facilities are potential public meeting venues.

### Assisted Housing (Points)

Facility Name	Address	Zip Code
GROVES AT WIMAUMA	5316 SUN PARADISE CT.	33598
NEWMAUMA HOMES II	5701 BASSA ST	33598
NEWMAUMA HOMES PHASE I	5701 BASSA ST	33598
NEWMAUMA HOMES III	5701 BASSA ST	33598
LA ESTANCIA	5292 GUADALOUPE BOULEVARD	33598

### Community Boundaries (User defined)

Facility Name
Sun City Center
SouthShore
Balm
Little Manatee South
Wimauma

### Community Centers (Points)

Facility Name	Address	Zip Code
WIMAUMA SENIOR CENTER	5714 N ST	33598

### Correctional Facilities (Points)

Facility Name	Address	Zip Code
YOUTH ENVIRONMENTAL SERVICES	4337 SAFFOLD RD	33598

### Fire Stations (Points)

Facility Name	Address	Zip Code
WIMAUMA FIRE DEPARTMENT STATION 22	1120 7TH ST	33598

### Florida Parks and Recreational Facilities (Points)

Facility Name	Address	Zip Code
BETHUNE RECREATION CENTER	5809 EDINA ST	33598
WIMAUMA PARK	5705 HILLSBOROUGH ST	33598

### Government Building

Facility Name	Address	Zip Code
U S POST OFFICE - WIMAUMA	5608 STATE ROAD 674	33598

### Healthcare Facilities (Geocoded)

Facility Name	Address	Zip Code
WIMAUMA COMMUNITY HEALTH CENTER	5121 STATE ROAD 674	33598

### Law Enforcement Facilities (Points)

Facility Name	Address	Zip Code
HILLSBOROUGH COUNTY SHERIFF'S OFFICE WIMAUMA COMMUNITY STATION	201 12TH ST	33598

### Public and Private Schools (Points)

Facility Name	Address	Zip Code
WIMAUMA ELEMENTARY SCHOOL	5709 HICKMAN	33598
YOUTH ENVIRONMENTAL SERVICES	4337 SAFFOLD ROAD	33598

## Religious Centers (Points)

Facility Name	Address	Zip Code
WIMAUMA SPANISH SEVENTH DAY	5724 CAMP STREET	33598
TEMPLO FILADELFIA	5730 STATE ROAD 674	33598
IGLESIA DE DIOS ELIM IN WIMAUM	5801 HICKMAN ST	33598
OUR LADY OF GUADALUPE	16650 US HIGHWAY 301 SOUTH	33598
PROSPECT MISSIONARY BAPTIST CHURCH	6012 EDINA ST	33598
CHURCH OF GOD WIMAUMA CONVENTION CENTER	5408 STATE RD 674	33598
MT MORIAH MISSIONARY CHURCH	5910 VEL STREET	33598
CHURCH OF GOD WIMAUMA	5504 STATE ROAD 674	33598
FIRST BAPTIST CHURCH-WIMAUMA	5701 CAMP STREET	33598
SUN CITY CHRISTIAN CENTER	17566 US HIGHWAY 301 SOUTH	33598

## US Census Places

Facility Name
Wimauma
Sun City Center
Balm

---

## Block Groups

The following Census Block Groups were used to calculate demographics for this report.

### 1990 Census Block Groups

120570140017, 120570139025, 120570139024, 120570139022, 120570139026, 120810019013, 120570140013

### 2000 Census Block Groups

120570140063, 120570139063, 120570139072, 120810019052, 120570139064, 120570140064, 120570139071, 120570139062

### 2010 Census Block Groups

120570139072, 120570139132, 120810019141, 120570139142, 120570139141, 120570140151, 120570139071, 120570140161, 120570139131

### 2015 Census Block Groups

120570139072, 120570140161, 120570139142, 120810019141, 120570139071, 120570140151, 120570139132, 120570139141, 120570139131

---

## Data Sources

### Area

The geographic area of the community based on a user-specified community boundary or area of interest (AOI) boundary.

### Jurisdiction

Jurisdiction(s) includes local government boundaries that intersect the community or AOI boundary.

### Demographic Data

Demographic data reported under the headings General Population Trends, Race and Ethnicity Trends, Age Trends, Income Trends, Educational Attainment Trends, Language Trends, and Housing Trends is from the U.S. Decennial Census (1990, 2000) and the American Community Survey (ACS) 5-year estimates from 2006-2010 and 2011-2015. The data was gathered at the block group level for user-specified community boundaries and AOIs, and at the county level for counties. Depending on the dataset, the data represents 100% counts (Census Summary File 1) or sample-based information (Census Summary File 3 or ACS).

### About the Census Data:

User-specified community boundaries and AOIs do not always correspond precisely to block group boundaries. In these instances, adjustment of the geographic area and data for affected block groups is required to estimate the actual population. To improve the accuracy of such estimates in the SDR report, the census block group data was adjusted to exclude all census blocks with a population of two or fewer. These areas were eliminated from the corresponding years' block groups. Next, the portion of the block group that lies outside of the community or AOI boundary was removed. The demographics within each block group were then recalculated, assuming an equal area distribution of the population. Note that there may be areas where there is no population.

Use caution when comparing the 100% count data (Decennial Census) to the sample-based data (ACS). In any given year, about one in 40 or 2.5% of U.S. households will receive the ACS questionnaire. Over any five-year period, about one in eight households will receive the questionnaire, as compared to about one in six that received the long form



questionnaire for the Decennial Census 2000. (Source: <http://mcdc.missouri.edu/pub/data/acs/Readme.shtml>) The U.S. Census Bureau provides help with this process:  
[http://www.census.gov/acs/www/guidance\\_for\\_data\\_users/comparing\\_2015/](http://www.census.gov/acs/www/guidance_for_data_users/comparing_2015/)

Use caution when interpreting changes in Race and Ethnicity over time. Starting with the 2000 Decennial Census, respondents were given a new option of selecting one or more race categories. Also in 2000, the placement of the question about Hispanic origin changed, helping to increase responsiveness to the Hispanic-origin question. Because of these and other changes, the 1990 data on race and ethnicity are not directly comparable with data from later censuses. (Source: <http://www.census.gov/prod/2001pubs/c2kbr01-1.pdf>;  
<http://www.census.gov/pred/www/rpts/Race%20and%20Ethnicity%20FINAL%20report.pdf>)

The "Minority" calculations are derived from Census and ACS data using both the race and ethnicity responses. On this report, "Minority" refers to individuals who list a race other than White and/or list their ethnicity as Hispanic/Latino. In other words, people who are multi-racial, any single race other than White, or Hispanic/Latino of any race are considered minorities.

Disability data is not included in the 2010 Decennial Census, or the 2006-2010 ACS. This data is available in the 2011-2015 ACS.

Because of changes made to the Census and ACS questions between 1990 and 2015, disability variables should not be compared from year to year. For example: 1) With the 1990 data the disabilities are listed as a "work disability" while this distinction is not made with 2000 or 2015 ACS data; 2) The 2015 ACS data includes the institutionalized population (e.g. persons in prisons and group homes), while this population is not included in 1990 or 2000; 3) the age groupings changed over the years.

Please take the following two concerns into account when viewing this data: 1) With the 1990 data the disabilities are listed as a "work disability" while this distinction is not made with 2000 or 2015 ACS data; 2) The 2015 ACS data includes the institutionalized population (e.g. persons in prisons and group homes), while this population is not included in 1990 or 2000.

The category Bachelor's Degree or Higher under the heading Educational Attainment Trends is a subset of the category High School Graduate or Higher.

Income of households. This includes the income of the householder and all other individuals 15 years old and over in the household, whether they are related to the householder or not. Because many households consist of only one person, average household income is usually less than average family income.

Income of families. In compiling statistics on family income, the incomes of all members 15 years old and over related to the householder are summed and treated as a single amount.

Age Trends median age for 1990 is not available.

### **Land Use Data**

The Land Use information Indicates acreages and percentages for the generalized land use types used to group parcel-specific, existing land use assigned by the county property appraiser office according to the Florida Department of Revenue land use codes.

### **Community Facilities Data**

- Assisted Rental Housing Units - Identifies multifamily rental developments that receive funding assistance under federal, state, and local government programs to offer affordable housing as reported by the Shimberg Center for Housing Studies, University of Florida.
- Mobile Home Parks - Identifies approved or acknowledged mobile home parks reported by the Florida Department of Business and Professional Regulation and Florida Department of Health.



- Migrant Camps - Identifies migrant labor camp facilities inspected by the Florida Department of Health.
- Group Care Facilities - Identifies group care facilities inspected by the Florida Department of Health.
- Community Center and Fraternal Association Facilities - Identifies facilities reported by multiple sources.
- Law Enforcement Correctional Facilities - Identifies facilities reported by multiple sources.
- Cultural Centers - Identifies cultural centers including organizations, buildings, or complexes that promote culture and arts (e.g., aquariums and zoological facilities; arboreta and botanical gardens; dinner theaters; drive-ins; historical places and services; libraries; motion picture theaters; museums and art galleries; performing arts centers; performing arts theaters; planetariums; studios and art galleries; and theater producers stage facilities) reported by multiple sources.
- Fire Department and Rescue Station Facilities - Identifies facilities reported by multiple sources.
- Government Buildings - Identifies local, state, and federal government buildings reported by multiple sources.
- Health Care Facilities - Identifies health care facilities including abortion clinics, dialysis clinics, medical doctors, nursing homes, osteopaths, state laboratories/clinics, and surgicenters/walk-in clinics reported by the Florida Department of Health.
- Hospital Facilities - Identifies hospital facilities reported by multiple sources.
- Law Enforcement Facilities - Identifies law enforcement facilities reported by multiple sources.
- Parks and Recreational Facilities - Identifies parks and recreational facilities reported by multiple sources.
- Religious Center Facilities - Identifies religious centers including churches, temples, synagogues, mosques, chapels, centers, and other types of religious facilities reported by multiple sources.
- Private and Public Schools - Identifies private and public schools reported by multiple sources.
- Social Service Centers - Identifies social service centers reported by multiple sources.
- Veteran Organizations and Facilities

# Manatee County Demographic Profile

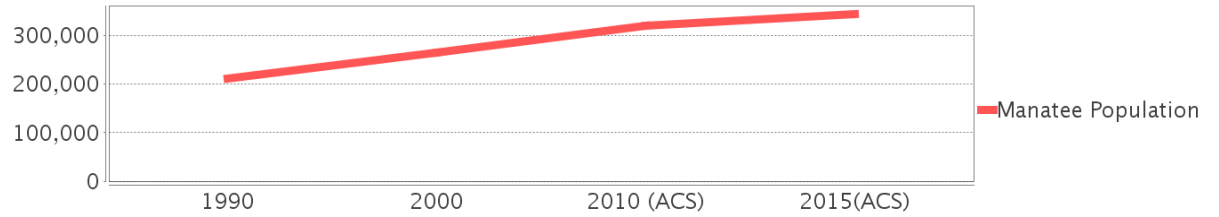
## General Population Trends - Manatee

Description	1990	2000	2010 (ACS)	2015(ACS)
Total Population	211,707	264,002	318,619	343,729
Total Households	91,060	112,460	131,200	134,725
Average Persons per Acre	0.439	0.541	0.652	0.704
Average Persons per Household	2.325	2.294	2.00	2.52
Average Persons per Family	2.805	2.862	3.033	3.158
Males	100,147	127,294	154,353	166,067
Females	111,560	136,708	164,266	177,662

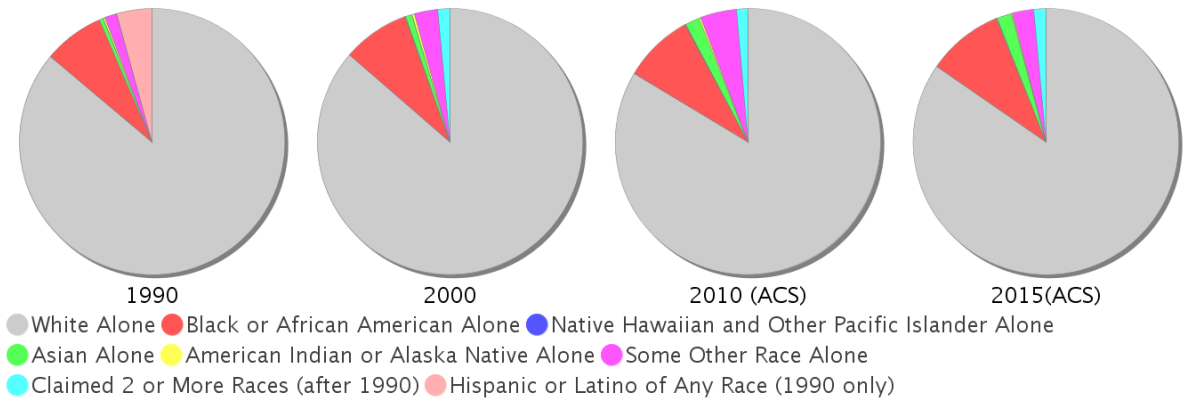
## Race and Ethnicity Trends - Manatee

Description	1990	2000	2010 (ACS)	2015(ACS)
White Alone	190,328 (89.90%)	227,927 (86.34%)	266,303 (83.58%)	290,861 (84.62%)
Black or African American Alone	16,400 (7.75%)	21,580 (8.17%)	27,313 (8.57%)	31,903 (9.28%)
Native Hawaiian and Other Pacific Islander Alone	(NA)	115 (0.04%)	243 (0.08%)	179 (0.05%)
Asian Alone	1,165 (0.55%)	2,237 (0.85%)	5,512 (1.73%)	6,309 (1.84%)
American Indian or Alaska Native Alone	501 (0.24%)	741 (0.28%)	745 (0.23%)	545 (0.16%)
Some Other Race Alone	3,251 (1.54%)	7,540 (2.86%)	14,095 (4.42%)	8,841 (2.57%)
Claimed 2 or More Races	(NA)	3,862 (1.46%)	4,408 (1.38%)	5,091 (1.48%)
Hispanic or Latino of Any Race	9,424 (4.45%)	24,501 (9.28%)	44,460 (13.95%)	53,393 (15.53%)
Not Hispanic or Latino	202,283 (95.55%)	239,501 (90.72%)	274,159 (86.05%)	290,336 (84.47%)
Minority	85,883 (40.57%)	51,521 (19.52%)	85,883 (26.95%)	95,461 (27.77%)

County Population



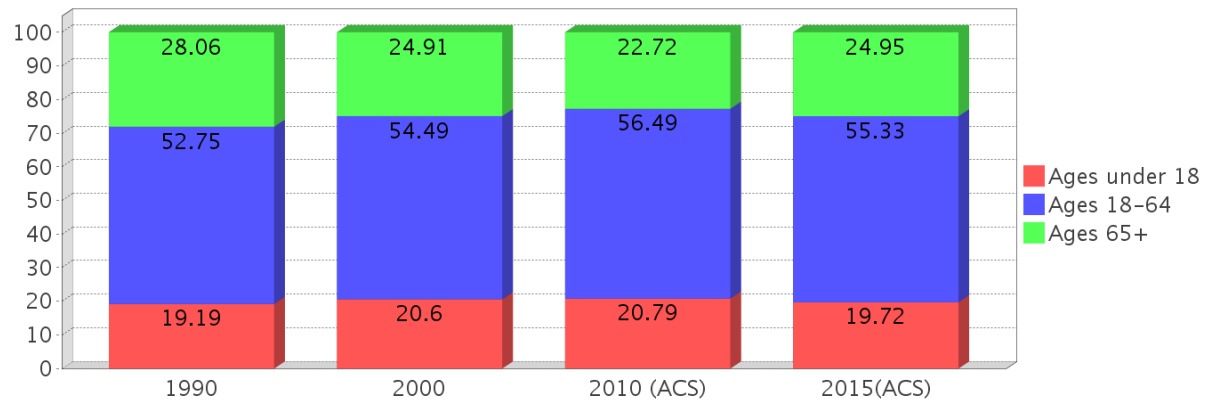
County Race



### Age Trends - Manatee

Description	1990	2000	2010 (ACS)	2015(ACS)
Under Age 5	5.83%	5.68%	5.82%	5.17%
Ages 5-17	13.35%	14.92%	14.97%	14.55%
Ages 18-21	4.06%	3.77%	4.06%	4.20%
Ages 22-29	9.88%	8.01%	8.11%	8.00%
Ages 30-39	13.36%	12.68%	10.56%	10.04%
Ages 40-49	10.34%	13.38%	13.34%	12.07%
Ages 50-64	15.11%	16.66%	20.43%	21.02%
Age 65 and Over	28.06%	24.91%	22.72%	24.95%
-Ages 65-74	15.60%	12.50%	11.53%	13.39%
-Ages 75-84	9.72%	9.45%	8.36%	8.20%
-Age 85 and Over	2.74%	2.97%	2.83%	3.36%
Median Age	NA	44	45	47

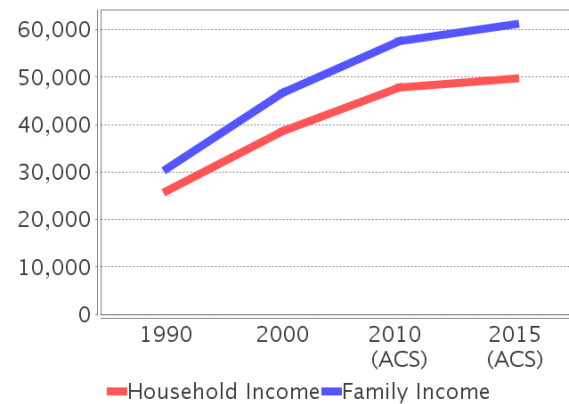
Percentage Population by Age Group



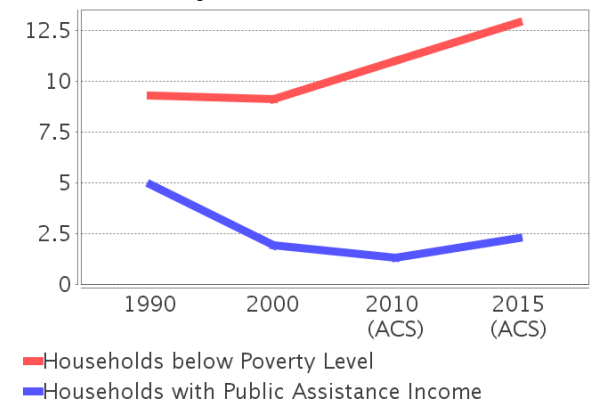
### Income Trends - Manatee

Description	1990	2000	2010 (ACS)	2015(ACS)
Median Household Income	\$25,951	\$38,673	\$47,812	\$49,675
Median Family Income	\$30,698	\$46,576	\$57,547	\$61,149
Population below Poverty Level	10.20%	10.08%	12.77%	15.20%
Households below Poverty Level	9.31%	9.13%	11.01%	12.88%
Households with Public Assistance Income	4.90%	1.92%	1.32%	2.28%

Income Trends



Poverty and Public Assistance



### Disability Trends - Manatee

See the Data Sources section below for an explanation about the differences in disability data among the various years.

Description	1990	2000	2010 (ACS)	2015(ACS)
Population 16 To 64 Years with a disability	10,753 (6.25%)	32,131 (13.15%)	NA (NA)	NA (NA)
Population 20 To 64 Years with a disability	NA (NA)	NA (NA)	NA (NA)	18,098 (9.94%)

## Educational Attainment Trends - Manatee

Age 25 and Over

Description	1990	2000	2010 (ACS)	2015(ACS)
Less than 9th Grade	12,700	10,847	11,115	12,937
9th to 12th Grade, No Diploma	25,488	24,930	19,030	17,574
High School Graduate or Higher	118,189	157,012	199,808	221,188
Bachelor's Degree or Higher	24,178	40,059	58,929	69,692

## Language Trends - Manatee

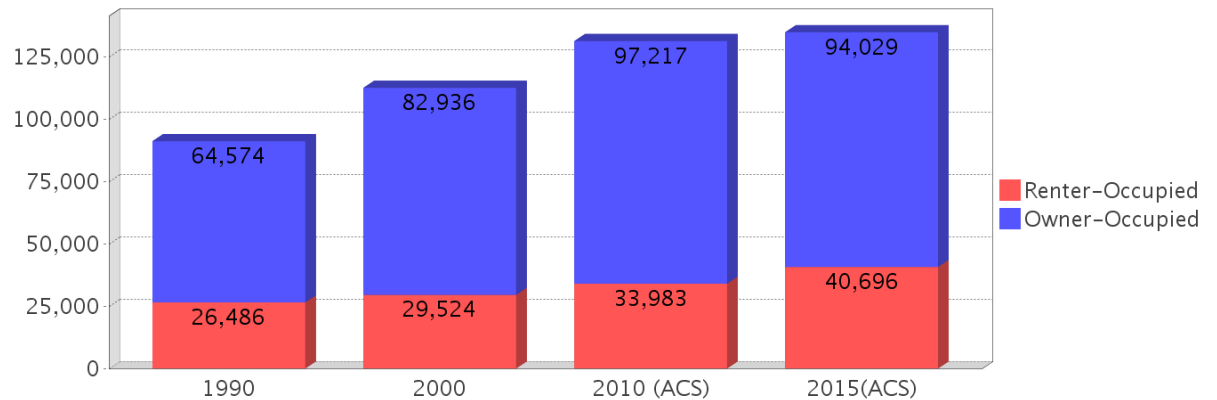
Age 5 and Over

Description	1990	2000	2010 (ACS)	2015(ACS)
Speaks English Well	3,288	6,459	10,169	10,559
Speaks English Not Well	NA	4,552	9,106	9,538
Speaks English Not at All	NA	2,427	3,809	2,321
Speaks English Not Well or Not at All	2,902	6,979	12,915	11,859

## Housing Trends - Manatee

Description	1990	2000	2010 (ACS)	2015(ACS)
Total	115,245	138,128	170,719	177,046
Units per Acre	0.239	0.283	0.35	0.363
Single-Family Units	48,723	72,151	97,709	105,563
Multi-Family Units	24,475	37,117	43,360	42,472
Mobile Home Units	16,910	27,891	29,316	28,538
Owner-Occupied Units	64,574	82,936	97,217	94,029
Renter-Occupied Units	26,486	29,524	33,983	40,696
Vacant Units	24,185	25,668	39,519	42,321
Median Housing Value	\$79,000	\$96,000	\$214,000	\$169,000
Occupied Housing Units w/No Vehicle	6,126 (6.73%)	7,342 (6.53%)	5,974 (4.55%)	7,400 (5.49%)

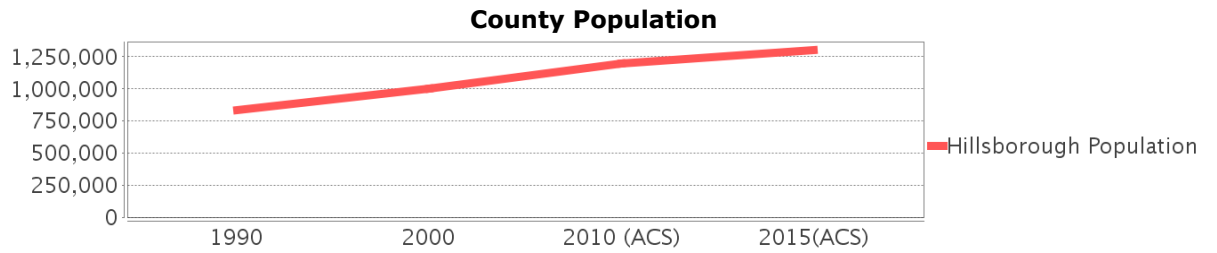
## Housing Tenure



# Hillsborough County Demographic Profile

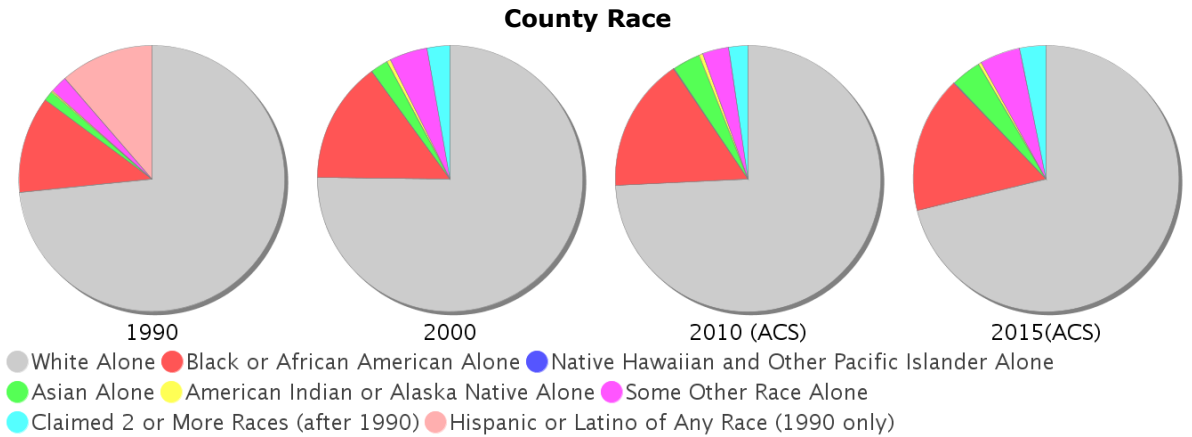
## General Population Trends - Hillsborough

Description	1990	2000	2010 (ACS)	2015(ACS)
Total Population	834,054	998,948	1,200,236	1,302,884
Total Households	324,872	391,357	462,447	486,078
Average Persons per Acre	1.216	1.458	1.751	1.90
Average Persons per Household	2.567	2.508	3.00	2.64
Average Persons per Family	3.106	3.156	3.262	3.375
Males	406,217	488,596	585,512	635,632
Females	427,837	510,352	614,724	667,252



## Race and Ethnicity Trends - Hillsborough

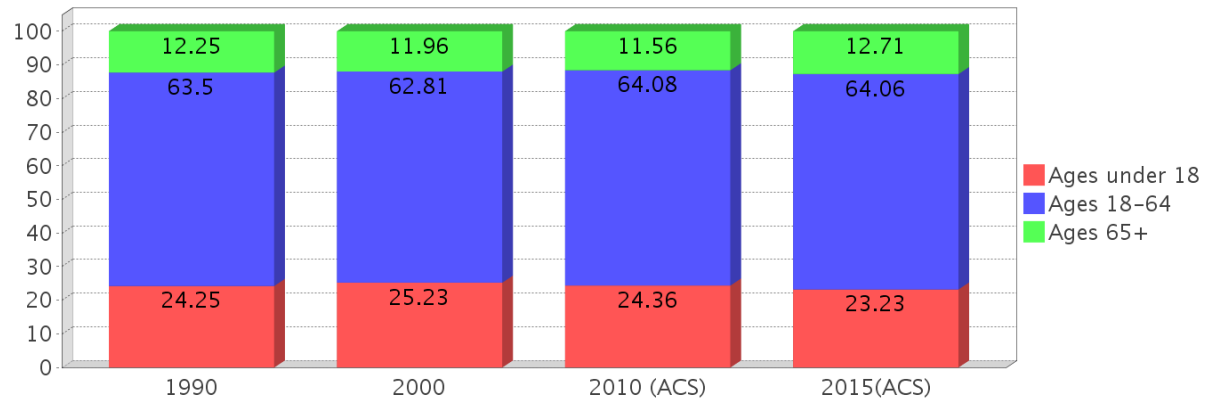
Description	1990	2000	2010 (ACS)	2015(ACS)
White Alone	690,352 (82.77%)	750,497 (75.13%)	890,392 (74.18%)	926,752 (71.13%)
Black or African American Alone	110,283 (13.22%)	147,966 (14.81%)	196,352 (16.36%)	216,735 (16.64%)
Native Hawaiian and Other Pacific Islander Alone	(NA)	540 (0.05%)	773 (0.06%)	1,061 (0.08%)
Asian Alone	11,093 (1.33%)	21,571 (2.16%)	40,285 (3.36%)	48,093 (3.69%)
American Indian or Alaska Native Alone	2,454 (0.29%)	4,175 (0.42%)	5,523 (0.46%)	4,665 (0.36%)
Some Other Race Alone	19,586 (2.35%)	46,587 (4.66%)	39,276 (3.27%)	64,340 (4.94%)
Claimed 2 or More Races	(NA)	27,612 (2.76%)	27,635 (2.30%)	41,238 (3.17%)
Hispanic or Latino of Any Race	106,908 (12.82%)	179,637 (17.98%)	286,394 (23.86%)	339,540 (26.06%)
Not Hispanic or Latino	727,146 (87.18%)	819,311 (82.02%)	913,842 (76.14%)	963,344 (73.94%)
Minority	568,661 (68.18%)	366,644 (36.70%)	568,661 (47.38%)	627,917 (48.19%)



### Age Trends - Hillsborough

Description	1990	2000	2010 (ACS)	2015(ACS)
Under Age 5	7.30%	6.77%	6.70%	6.39%
Ages 5-17	16.95%	18.46%	17.66%	16.84%
Ages 18-21	5.96%	5.33%	5.91%	5.71%
Ages 22-29	14.20%	11.31%	11.83%	11.72%
Ages 30-39	17.39%	16.38%	13.93%	13.78%
Ages 40-49	12.95%	15.22%	15.18%	14.09%
Ages 50-64	13.00%	14.57%	17.23%	18.77%
Age 65 and Over	12.25%	11.96%	11.56%	12.71%
-Ages 65-74	7.41%	6.46%	6.21%	7.19%
-Ages 75-84	3.83%	4.20%	3.87%	3.87%
-Age 85 and Over	1.00%	1.29%	1.48%	1.65%
Median Age	NA	35	36	37

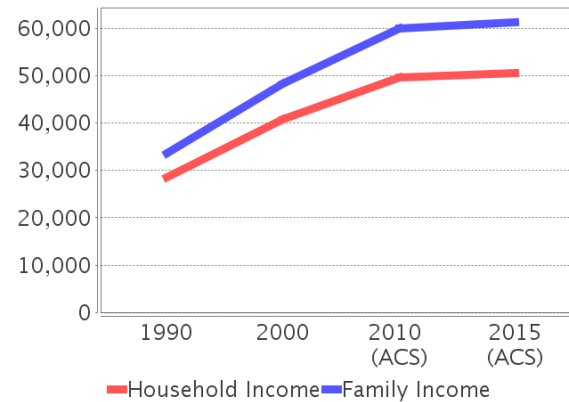
Percentage Population by Age Group



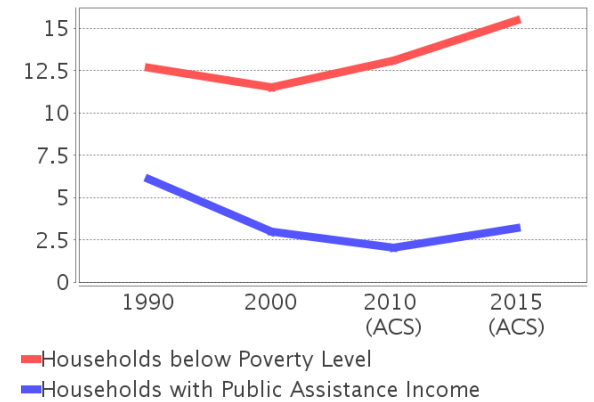
### Income Trends - Hillsborough

Description	1990	2000	2010 (ACS)	2015(ACS)
Median Household Income	\$28,477	\$40,663	\$49,536	\$50,579
Median Family Income	\$33,645	\$48,223	\$59,886	\$61,262
Population below Poverty Level	13.29%	12.51%	14.17%	16.97%
Households below Poverty Level	12.66%	11.50%	13.11%	15.45%
Households with Public Assistance Income	6.07%	3.01%	2.06%	3.18%

Income Trends



Poverty and Public Assistance



### Disability Trends - Hillsborough

See the Data Sources section below for an explanation about the differences in disability data among the various years.

Description	1990	2000	2010 (ACS)	2015(ACS)
Population 16 To 64 Years with a disability	48,345 (7.57%)	136,465 (14.85%)	NA (NA)	NA (NA)
Population 20 To 64 Years with a disability	NA (NA)	NA (NA)	NA (NA)	79,106 (9.96%)

## Educational Attainment Trends - Hillsborough

Age 25 and Over

Description	1990	2000	2010 (ACS)	2015(ACS)
Less than 9th Grade	48,247	41,209	41,965	43,073
9th to 12th Grade, No Diploma	84,751	84,574	69,127	66,133
High School Graduate or Higher	412,022	528,058	672,988	762,685
Bachelor's Degree or Higher	110,070	164,109	226,113	266,437

## Language Trends - Hillsborough

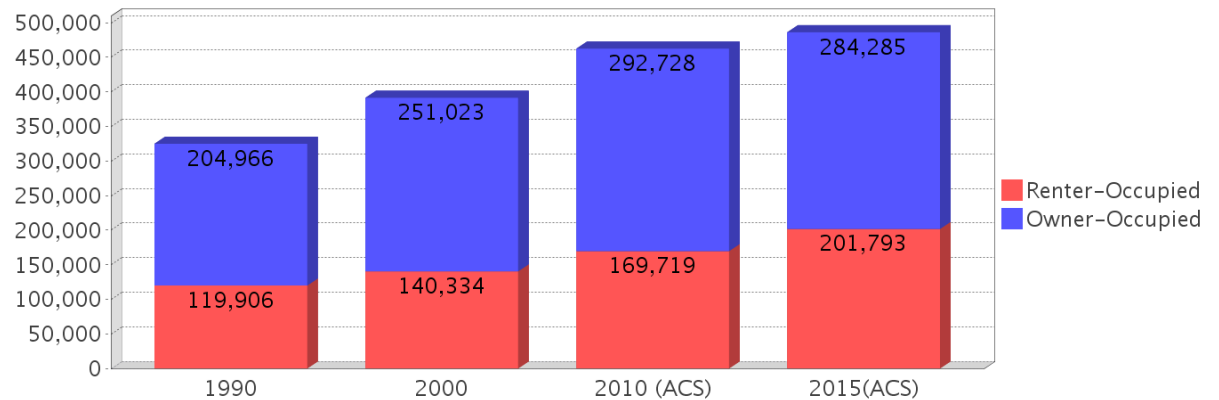
Age 5 and Over

Description	1990	2000	2010 (ACS)	2015(ACS)
Speaks English Well	23,611	39,227	54,355	50,719
Speaks English Not Well	NA	28,250	39,803	44,487
Speaks English Not at All	NA	13,819	19,950	24,627
Speaks English Not Well or Not at All	20,956	42,069	59,753	69,114

## Housing Trends - Hillsborough

Description	1990	2000	2010 (ACS)	2015(ACS)
Total	367,740	425,962	526,016	549,024
Units per Acre	0.536	0.622	0.768	0.80
Single-Family Units	200,373	260,157	330,155	345,207
Multi-Family Units	87,418	122,837	153,087	161,555
Mobile Home Units	34,499	42,063	42,158	41,562
Owner-Occupied Units	204,966	251,023	292,728	284,285
Renter-Occupied Units	119,906	140,334	169,719	201,793
Vacant Units	42,868	34,605	63,569	62,946
Median Housing Value	\$72,400	\$91,800	\$198,900	\$159,200
Occupied Housing Units w/No Vehicle	28,289 (8.71%)	31,680 (8.09%)	30,440 (6.58%)	34,742 (7.15%)

### Housing Tenure





---

## County Data Sources

Demographic data reported is from the U.S. Decennial Census (1990, 2000) and the American Community Survey (ACS) 5-year estimates from 2006-2010 and 2011-2015. The data was gathered at the county level. Depending on the dataset, the data represents 100% counts (Census Summary File 1) or sample-based information (Census Summary File 3 or ACS).

### About the Census Data:

Use caution when comparing the 100% count data (Decennial Census) to the sample-based data (ACS). In any given year, about one in 40 or 2.5% of U.S. households will receive the ACS questionnaire. Over any five-year period, about one in eight households will receive the questionnaire, as compared to about one in six that received the long form questionnaire for the Decennial Census 2000. (Source: <http://mcdc.missouri.edu/pub/data/acs/Readme.shtml>) The U.S. Census Bureau provides help with this process:

[http://www.census.gov/acs/www/guidance\\_for\\_data\\_users/comparing\\_2015/](http://www.census.gov/acs/www/guidance_for_data_users/comparing_2015/)

Use caution when interpreting changes in Race and Ethnicity over time. Starting with the 2000 Decennial Census, respondents were given a new option of selecting one or more race categories. Also in 2000, the placement of the question about Hispanic origin changed, helping to increase responsiveness to the Hispanic-origin question. Because of these and other changes, the 1990 data on race and ethnicity are not directly comparable with data from later censuses. (Source: <http://www.census.gov/prod/2001pubs/c2kbr01-1.pdf>;  
<http://www.census.gov/pred/www/rpts/Race%20and%20Ethnicity%20FINAL%20report.pdf>)

The "Minority" calculations are derived from Census and ACS data using both the race and ethnicity responses. On this report, "Minority" refers to individuals who list a race other than White and/or list their ethnicity as Hispanic/Latino. In other words, people who are multi-racial, any single race other than White, or Hispanic/Latino of any race are considered minorities.

Disability data is not included in the 2010 Decennial Census, or the 2006-2010 ACS. This data is available in the 2011-2015 ACS.

Because of changes made to the Census and ACS questions between 1990 and 2015, disability variables should not be compared from year to year. For example: 1) With the 1990 data the disabilities are listed as a "work disability" while this distinction is not made with 2000 or 2015 ACS data; 2) The 2015 ACS data includes the institutionalized population (e.g. persons in prisons and group homes), while this population is not included in 1990 or 2000; 3) the age groupings changed over the years.

Please take the following two concerns into account when viewing this data: 1) With the 1990 data the disabilities are listed as a "work disability" while this distinction is not made with 2000 or 2015 ACS data; 2) The 2015 ACS data includes the institutionalized population (e.g. persons in prisons and group homes), while this population is not included in 1990 or 2000.

source:

<https://www.census.gov/people/disability/methodology/acs.html>

<https://www.census.gov/population/www/cen2000/90vs00/index.html>

The category Bachelor's Degree or Higher under the heading Educational Attainment Trends is a subset of the category High School Graduate or Higher.

---

## Metadata

- Community and Fraternal Centers [https://etdmpub.florida-etat.org/metadata/gc\\_communitycenter.htm](https://etdmpub.florida-etat.org/metadata/gc_communitycenter.htm)
- Correctional Facilities in Florida [https://etdmpub.florida-etat.org/metadata/gc\\_correctional.htm](https://etdmpub.florida-etat.org/metadata/gc_correctional.htm)
- Cultural Centers in Florida [https://etdmpub.florida-etat.org/metadata/gc\\_culturecenter.htm](https://etdmpub.florida-etat.org/metadata/gc_culturecenter.htm)
- Fire Department and Rescue Station Facilities in Florida [https://etdmpub.florida-etat.org/metadata/gc\\_firestat.htm](https://etdmpub.florida-etat.org/metadata/gc_firestat.htm)
- Local, State, and Federal Government Buildings in Florida [https://etdmpub.florida-etat.org/metadata/gc\\_govbuild.htm](https://etdmpub.florida-etat.org/metadata/gc_govbuild.htm)
- Florida Health Care Facilities [https://etdmpub.florida-etat.org/metadata/gc\\_health.htm](https://etdmpub.florida-etat.org/metadata/gc_health.htm)
- Hospital Facilities in Florida [https://etdmpub.florida-etat.org/metadata/gc\\_hospitals.htm](https://etdmpub.florida-etat.org/metadata/gc_hospitals.htm)
- Law Enforcement Facilities in Florida [https://etdmpub.florida-etat.org/metadata/gc\\_lawenforce.htm](https://etdmpub.florida-etat.org/metadata/gc_lawenforce.htm)
- Florida Parks and Recreational Facilities [https://etdmpub.florida-etat.org/metadata/gc\\_parks.htm](https://etdmpub.florida-etat.org/metadata/gc_parks.htm)
- Religious Centers [https://etdmpub.florida-etat.org/metadata/gc\\_religion.htm](https://etdmpub.florida-etat.org/metadata/gc_religion.htm)
- Florida Public and Private Schools [https://etdmpub.florida-etat.org/metadata/gc\\_schools.htm](https://etdmpub.florida-etat.org/metadata/gc_schools.htm)
- Social Service Centers [https://etdmpub.florida-etat.org/metadata/gc\\_socialservice.htm](https://etdmpub.florida-etat.org/metadata/gc_socialservice.htm)
- Assisted Rental Housing Units in Florida [https://etdmpub.florida-etat.org/metadata/gc\\_assisted\\_housing.htm](https://etdmpub.florida-etat.org/metadata/gc_assisted_housing.htm)
- Group Care Facilities <https://etdmpub.florida-etat.org/metadata/groupcare.htm>
- Mobile Home Parks in Florida [https://etdmpub.florida-etat.org/metadata/gc\\_mobilehomes.htm](https://etdmpub.florida-etat.org/metadata/gc_mobilehomes.htm)
- Migrant Camps in Florida <https://etdmpub.florida-etat.org/metadata/migrant.htm>
- Veteran Organizations and Facilities [https://etdmpub.florida-etat.org/metadata/gc\\_veterans.htm](https://etdmpub.florida-etat.org/metadata/gc_veterans.htm)
- Generalized Land Use - Florida DOT District 1 [https://etdmpub.florida-etat.org/metadata/d1\\_lu\\_gen.htm](https://etdmpub.florida-etat.org/metadata/d1_lu_gen.htm)
- Generalized Land Use - Florida DOT District 7 [https://etdmpub.florida-etat.org/metadata/d7\\_lu\\_gen.htm](https://etdmpub.florida-etat.org/metadata/d7_lu_gen.htm)
- Census Block Groups in Florida [https://etdmpub.florida-etat.org/metadata/e2\\_cenacs\\_cci.htm](https://etdmpub.florida-etat.org/metadata/e2_cenacs_cci.htm)
- 1990 Census Block Groups in Florida [https://etdmpub.florida-etat.org/metadata/e2\\_cenblkgrp\\_1990\\_cci.htm](https://etdmpub.florida-etat.org/metadata/e2_cenblkgrp_1990_cci.htm)
- 2000 Census Block Groups in Florida [https://etdmpub.florida-etat.org/metadata/e2\\_cenblkgrp\\_2000\\_cci.htm](https://etdmpub.florida-etat.org/metadata/e2_cenblkgrp_2000_cci.htm)
- 2010 Census Block Groups in Florida [https://etdmpub.florida-etat.org/metadata/e2\\_cenblkgrp\\_2010\\_cci.htm](https://etdmpub.florida-etat.org/metadata/e2_cenblkgrp_2010_cci.htm)