

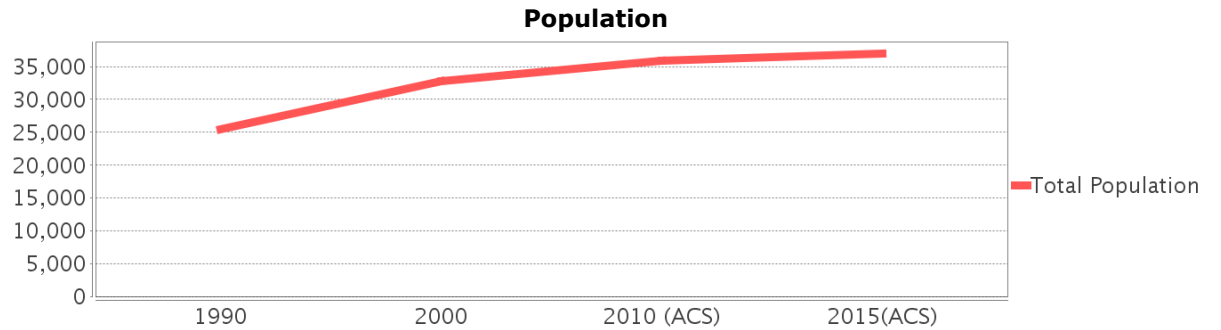
Sociocultural Data Report

University Area Community

Area: 4.243 square miles
Jurisdiction(s): **Cities:** Temple Terrace, Tampa
Counties: Hillsborough

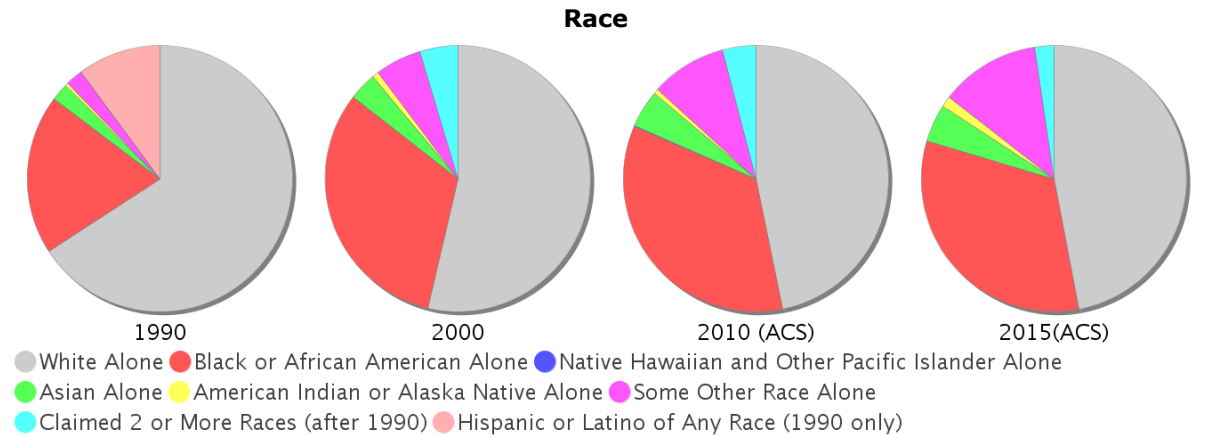
General Population Trends

Description	1990	2000	2010 (ACS)	2015(ACS)
Total Population	25,480	32,847	35,954	36,969
Total Households	11,588	14,630	15,587	14,792
Average Persons per Acre	10.70	13.57	18.14	18.75
Average Persons per Household	2.50	2.24	2.26	2.33
Average Persons per Family	2.86	3.08	2.97	3.31
Males	12,754	15,946	17,476	17,346
Females	12,726	16,902	18,478	19,623

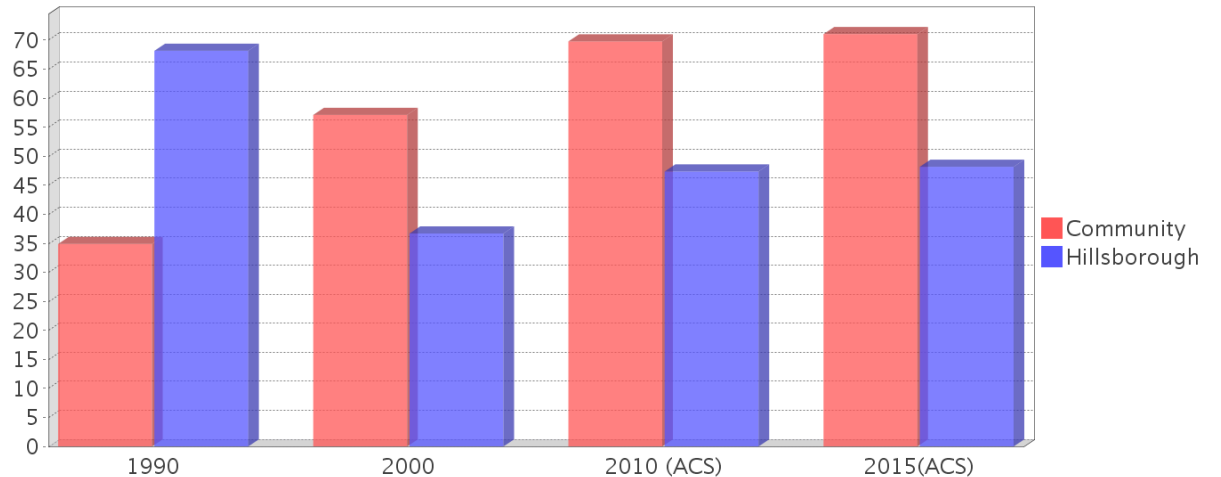


Race and Ethnicity Trends

Description	1990	2000	2010 (ACS)	2015(ACS)
White Alone	18,654 (73.21%)	17,620 (53.64%)	16,827 (46.80%)	17,384 (47.02%)
Black or African American Alone	5,514 (21.64%)	10,486 (31.92%)	12,464 (34.67%)	12,042 (32.57%)
Native Hawaiian and Other Pacific Islander Alone	10 (0.04%)	0 (0.00%)	37 (0.10%)	0 (0.00%)
Asian Alone	597 (2.34%)	1,103 (3.36%)	1,626 (4.52%)	1,685 (4.56%)
American Indian or Alaska Native Alone	101 (0.40%)	257 (0.78%)	219 (0.61%)	490 (1.33%)
Some Other Race Alone	605 (2.37%)	1,856 (5.65%)	3,318 (9.23%)	4,510 (12.20%)
Claimed 2 or More Races	NA (NA)	1,525 (4.64%)	1,462 (4.07%)	857 (2.32%)
Hispanic or Latino of Any Race	2,870 (11.26%)	6,220 (18.94%)	10,761 (29.93%)	12,278 (33.21%)
Not Hispanic or Latino	22,610 (88.74%)	26,627 (81.06%)	25,193 (70.07%)	24,691 (66.79%)
Minority	8,891 (34.89%)	18,764 (57.13%)	25,093 (69.79%)	26,267 (71.05%)



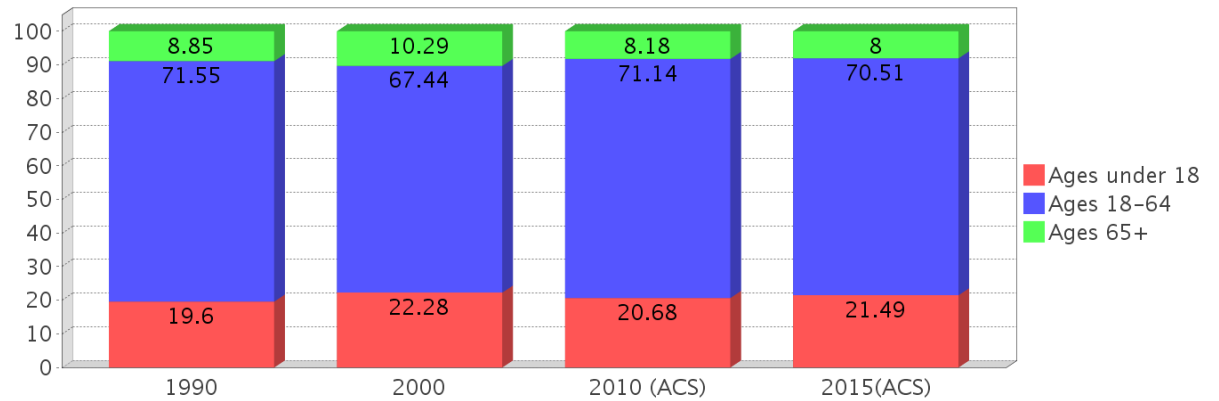
Minority Percentage Population



Age Trends

Description	1990	2000	2010 (ACS)	2015(ACS)
Under Age 5	8.07%	8.04%	8.05%	8.34%
Ages 5-17	11.54%	14.23%	12.64%	13.15%
Ages 18-21	11.26%	12.16%	13.18%	13.36%
Ages 22-29	28.49%	22.30%	23.89%	21.79%
Ages 30-39	16.71%	14.50%	13.41%	15.20%
Ages 40-49	8.16%	11.17%	9.95%	9.19%
Ages 50-64	6.93%	7.29%	10.72%	10.97%
Age 65 and Over	8.85%	10.29%	8.18%	8.00%
-Ages 65-74	3.94%	3.22%	2.90%	3.26%
-Ages 75-84	3.32%	4.23%	2.56%	2.42%
-Age 85 and Over	1.59%	2.84%	2.71%	2.32%
Median Age	NA	28	27	28

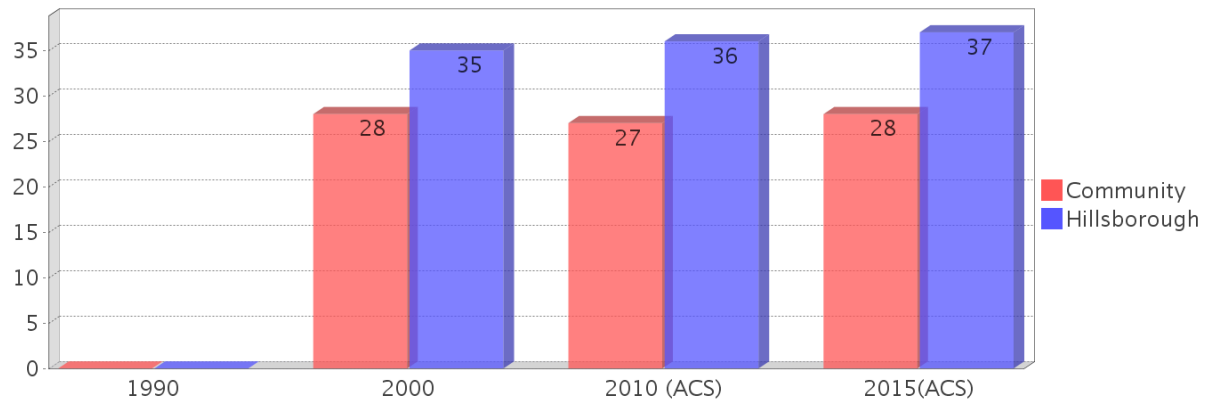
Population by Age Group



Income Trends

Description	1990	2000	2010 (ACS)	2015(ACS)
Median Household Income	\$17,352	\$23,529	\$21,817	\$22,035
Median Family Income	\$21,632	\$25,817	\$29,911	NA
Population below Poverty Level	26.04%	29.10%	36.14%	42.54%
Households below Poverty Level	26.51%	26.87%	34.57%	42.02%
Households with Public Assistance Income	6.38%	4.95%	5.25%	4.45%

Median Age Comparison

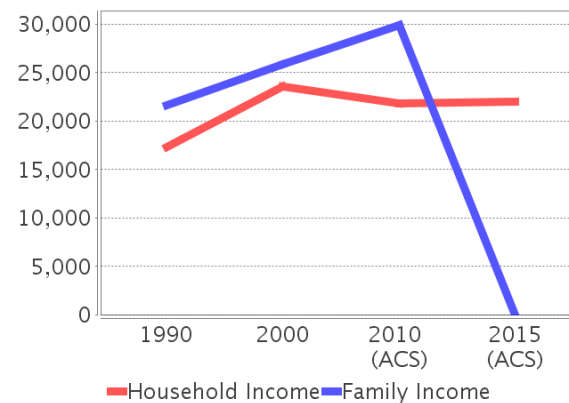


Disability Trends

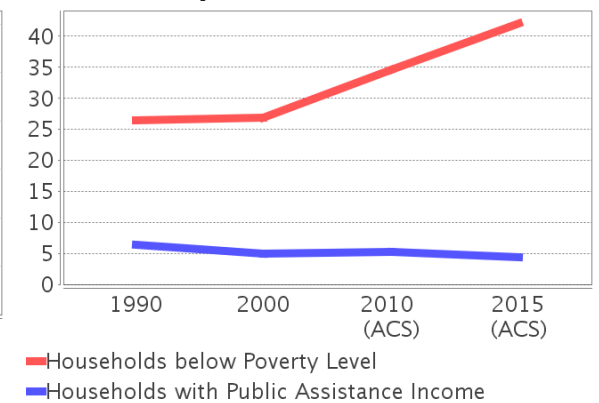
See the Data Sources section below for an explanation about the differences in disability data among the various years.

Description	1990	2000	2010 (ACS)	2015(ACS)
Population 16 To 64 Years with a disability	1698 (8.70%)	5929 (20.24%)	(NA)	(NA)
Population 20 To 64 Years with a disability	(NA)	(NA)	(NA)	3261 (13.27%)

Income Trends



Poverty and Public Assistance



Educational Attainment Trends

Age 25 and Over

Description	1990	2000	2010 (ACS)	2015(ACS)
Less than 9th Grade	997 (6.92%)	1,417 (7.87%)	1,859 (8.78%)	2,543 (12.44%)
9th to 12th Grade, No Diploma	1,915 (13.29%)	2,847 (15.82%)	2,827 (13.36%)	2,333 (11.41%)
High School Graduate or Higher	11,492 (79.78%)	13,734 (76.31%)	16,478 (77.86%)	15,565 (76.15%)
Bachelor's Degree or Higher	3,479 (24.15%)	4,177 (23.21%)	5,024 (23.74%)	4,121 (20.16%)

Language Trends

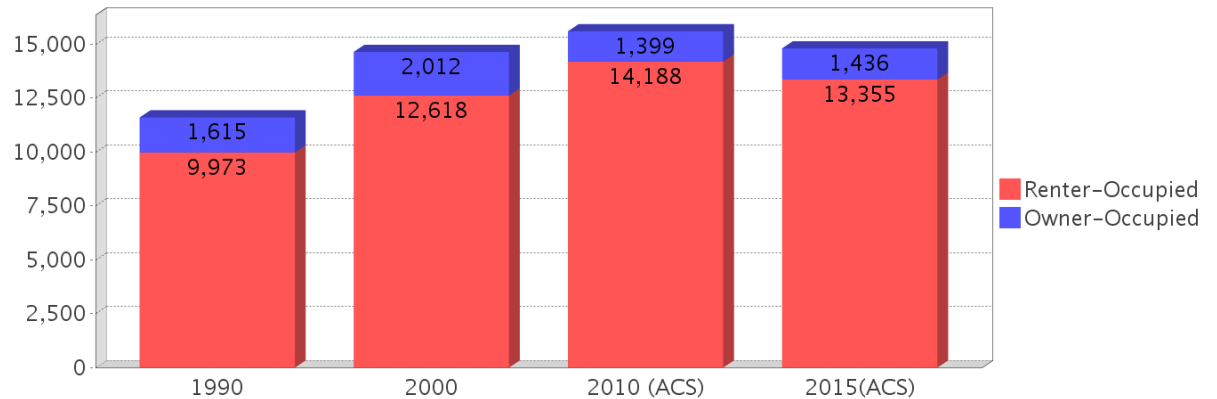
Age 5 and Over

Description	1990	2000	2010 (ACS)	2015(ACS)
Speaks English Well	881 (3.76%)	1,639 (5.43%)	2,242 (6.71%)	1,674 (4.94%)
Speaks English Not Well	NA (NA)	1,043 (3.45%)	1,870 (5.60%)	2,413 (7.12%)
Speaks English Not at All	NA (NA)	513 (1.70%)	1,552 (4.65%)	1,923 (5.68%)
Speaks English Not Well or Not at All	727 (3.10%)	1,556 (5.15%)	3,422 (10.25%)	4,336 (12.80%)

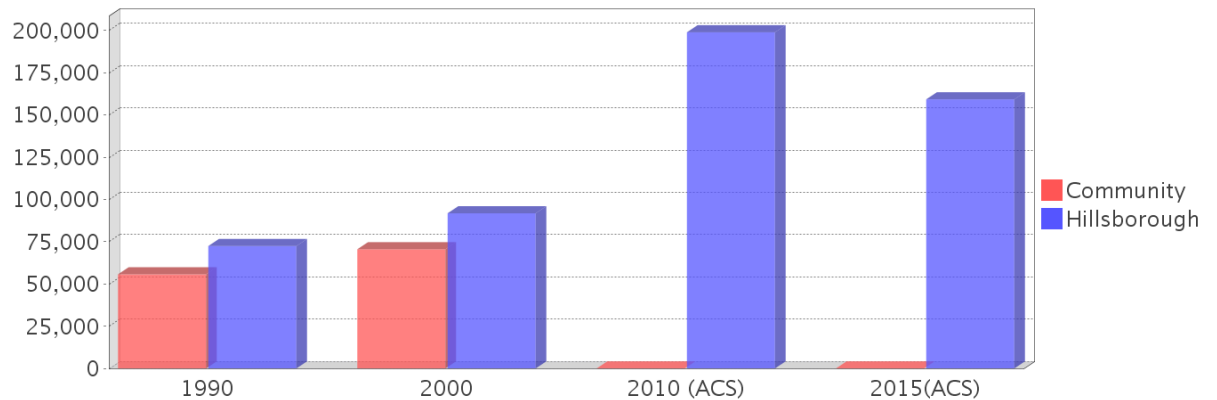
Housing Trends

Description	1990	2000	2010 (ACS)	2015(ACS)
Total	15,729	16,542	19,649	18,541
Units per Acre	5.38	5.41	6.44	6.06
Single-Family Units	1,100	1,644	2,129	2,144
Multi-Family Units	9,592	14,119	16,016	15,567
Mobile Home Units	789	757	921	813
Owner-Occupied Units	1,615	2,012	1,399	1,436
Renter-Occupied Units	9,973	12,618	14,188	13,355
Vacant Units	4,141	1,912	4,062	3,749
Median Housing Value	\$55,650	\$70,500	\$0	\$0
Occupied Housing Units w/No Vehicle	1,453 (12.54%)	3,126 (21.37%)	3,540 (22.71%)	3,410 (23.05%)

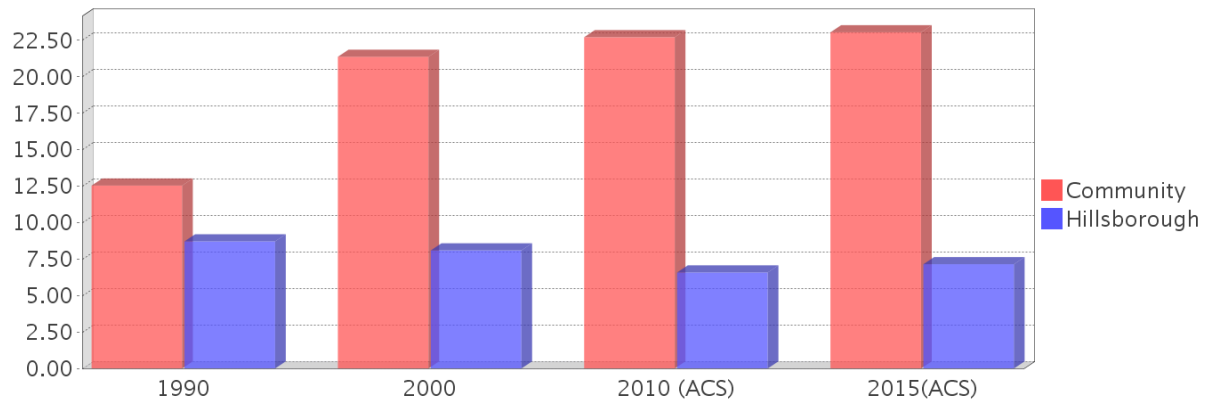
Housing Tenure



Median Housing Value Comparison

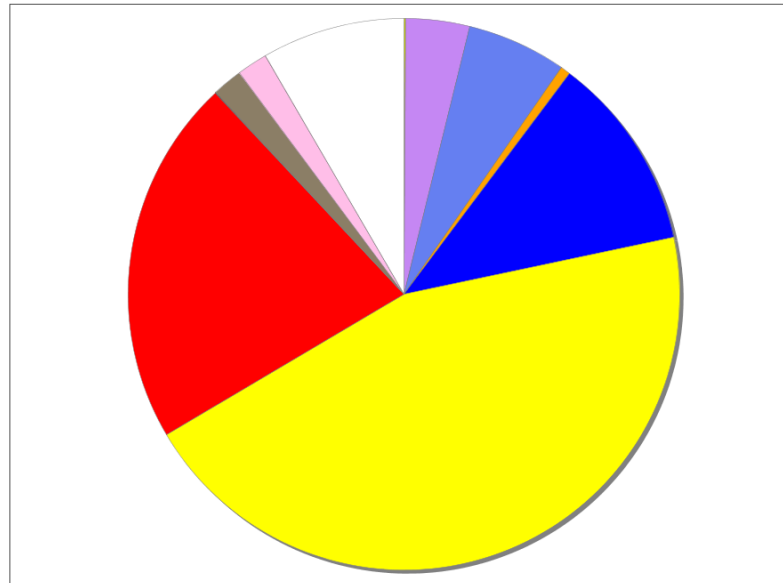


Occupied Units With No Vehicles Available



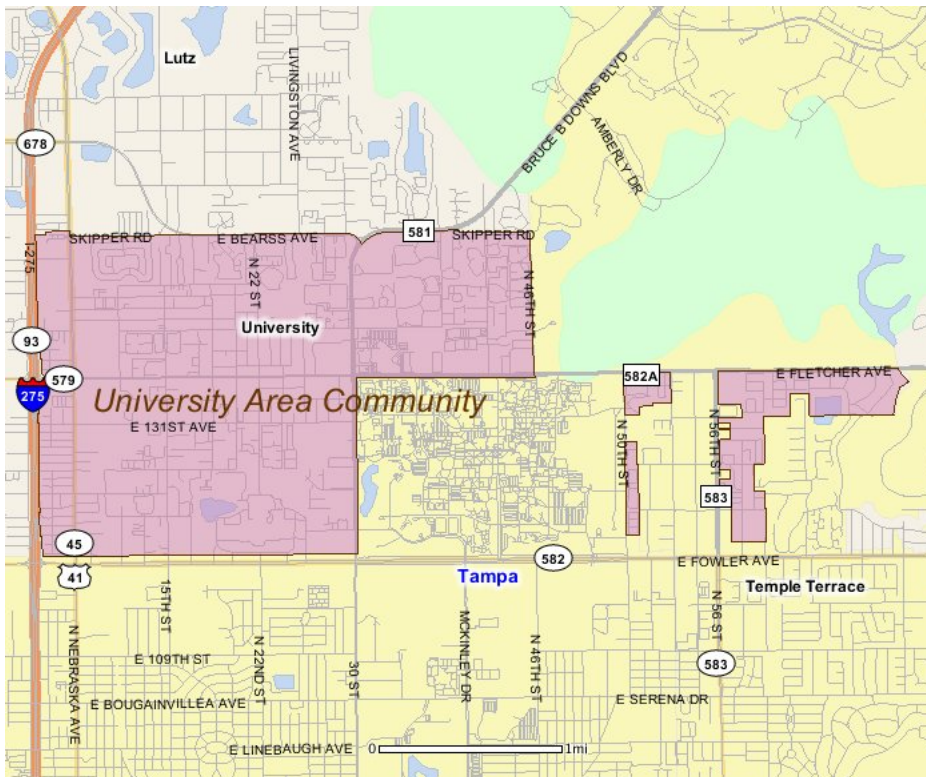
Existing Land Use

Land Use Type	Acres	Percentage
Acreage Not Zoned For Agriculture	2	0.07%
Agricultural	0	0.00%
Centrally Assessed	0	0.00%
Industrial	90	3.31%
Institutional	140	5.16%
Mining	0	0.00%
Other	14	0.52%
Public/Semi-Public	275	10.13%
Recreation	0	0.00%
Residential	1,077	39.66%
Retail/Office	517	19.04%
Row	1	0.04%
Vacant Residential	42	1.55%
Vacant Nonresidential	44	1.62%
Water	0	0.00%
Parcels With No Values	201	7.40%



- Acreage Not Zoned For Agriculture
- Agricultural
- Centrally Assessed
- Industrial
- Institutional
- Mining
- Other
- Public/Semi-Public
- Recreation
- Residential
- Retail/Office
- Row
- Vacant Residential
- Vacant Nonresidential
- Water
- Parcels With No Values

Location Maps



Community Facilities

The community facilities information below is useful in a variety of ways for environmental evaluations. These community resources should be evaluated for potential sociocultural effects, such as accessibility and relocation potential. The facility types may indicate the types of population groups present in the project study area. Facility staff and leaders can be sources of community information such as who uses the facility and how it is used. Additionally, community facilities are potential public meeting venues.

Assisted Housing (Points)

Facility Name	Address	Zip Code
ROYAL PALM KEY	1231 EAST FLETCHER AVENUE	33612
SPANISH TRACE	1480 VILLENA AVENUE	33612
OAKS AT STONE FOUNTAIN	13132 NORTH 20TH STREET	33612
NORTHSIDE PROPERTIES I	14011 N 22ND STREET	33613
CARLISLE LAKES	12535 TINSLEY CIRCLE	33612
CINNAMON COVE	12401 NORTH 15TH STREET	33612
CEDAR TRACE APARTMENTS	2200 CEDAR TRACE CIR	33613
COUNTRY OAKS APARTMENTS	14316 DAKE LN	33613
HASSINGER PROPERTIES C	1913 & 1915 EAST 137TH AVE.	33613
HASSINGER PROPERTIES D	1917 & 1919 EAST 137TH AVE.	33613
ST. JAMES PLACE	12614 CRESCENT OAKS PLACE	33612
ARBOR PLACE	1915 E 131 AVE	33612
NEW HORIZONS APARTMENTS	12718 N 19TH ST	33612
FOUNTAINVIEW	1301 FLOATING FOUNTAIN CIRCLE	33612
VILLAGE AT UNIVERSITY SQUARE APARTMENTS	11725 N 17TH ST	33612
EVERGREEN	1807 CANBERRA LANE	33612
JEFLIS	2204 E. 132ND AVENUE	33613

Community Boundaries (User defined)

Facility Name
University Area Community

Community Centers (Points)

Facility Name	Address	Zip Code
AMERICAN LEGION POST 334	929 E 139TH AVE	33613
PARALYZED VETERANS OF AMERICA NATIONAL SERVICE OFFICES	13000 BRUCE B DOWNS BLVD	33613
JUNIOR ACHIEVEMENT - TAMPA	13707 22ND ST N	33613
UNIVERSITY AREA COMMUNITY DEVELOPMENT CORP	14013 N 22ND ST	33613
ISLAMIC COMMUNITY OF TAMPA	5901 E 130TH AVE	33617

Cultural Centers (Points)

Facility Name	Address	Zip Code
UNIVERSITY COMMUNITY HOSPITAL - MEDICAL LIBRARY	3100 E FLETCHER AVE	33613
US DEPARTMENT OF VETERANS AFFAIRS - JAMES A HALEY VETERANS HOSPITAL-MEDICAL/PATIENTS LIBRARY	13000 BRUCE B DOWNS BLVD	33612

Fire Stations (Points)

Facility Name	Address	Zip Code
UCH FLETCHER RESCUE STATION 74	3100 E FLETCHER AVE	33613
N HILLSBOROUGH FIRE DEPARTMENT AND RESCUE STATION 14	113 E 139TH AVE	33613

Government Building

Facility Name	Address	Zip Code
HILLSBOROUGH COUNTY HEALTH DEPARTMENT - UNIVERSITY AREA COMMUNITY HEALTH CENTER	13601 N 22ND ST	33613

Healthcare Facilities (Geocoded)

Facility Name	Address	Zip Code
BADDOURA, NAJI MD	14434 BRUCE B DOWNS BOULEVARD	33613
WOMEN'S CARE FLORIDA LLC	13601 BRUCE B DOWNS BOULEVARD 160	33613
TAMPA BAY BREASTCARE SPECIALISTS	3000 MEDICAL PARK DRIVE 140	33613
VERIMED HEALTH GROUP	3000 MEDICAL PARK DRIVE, SUITE 450	33613
ANDERSON, PHILIP H MD	13801 BRUCE B DOWNS BOULEVARD 506	33613
GRANT, EDMUND G MD PA	13801 BRUCE B DOWNS BOULEVARD	33613
PATTERSON, JAMES	3102 E 138TH AVENUE 512	33613
SIEGEL RICHARD LAWRENCE MD PHD	3450 E FLETCHER AVENUE 210	33613
PALM GARDEN OF TAMPA, LLC D/B/A PALM GARDEN OF TAM	3612 E 138TH AVENUE	33613
OLDER AND SLONIM MDS PA	4444 E FLETCHER AVENUE D	33613
PEDIATRIC HEALTH CARE ALLIANCE PA	4446 E FLETCHER AVENUE A	33613
FAIRWAY OAKS CENTER	13806 N 46TH STREET	33613
PATEL, HIMANSHU MD PA	13305 N 56TH STREET	33617
ST JOHN'S MEDICAL CLINIC	12001 N NEBRASKA AVENUE	33612
NURSING CENTER AT UNIVERSITY VILLAGE THE	12250 N 22ND STREET	33612
TAMPA BAY RADIATION ONCOLOGY	12206 N BRUCE B DOWNS BOULEVARD 101	33612
CHANDRA, SUMESH MD	3000 E FLETCHER AVENUE 3	33613
KLINE, SARAH B MD PA	13601 BRUCE B DOWNS 211	33613
USF COLLEGE OF PUBLIC HEALTH	13901 BRUCE B DOWNS BOULEVARD	33612
WOMAN'S GROUP THE	3000 MEDICAL PARK DRIVE, SUITE 300	33613
FMC PULMONOLOGY TAMPA	3000 E FLETCHER AVENUE 270	33613
FLORIDA COMPREHENSIVE EPILEPSY AND SEIZURE DISORDE	3000 E FLETCHER AVENUE 250	33613
JSA MEDICAL GROUP - NORTH TAMPA PRIMARY CARE	14451 UNIVERSITY COVE PLACE	33613
CARDIOLOGY CENTER OF TAMPA BRUCE B DOWNS	13701 BRUCE B DOWNS BOULEVARD	33613
FHPG NEUROLOGY OF TAMPA	13801 BRUCE B DOWNS BOULEVARD, SUITE 201	33613
GERMAIN, BERNARD F MD PA	13801 BRUCE B DOWNS BOULEVARD, SUITE 101	33613
HUGHES, TEENA MD PA	4444 E FLETCHER AVENUE B	33613
RENAL CARE GROUP NORTH	4450 E FLETCHER AVENUE D	33613
HEARTCARE INSTITUTE OF TAMPA	14320 BRUCE B DOWNS BOULEVARD	33613
MEDEXPRESS URGENT CARE (BRUCE)	13610 BRUCE B DOWNS BOULEVARD	33613
BENCZE, KATHERINE S MD	13601 BRUCE B DOWNS BOULEVARD 2	33613
FHPG GASTROENTEROLOGY CENTER	3000 MEDICAL PARK DRIVE, SUITE 310	33613
LOVE, LUCY C MD PA	3000 E FLETCHER AVENUE 230	33613
PILA, KALMAN MD	3000 E FLETCHER AVENUE 300	33613
HIRSCHFELD JOSEPH J MD	3000 E FLETCHER BOULEVARD 260	33613
STEIN, DOUGLAS G MD	3000 E FLETCHER AVENUE 330	33613
TRUNNELL, THOMAS N MD	13801 BRUCE B DOWNS BOULEVARD 306	33613
WILBUR, JIMMIE J MD PA	13381 N 56TH STREET	33617
ACCENTIA HEALTH AND REHABILITATION CENTER OF TAMPA	1818 E FLETCHER AVENUE	33612
TAMPA WOMENS HEALTH CENTER	2010 E FLETCHER AVENUE	33612
TAMPA BAY HAND CENTER-AMBULATOR SURGERY DIV.	13905 BRUCE B DOWNS BOULEVARD	33613
FHPG DIABETES & ENDO INSTITUTE TAMPA	13901 N BRUCE B DOWNS BOULEVARD	33613
USF HEALTH AT UCH	3000 MEDICAL PARK DRIVE, SUITE 495	33613
TAMPA EAR NOSE THROAT ASSOCIATES	3000 MEDICAL PARK DRIVE, SUITE 200	33613
BAY AREA PRIMARY CARE ASSOCIATES (FLETCHER)	13701 BRUCE B DOWNS BOULEVARD 106	33613
TAMPA PAIN CLINIC	3500 E FLETCHER AVENUE, SUITE 502	33613
FHPG TAMPA UNIVERSITY FAMILY PRACTICE	4450 E FLETCHER AVENUE, SUITE C	33613
EXCEL REHABILITATION AND NURSING CENTER	2811 CAMPUS HILL DRIVE	33612
NEW TAMPA OB/GYN	14424 BRUCE B DOWNS BOULEVARD	33613
ALL WOMENS HEALTH CENTER OF NORTH TAMPA	14498 UNIVERSITY COVE PLACE	33613
FLORIDA PERINATAL ASSOCIATES	13601 BRUCE B DOWNS BOULEVARD 250	33613
FHPG CARDIAC SURGERY ASSOC OF TAMPA	3000 E FLETCHER AVENUE, SUITE 320	33613
O'NEAL, BOCADO MD'S	13701 BRUCE B DOWNS BOULEVARD, SUITE 113	33613
MOLLOY, RICHARD P MD PA	13801 BRUCE B DOWNS BOULEVARD 202	33613

Facility Name	Address	Zip Code
MARQUES VASCO M MD PA	3010 E 138TH AVENUE 12	33613
KLOTCH, DOUGLAS W MD	3450 E FLETCHER AVENUE, SUITE 260	33613
SELECT PHYSICAL THERAPY	3500 E FLETCHER AVENUE 110	33613
HIBEN, EUGENE E MD	13389 N 56TH STREET	33617
FMC FP TEMPLE TERRACE	13311 N 56TH STREET	33617
ALL CHILDREN'S SPECIALTY CARE OF TAMPA	12220 BRUCE B DOWNS BOULEVARD	33612
WOMEN'S CARE FLORIDA LLC	13601 BRUCE B DOWNS BOULEVARD 321	33613
BRIAN ZEBROWSKI MD	13601 BRUCE B DOWN BOULEVARD, SUITE 311	33613
FLORIDA CANCER SPECIALISTS MEDICAL PARK DR	3000 MEDICAL PARK DRIVE, SUITE 530	33613
CARDIOVASCULAR CENTER OF TAMPA	3000 E FLETCHER AVENUE, SUITE 370	33613
GELPI, MARGARITA MD	13701 BRUCE B DOWNS BOULEVARD	33613
JASIN, MICHAEL E MD PA	13801 BRUCE B DOWNS BOULEVARD 304	33613
HERNANDO BERNAL MD	13801 BRUCE B DOWNS BOULEVARD, SUITE 204	33613
FMC NEUROLOGY TPA	13801 BRUCE B DOWNS BOULEVARD, SUITE 401	33613
FMC PA	14547 BRUCE B DOWNS BOULEVARD	33613
ADVANCED PRIMARY CARE & LASER INS	4446 E FLETCHER AVENUE, SUITE D	33613
REDDY, ANOOP K MD PA	4446 E FLETCHER AVENUE	33613
NORTH TAMPA COMMUNITY HEALTH CTR	1502 E FOWLER AVENUE	33613
TFHC #24 UNIVERSITY AREA	13601 N 22ND STREET	33613
BAY AREA EYE INSTITUTE	14462 BRUCE B DOWNS BOULEVARD	33613
FLORIDA HOSPITAL PHYSICIANS GROUP	3000 MEDICAL PARK DRIVE, SUITE 310	33613
ALLERGY ASTHMA AND IMMUNOLOGY ASSOCS	13801 BRUCE B DOWNS BOULEVARD 502	33613
EYE SURGEON	13801 BRUCE B DOWNS 301	33613
FMC ENDOCRINOLOGY TPA	3010 E 138TH AVENUE, SUITE 1	33613
TAMPA PAIN RELIEF CENTER	3450 E FLETCHER AVENUE 220	33613
ALVERANGA, DENISE & ASSOCIATES	3450 E FLETCHER AVENUE, SUITE 310	33613
JOHN KNOX VILLAGE OF TAMPA BAY	4100 E FLETCHER	33613
ADVANCED DERMATOLOGY AND COSMETIC SURGERY DBA CENT	14521 UNIVERSITY POINT PLACE	33613
AMBULATORY SURGERY CENTER	4500 E FLETCHER AVENUE	33613

Hospitals (Points)

Facility Name	Address	Zip Code
JAMES A HALEY VETERANS HOSPITAL	13000 BRUCE B DOWNS BLVD	33612
NORTHSIDE MENTAL HEALTH	12512 BRUCE B DOWNS BLVD	33612
UNIVERSITY COMMUNITY HOSPITAL	3100 E FLETCHER AVE	33613

Law Enforcement Facilities (Points)

Facility Name	Address	Zip Code
HILLSBOROUGH COUNTY SHERIFF'S OFFICE UNIVERSITY COMMUNITY STATION	2200 FOWLER AVE E	33612
HILLSBOROUGH COUNTY SHERIFF'S OFFICE DISTRICT I	14102 20TH ST N	33613

Mobile Home Parks in Florida

Facility Name	Address	Zip Code
VILLAGE OF TAMPA	1201 E SKIPPER RD	33602
BREEZEWOOD MHP	1701 SKIPPER RD	33613
KUM BACK TP	14011 NEBRASKA AVE	33613
HIDDEN OAKS	707 E 138TH AVE	33613

Public and Private Schools (Points)

Facility Name	Address	Zip Code
FASTTRAIN OF TAMPA	2156 UNIVERSITY SQUARE MALL	33612
BOWERS-WHITLEY CAREER CENTER	13609 N 22ND STREET	33613
MULLER ELEMENTARY SCHOOL	13615 N 22ND STREET	33613
UNIVERSITY COMMUNITY HOSPITAL	3100 E FLETCHER AVE	33613
AMERICAN YOUTH ACADEMY INC.	5905 E 130TH AVENUE	33617

Religious Centers (Points)

Facility Name	Address	Zip Code
UNIVERSITY BAPTIST CHURCH	2121 E 131ST AVENUE	33612
IGLESIA PENTECOSTAL	12811 NEBRASKA AVE N	33612
NORTH 56TH STREET GOSPEL	12811 N 56TH STREET	33617
JESUS IN DOMINION MINISTRIES	11900 N NEBRASKA AVENUE	33612
UNIVERSITY CHURCH OF CHRIST	14314 BRUCE B DOWNS BOULEVARD	33613
IGLESIA DE DIOS PENTECOSTAL	14214 N NEBRASKA AV	33613
REHOBOTH FAITH CATHEDRAL	806 E 131ST AVE	33612
NEW JERUSALEM HAITIAN BAPTIST CHURCH	1912 EAST 139TH AVENUE	33613
PRIMERIA IGLESIA CRISTIANA	12111 N 58TH STREET	33617
MAR GREGORIOS SYRIAN ORTHODOX	12001 N 58TH STREET	33617
CALVARY APOSTOLIC FAITH CHURCH	1204 E 124TH AVE	33612
ST GREGORIOUS ORTHODOX CHURCH	12607 N 58TH STREET	33617
JESUS HOUSE	11731 N 15TH ST	33612
ONE MADE WHOLE BIBLE MINISTRY	12016 N NEBRASKA AV	33612
MISION SANTA MARIA	14004 N 15TH ST	33613
CHURCH OF GOD NORTH	13402 BRUCE B DOWNS BOULEVARD	33612
CROSSPOINTE CHURCH ORLANDO	4309 AVALON SUITES TERRACE	33613
TEMPLO EMMANUEL PENTECOSTAL DE JESUCRISTO	11739 N 15TH ST	33612
UNLIMITED GOSPEL EXPRESSION	12708 N 19TH ST	33612
CHURCH OF JESUS CHRIST OF LATTER DAY SAINTS	4106 E FLETCHER AVE	33613
58TH STREET CHURCH OF CHRIST	12202 N 58TH ST	33617

Social Services (Geocoded)

Facility Name	Address	Zip Code
SALVATION ARMY FLORIDA EMERGENCY DISASTER SERVICES	930 E 139TH AVENUE	33613
THE SALVATION ARMY ADULT REHABILITATION CENTER	13815 N SALVATION ARMY LANE	33613

US Census Places

Facility Name
Temple Terrace
Tampa
University

Veteran Organizations and Facilities (Points)

Facility Name	Address	Zip Code
PARALYZED VETERANS OF AMERICA NATIONAL SERVICE OFFICES	13000 BRUCE B DOWNS BLVD	33613
AMERICAN LEGION POST 334	929 E 139TH AVE	33613
VETERANS AFFAIRS MEDICAL CENTER TAMPA	13000 BRUCE B DOWNS BLVD	33613

Block Groups

The following Census Block Groups were used to calculate demographics for this report.

1990 Census Block Groups

120570108072, 120570108064, 120570108073, 120570108032, 120570110043, 120570108071, 120570108074, 120570108063, 120570108052, 120570108053, 120570108031, 120570112043, 120570108061, 120570108033, 120570108042, 120570108043, 120570108062, 120570108081, 120570110045, 120570110034, 120570109001, 120570108051, 120570108083, 120570108082

2000 Census Block Groups

120570108051, 120570108082, 120570108063, 120570108031, 120570108043, 120570108052, 120570108074, 120570109001, 120570108062, 120570108081, 120570110032, 120570108072, 120570108064, 120570110112, 120570108061, 120570108032, 120570108042, 120570108071, 120570108073, 120570108033, 120570110101

2010 Census Block Groups

120570108051, 120570110102, 120570108122, 120570108142, 120570108133, 120570110154, 120570108113, 120570108111, 120570108181, 120570108163, 120570108162, 120570108152, 120570108112, 120570108161, 120570108151, 120570108052, 120570108053, 120570109001, 120570108172, 120570108183, 120570108082, 120570108131, 120570108134, 120570108121, 120570108182, 120570108141, 120570108132, 120570108171, 120570110032, 120570108081, 120570108091

2015 Census Block Groups

120570108141, 120570108142, 120570108134, 120570108163, 120570108161, 120570108122, 120570108113, 120570108051, 120570110102, 120570108132, 120570108133, 120570108121, 120570110154, 120570108183, 120570108082, 120570108111, 120570108181, 120570108152, 120570108081, 120570108091, 120570108172, 120570108151, 120570108053, 120570108171, 120570110032, 120570109001, 120570108182, 120570108052, 120570108162, 120570108131, 120570108112

Data Sources

Area

The geographic area of the community based on a user-specified community boundary or area of interest (AOI) boundary.

Jurisdiction

Jurisdiction(s) includes local government boundaries that intersect the community or AOI boundary.

Demographic Data

Demographic data reported under the headings General Population Trends, Race and Ethnicity Trends, Age Trends, Income Trends, Educational Attainment Trends, Language Trends, and Housing Trends is from the U.S. Decennial Census (1990, 2000) and the American Community Survey (ACS) 5-year estimates from 2006-2010 and 2011-2015. The data was gathered at the block group level for user-specified community boundaries and AOIs, and at the county level for counties. Depending on the dataset, the data represents 100% counts (Census Summary File 1) or sample-based information (Census Summary File 3 or ACS).

About the Census Data:

User-specified community boundaries and AOIs do not always correspond precisely to block group boundaries. In these instances, adjustment of the geographic area and data for affected block groups is required to estimate the actual population. To improve the accuracy of such estimates in the SDR report, the census block group data was adjusted to exclude all census blocks with a population of two or fewer. These areas were eliminated from the corresponding years' block groups. Next, the portion of the block group that lies outside of the community or AOI boundary was removed. The demographics within each block group were then recalculated, assuming an equal area distribution of the population. Note that there may be areas where there is no population.

Use caution when comparing the 100% count data (Decennial Census) to the sample-based data (ACS). In any given year, about one in 40 or 2.5% of U.S. households will receive the ACS questionnaire. Over any five-year period, about one in eight households will receive the questionnaire, as compared to about one in six that received the long form questionnaire for the Decennial Census 2000. (Source: <http://mcdc.missouri.edu/pub/data/acs/Readme.shtml>) The U.S. Census Bureau provides help with this process:

http://www.census.gov/acs/www/guidance_for_data_users/comparing_2015/

Use caution when interpreting changes in Race and Ethnicity over time. Starting with the 2000 Decennial Census, respondents were given a new option of selecting one or more race categories. Also in 2000, the placement of the question about Hispanic origin changed, helping to increase responsiveness to the Hispanic-origin question. Because of these and other changes, the 1990 data on race and ethnicity are not directly comparable with data from later censuses. (Source: <http://www.census.gov/prod/2001pubs/c2kbr01-1.pdf>;
<http://www.census.gov/pred/www/rpts/Race%20and%20Ethnicity%20FINAL%20report.pdf>)

The "Minority" calculations are derived from Census and ACS data using both the race and ethnicity responses. On this report, "Minority" refers to individuals who list a race other than White and/or list their ethnicity as Hispanic/Latino. In other words, people who are multi-racial, any single race other than White, or Hispanic/Latino of any race are considered minorities.

Disability data is not included in the 2010 Decennial Census, or the 2006-2010 ACS. This data is available in the 2011-2015 ACS.

Because of changes made to the Census and ACS questions between 1990 and 2015, disability variables should not be compared from year to year. For example: 1) With the 1990 data the disabilities are listed as a "work disability" while this distinction is not made with 2000 or 2015 ACS data; 2) The 2015 ACS data includes the institutionalized population (e.g. persons in prisons and group homes), while this population is not included in 1990 or 2000; 3) the age groupings changed over the years.

Please take the following two concerns into account when viewing this data: 1) With the 1990 data the disabilities are listed as a "work disability" while this distinction is not made with 2000 or 2015 ACS data; 2) The 2015 ACS data includes the institutionalized population (e.g. persons in prisons and group homes), while this population is not included in 1990 or 2000.

The category Bachelor's Degree or Higher under the heading Educational Attainment Trends is a subset of the category High School Graduate or Higher.

Income of households. This includes the income of the householder and all other individuals 15 years old and over in the household, whether they are related to the householder or not. Because many households consist of only one person, average household income is usually less than average family income.

Income of families. In compiling statistics on family income, the incomes of all members 15 years old and over related to the householder are summed and treated as a single amount.

Age Trends median age for 1990 is not available.

Land Use Data

The Land Use information Indicates acreages and percentages for the generalized land use types used to group parcel-specific, existing land use assigned by the county property appraiser office according to the Florida Department of Revenue land use codes.

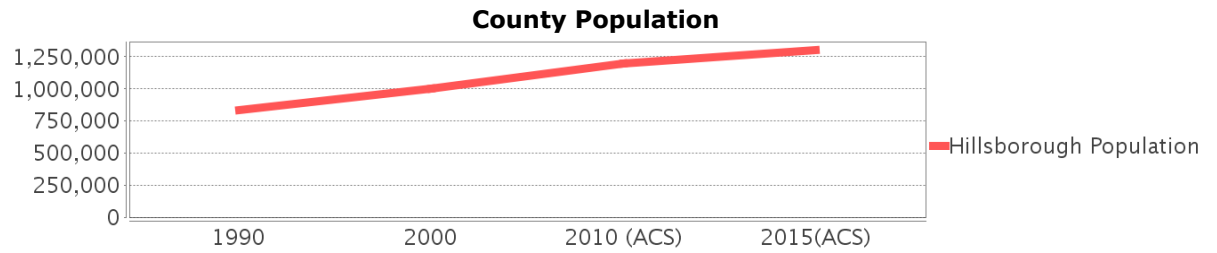
Community Facilities Data

- Assisted Rental Housing Units - Identifies multifamily rental developments that receive funding assistance under federal, state, and local government programs to offer affordable housing as reported by the Shimberg Center for Housing Studies, University of Florida.
- Mobile Home Parks - Identifies approved or acknowledged mobile home parks reported by the Florida Department of Business and Professional Regulation and Florida Department of Health.
- Migrant Camps - Identifies migrant labor camp facilities inspected by the Florida Department of Health.
- Group Care Facilities - Identifies group care facilities inspected by the Florida Department of Health.
- Community Center and Fraternal Association Facilities - Identifies facilities reported by multiple sources.
- Law Enforcement Correctional Facilities - Identifies facilities reported by multiple sources.
- Cultural Centers - Identifies cultural centers including organizations, buildings, or complexes that promote culture and arts (e.g., aquariums and zoological facilities; arboreta and botanical gardens; dinner theaters; drive-ins; historical places and services; libraries; motion picture theaters; museums and art galleries; performing arts centers; performing arts theaters; planetariums; studios and art galleries; and theater producers stage facilities) reported by multiple sources.
- Fire Department and Rescue Station Facilities - Identifies facilities reported by multiple sources.
- Government Buildings - Identifies local, state, and federal government buildings reported by multiple sources.
- Health Care Facilities - Identifies health care facilities including abortion clinics, dialysis clinics, medical doctors, nursing homes, osteopaths, state laboratories/clinics, and surgicenters/walk-in clinics reported by the Florida Department of Health.
- Hospital Facilities - Identifies hospital facilities reported by multiple sources.
- Law Enforcement Facilities - Identifies law enforcement facilities reported by multiple sources.
- Parks and Recreational Facilities - Identifies parks and recreational facilities reported by multiple sources.
- Religious Center Facilities - Identifies religious centers including churches, temples, synagogues, mosques, chapels, centers, and other types of religious facilities reported by multiple sources.
- Private and Public Schools - Identifies private and public schools reported by multiple sources.
- Social Service Centers - Identifies social service centers reported by multiple sources.
- Veteran Organizations and Facilities

Hillsborough County Demographic Profile

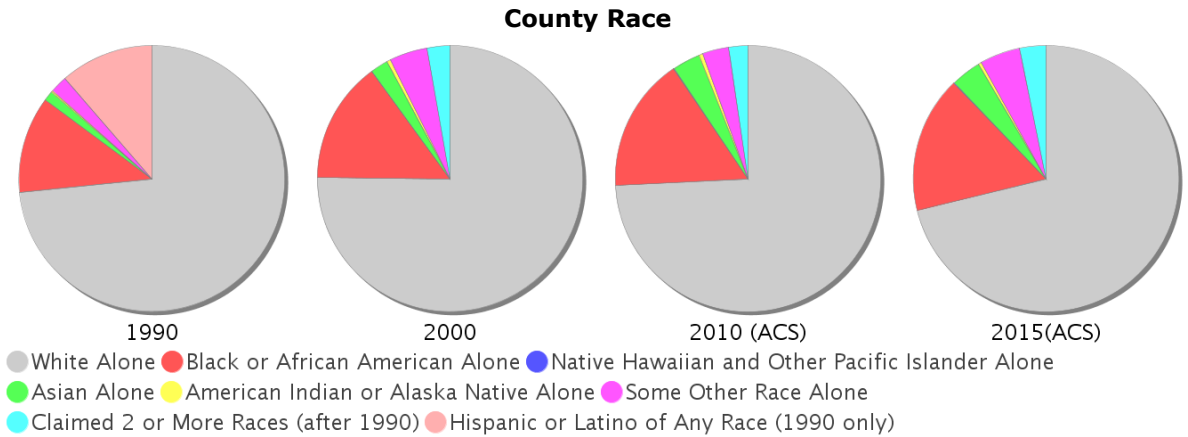
General Population Trends - Hillsborough

Description	1990	2000	2010 (ACS)	2015(ACS)
Total Population	834,054	998,948	1,200,236	1,302,884
Total Households	324,872	391,357	462,447	486,078
Average Persons per Acre	1.216	1.458	1.751	1.90
Average Persons per Household	2.567	2.508	3.00	2.64
Average Persons per Family	3.106	3.156	3.262	3.375
Males	406,217	488,596	585,512	635,632
Females	427,837	510,352	614,724	667,252



Race and Ethnicity Trends - Hillsborough

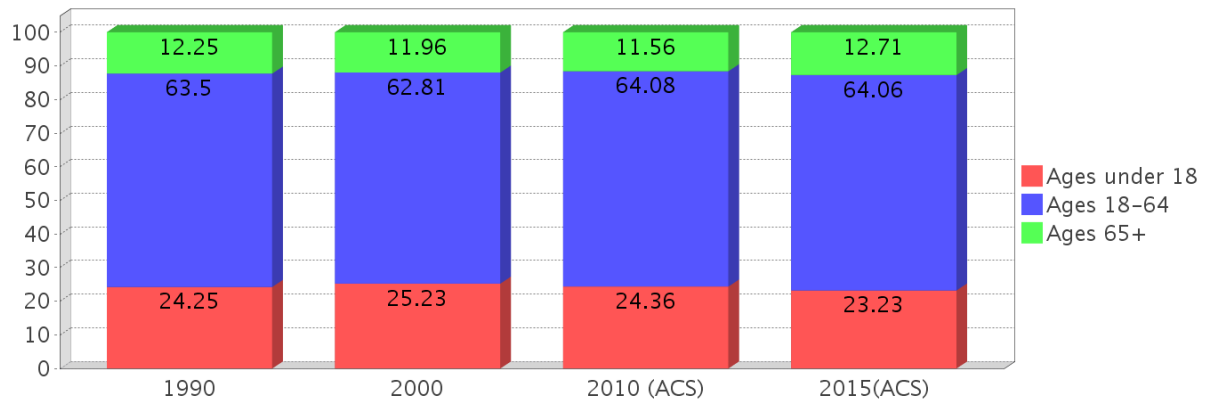
Description	1990	2000	2010 (ACS)	2015(ACS)
White Alone	690,352 (82.77%)	750,497 (75.13%)	890,392 (74.18%)	926,752 (71.13%)
Black or African American Alone	110,283 (13.22%)	147,966 (14.81%)	196,352 (16.36%)	216,735 (16.64%)
Native Hawaiian and Other Pacific Islander Alone	(NA)	540 (0.05%)	773 (0.06%)	1,061 (0.08%)
Asian Alone	11,093 (1.33%)	21,571 (2.16%)	40,285 (3.36%)	48,093 (3.69%)
American Indian or Alaska Native Alone	2,454 (0.29%)	4,175 (0.42%)	5,523 (0.46%)	4,665 (0.36%)
Some Other Race Alone	19,586 (2.35%)	46,587 (4.66%)	39,276 (3.27%)	64,340 (4.94%)
Claimed 2 or More Races	(NA)	27,612 (2.76%)	27,635 (2.30%)	41,238 (3.17%)
Hispanic or Latino of Any Race	106,908 (12.82%)	179,637 (17.98%)	286,394 (23.86%)	339,540 (26.06%)
Not Hispanic or Latino	727,146 (87.18%)	819,311 (82.02%)	913,842 (76.14%)	963,344 (73.94%)
Minority	568,661 (68.18%)	366,644 (36.70%)	568,661 (47.38%)	627,917 (48.19%)



Age Trends - Hillsborough

Description	1990	2000	2010 (ACS)	2015(ACS)
Under Age 5	7.30%	6.77%	6.70%	6.39%
Ages 5-17	16.95%	18.46%	17.66%	16.84%
Ages 18-21	5.96%	5.33%	5.91%	5.71%
Ages 22-29	14.20%	11.31%	11.83%	11.72%
Ages 30-39	17.39%	16.38%	13.93%	13.78%
Ages 40-49	12.95%	15.22%	15.18%	14.09%
Ages 50-64	13.00%	14.57%	17.23%	18.77%
Age 65 and Over	12.25%	11.96%	11.56%	12.71%
-Ages 65-74	7.41%	6.46%	6.21%	7.19%
-Ages 75-84	3.83%	4.20%	3.87%	3.87%
-Age 85 and Over	1.00%	1.29%	1.48%	1.65%
Median Age	NA	35	36	37

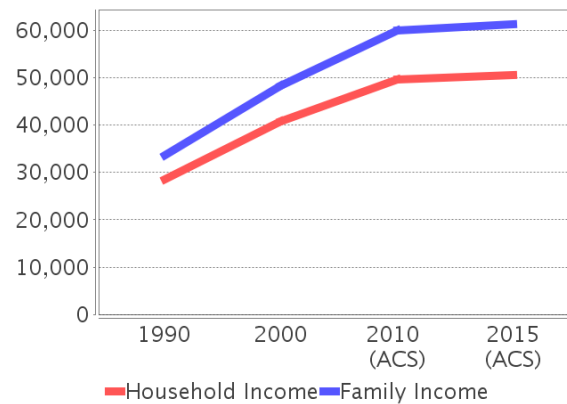
Percentage Population by Age Group



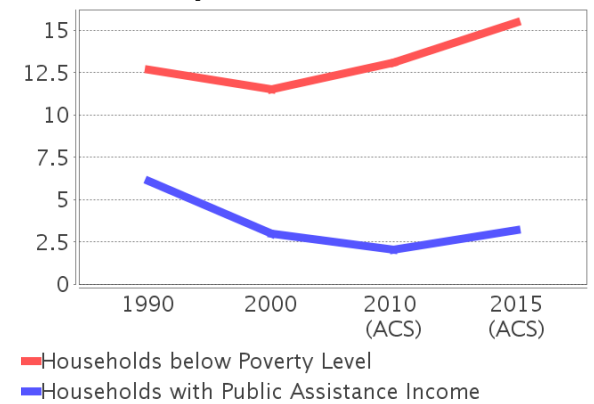
Income Trends - Hillsborough

Description	1990	2000	2010 (ACS)	2015(ACS)
Median Household Income	\$28,477	\$40,663	\$49,536	\$50,579
Median Family Income	\$33,645	\$48,223	\$59,886	\$61,262
Population below Poverty Level	13.29%	12.51%	14.17%	16.97%
Households below Poverty Level	12.66%	11.50%	13.11%	15.45%
Households with Public Assistance Income	6.07%	3.01%	2.06%	3.18%

Income Trends



Poverty and Public Assistance



Disability Trends - Hillsborough

See the Data Sources section below for an explanation about the differences in disability data among the various years.

Description	1990	2000	2010 (ACS)	2015(ACS)
Population 16 To 64 Years with a disability	48,345 (7.57%)	136,465 (14.85%)	NA (NA)	NA (NA)
Population 20 To 64 Years with a disability	NA (NA)	NA (NA)	NA (NA)	79,106 (9.96%)

Educational Attainment Trends - Hillsborough

Age 25 and Over

Description	1990	2000	2010 (ACS)	2015(ACS)
Less than 9th Grade	48,247	41,209	41,965	43,073
9th to 12th Grade, No Diploma	84,751	84,574	69,127	66,133
High School Graduate or Higher	412,022	528,058	672,988	762,685
Bachelor's Degree or Higher	110,070	164,109	226,113	266,437

Language Trends - Hillsborough

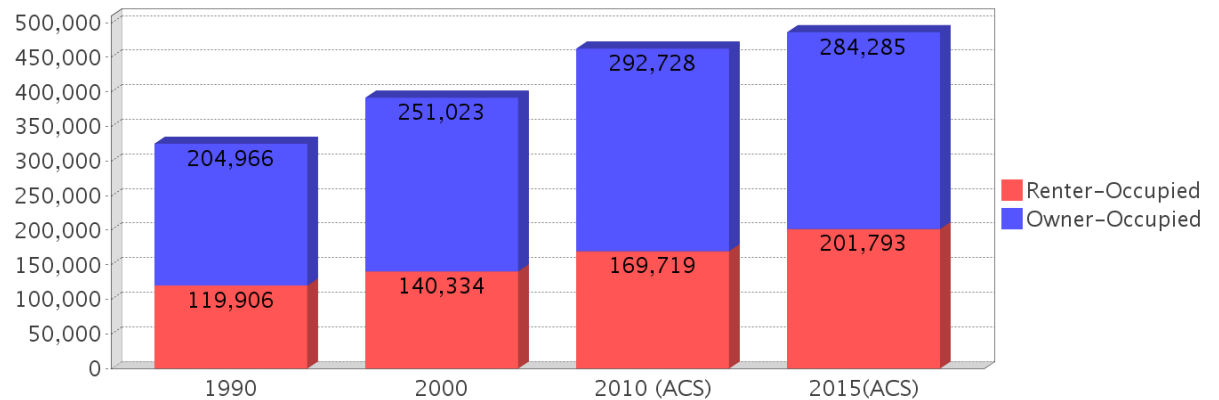
Age 5 and Over

Description	1990	2000	2010 (ACS)	2015(ACS)
Speaks English Well	23,611	39,227	54,355	50,719
Speaks English Not Well	NA	28,250	39,803	44,487
Speaks English Not at All	NA	13,819	19,950	24,627
Speaks English Not Well or Not at All	20,956	42,069	59,753	69,114

Housing Trends - Hillsborough

Description	1990	2000	2010 (ACS)	2015(ACS)
Total	367,740	425,962	526,016	549,024
Units per Acre	0.536	0.622	0.768	0.80
Single-Family Units	200,373	260,157	330,155	345,207
Multi-Family Units	87,418	122,837	153,087	161,555
Mobile Home Units	34,499	42,063	42,158	41,562
Owner-Occupied Units	204,966	251,023	292,728	284,285
Renter-Occupied Units	119,906	140,334	169,719	201,793
Vacant Units	42,868	34,605	63,569	62,946
Median Housing Value	\$72,400	\$91,800	\$198,900	\$159,200
Occupied Housing Units w/No Vehicle	28,289 (8.71%)	31,680 (8.09%)	30,440 (6.58%)	34,742 (7.15%)

Housing Tenure



County Data Sources

Demographic data reported is from the U.S. Decennial Census (1990, 2000) and the American Community Survey (ACS) 5-year estimates from 2006-2010 and 2011-2015. The data was gathered at the county level. Depending on the dataset, the data represents 100% counts (Census Summary File 1) or sample-based information (Census Summary File 3 or ACS).

About the Census Data:

Use caution when comparing the 100% count data (Decennial Census) to the sample-based data (ACS). In any given year, about one in 40 or 2.5% of U.S. households will receive the ACS questionnaire. Over any five-year period, about one in eight households will receive the questionnaire, as compared to about one in six that received the long form questionnaire for the Decennial Census 2000. (Source: <http://mcdc.missouri.edu/pub/data/acs/Readme.shtml>) The U.S. Census Bureau provides help with this process:

http://www.census.gov/acs/www/guidance_for_data_users/comparing_2015/

Use caution when interpreting changes in Race and Ethnicity over time. Starting with the 2000 Decennial Census, respondents were given a new option of selecting one or more race categories. Also in 2000, the placement of the question about Hispanic origin changed, helping to increase responsiveness to the Hispanic-origin question. Because of these and other changes, the 1990 data on race and ethnicity are not directly comparable with data from later censuses. (Source: <http://www.census.gov/prod/2001pubs/c2kbr01-1.pdf>;
<http://www.census.gov/pred/www/rpts/Race%20and%20Ethnicity%20FINAL%20report.pdf>)

The "Minority" calculations are derived from Census and ACS data using both the race and ethnicity responses. On this report, "Minority" refers to individuals who list a race other than White and/or list their ethnicity as Hispanic/Latino. In other words, people who are multi-racial, any single race other than White, or Hispanic/Latino of any race are considered minorities.

Disability data is not included in the 2010 Decennial Census, or the 2006-2010 ACS. This data is available in the 2011-2015 ACS.

Because of changes made to the Census and ACS questions between 1990 and 2015, disability variables should not be compared from year to year. For example: 1) With the 1990 data the disabilities are listed as a "work disability" while this distinction is not made with 2000 or 2015 ACS data; 2) The 2015 ACS data includes the institutionalized population (e.g. persons in prisons and group homes), while this population is not included in 1990 or 2000; 3) the age groupings changed over the years.

Please take the following two concerns into account when viewing this data: 1) With the 1990 data the disabilities are listed as a "work disability" while this distinction is not made with 2000 or 2015 ACS data; 2) The 2015 ACS data includes the institutionalized population (e.g. persons in prisons and group homes), while this population is not included in 1990 or 2000.

source:

<https://www.census.gov/people/disability/methodology/acs.html>

<https://www.census.gov/population/www/cen2000/90vs00/index.html>

The category Bachelor's Degree or Higher under the heading Educational Attainment Trends is a subset of the category High School Graduate or Higher.

Metadata

- Community and Fraternal Centers https://etdmpub.florida-etat.org/metadata/gc_communitycenter.htm
- Correctional Facilities in Florida https://etdmpub.florida-etat.org/metadata/gc_correctional.htm
- Cultural Centers in Florida https://etdmpub.florida-etat.org/metadata/gc_culturecenter.htm
- Fire Department and Rescue Station Facilities in Florida https://etdmpub.florida-etat.org/metadata/gc_firestat.htm
- Local, State, and Federal Government Buildings in Florida https://etdmpub.florida-etat.org/metadata/gc_govbuild.htm
- Florida Health Care Facilities https://etdmpub.florida-etat.org/metadata/gc_health.htm
- Hospital Facilities in Florida https://etdmpub.florida-etat.org/metadata/gc_hospitals.htm
- Law Enforcement Facilities in Florida https://etdmpub.florida-etat.org/metadata/gc_lawenforce.htm
- Florida Parks and Recreational Facilities https://etdmpub.florida-etat.org/metadata/gc_parks.htm
- Religious Centers https://etdmpub.florida-etat.org/metadata/gc_religion.htm
- Florida Public and Private Schools https://etdmpub.florida-etat.org/metadata/gc_schools.htm
- Social Service Centers https://etdmpub.florida-etat.org/metadata/gc_socialservice.htm
- Assisted Rental Housing Units in Florida https://etdmpub.florida-etat.org/metadata/gc_assisted_housing.htm
- Group Care Facilities <https://etdmpub.florida-etat.org/metadata/groupcare.htm>
- Mobile Home Parks in Florida https://etdmpub.florida-etat.org/metadata/gc_mobilehomes.htm
- Migrant Camps in Florida <https://etdmpub.florida-etat.org/metadata/migrant.htm>
- Veteran Organizations and Facilities https://etdmpub.florida-etat.org/metadata/gc_veterans.htm
- Generalized Land Use - Florida DOT District 7 https://etdmpub.florida-etat.org/metadata/d7_lu_gen.htm
- Census Block Groups in Florida https://etdmpub.florida-etat.org/metadata/e2_cenacs_cci.htm
- 1990 Census Block Groups in Florida https://etdmpub.florida-etat.org/metadata/e2_cenblkgrp_1990_cci.htm
- 2000 Census Block Groups in Florida https://etdmpub.florida-etat.org/metadata/e2_cenblkgrp_2000_cci.htm
- 2010 Census Block Groups in Florida https://etdmpub.florida-etat.org/metadata/e2_cenblkgrp_2010_cci.htm