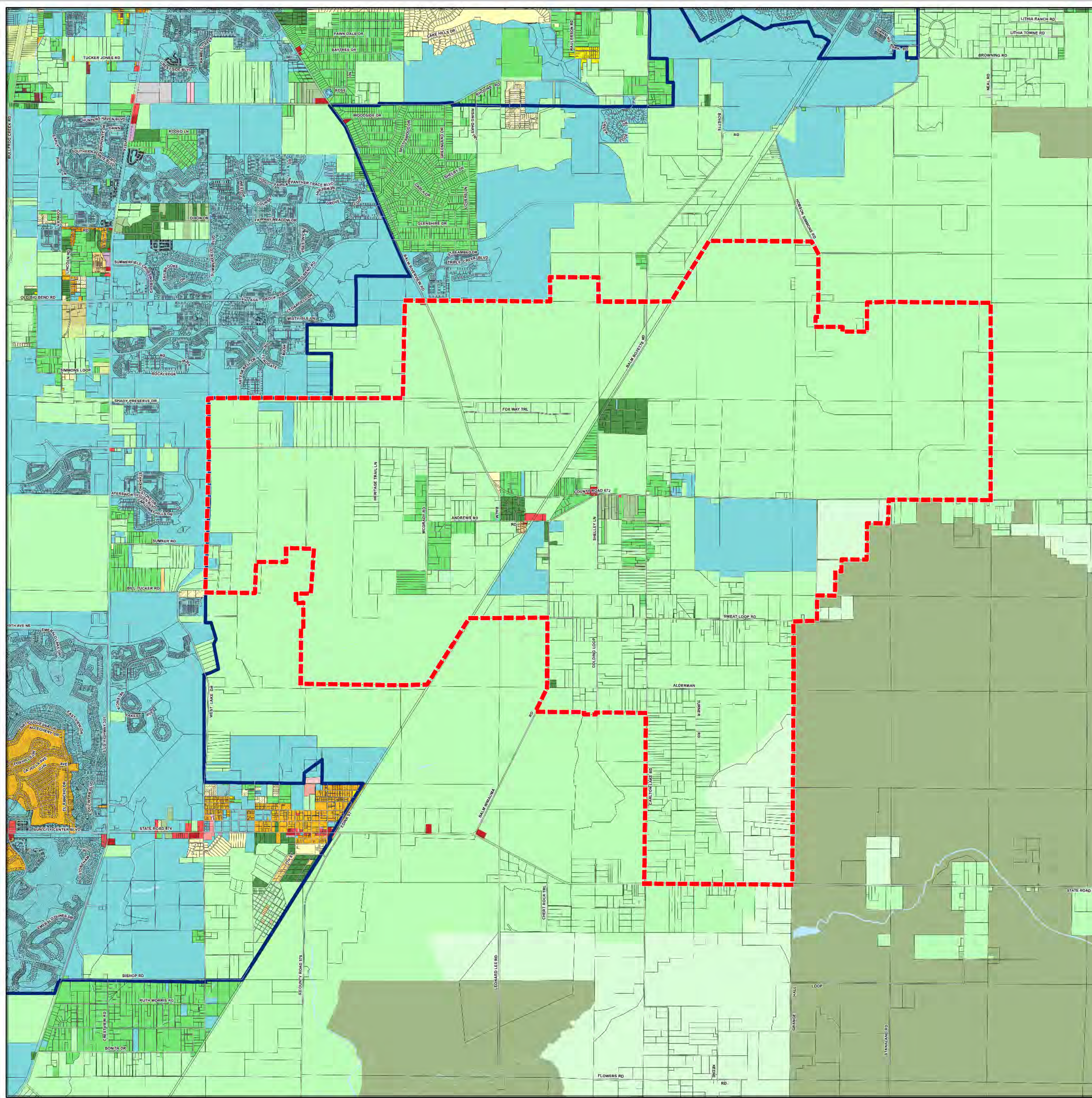


BALM COMMUNITY PLAN

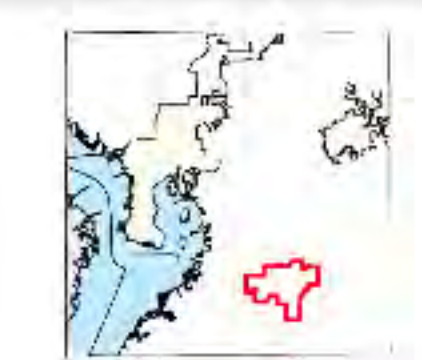
HILLSBOROUGH COUNTY ZONING

LEGEND

- BALM COMMUNITY PLAN BOUNDARY
- Zoning Districts**
- Agricultural**
 - A Agricultural
 - AR Agricultural, Rural
 - AS-0.4 Agricultural, Single-Family Estate - 1 RU/2.5 Ac
 - AS-1 Agricultural, Single-Family - 1 RU/1 Ac
 - ASC-1 Agricultural, Single-Family Convent-1 - 1 RU/1 Ac
 - AI Agricultural, Industrial
 - AM Agricultural, Mining
- Commercial/Office/Industrial**
 - OR Office Residential
 - BPD Business, Professional Office
 - CN Commercial, Neighborhood
 - CG Commercial, General
 - CI Commercial, Intensive
 - M Manufacturing
- Community-Based Plans**
 - BMS Brandon Main Street - 7 Districts
 - CPV Citrus Park Village - 43 Districts
 - LDC Lutz Downtown Center
 - RTC Ruskin Town Center - 2 Districts
 - UCA University Community Area - 4 Districts
- Planned Development**
 - PD Planned Development
 - IPD-1 Interstate Planned Development
 - IPD-2 Interstate Planned Development
 - IPD-3 Interstate Planned Development
 - TND Traditional Neighborhood Development
- Special Public Interest**
 - SPH-C Historic and Cultural Conservation
 - SPHAP-1 Airport
 - SPHAP-2 Airport
 - SPHAP-3 Airport
 - SPHAP-4 Airport
 - SPHAP-5 Airport
 - SPHAP-6 Airport
 - SPHAP-7 Airport
 - SPHAP-8 Airport
 - SPHAP-9 Airport
 - SPHAP-10 Airport
 - SPHAP-11 Airport
 - SPHAP-12 Airport
 - SPHAP-13 Airport
 - SPHAP-14 Airport
 - SPHAP-15 Airport
 - SPHAP-16 Airport
 - SPHAP-17 Airport
 - SPHAP-18 Airport
 - SPHAP-19 Airport
 - SPHAP-20 Airport
 - SPHAP-21 Airport
 - SPHAP-22 Airport
 - SPHAP-23 Airport
 - SPHAP-24 Airport
 - SPHAP-25 Airport
 - SPHAP-26 Airport
 - SPHAP-27 Airport
 - SPHAP-28 Airport
 - SPHAP-29 Airport
 - SPHAP-30 Airport
 - SPHAP-31 Airport
 - SPHAP-32 Airport
 - SPHAP-33 Airport
 - SPHAP-34 Airport
 - SPHAP-35 Airport
 - SPHAP-36 Airport
 - SPHAP-37 Airport
 - SPHAP-38 Airport
 - SPHAP-39 Airport
 - SPHAP-40 Airport
 - SPHAP-41 Airport
 - SPHAP-42 Airport
 - SPHAP-43 Airport
 - SPHAP-44 Airport
 - SPHAP-45 Airport
 - SPHAP-46 Airport
 - SPHAP-47 Airport
 - SPHAP-48 Airport
 - SPHAP-49 Airport
 - SPHAP-50 Airport
 - SPHAP-51 Airport
 - SPHAP-52 Airport
 - SPHAP-53 Airport
 - SPHAP-54 Airport
 - SPHAP-55 Airport
 - SPHAP-56 Airport
 - SPHAP-57 Airport
 - SPHAP-58 Airport
 - SPHAP-59 Airport
 - SPHAP-60 Airport
 - SPHAP-61 Airport
 - SPHAP-62 Airport
 - SPHAP-63 Airport
 - SPHAP-64 Airport
 - SPHAP-65 Airport
 - SPHAP-66 Airport
 - SPHAP-67 Airport
 - SPHAP-68 Airport
 - SPHAP-69 Airport
 - SPHAP-70 Airport
 - SPHAP-71 Airport
 - SPHAP-72 Airport
 - SPHAP-73 Airport
 - SPHAP-74 Airport
 - SPHAP-75 Airport
 - SPHAP-76 Airport
 - SPHAP-77 Airport
 - SPHAP-78 Airport
 - SPHAP-79 Airport
 - SPHAP-80 Airport
 - SPHAP-81 Airport
 - SPHAP-82 Airport
 - SPHAP-83 Airport
 - SPHAP-84 Airport
 - SPHAP-85 Airport
 - SPHAP-86 Airport
 - SPHAP-87 Airport
 - SPHAP-88 Airport
 - SPHAP-89 Airport
 - SPHAP-90 Airport
 - SPHAP-91 Airport
 - SPHAP-92 Airport
 - SPHAP-93 Airport
 - SPHAP-94 Airport
 - SPHAP-95 Airport
 - SPHAP-96 Airport
 - SPHAP-97 Airport
 - SPHAP-98 Airport
 - SPHAP-99 Airport
 - SPHAP-100 Airport
- Residential**
 - RSC-2 Single-Family Convent-1 - 2 U/1 Ac
 - RSC-3 Single-Family Convent-1 - 3 U/1 Ac
 - RSC-4 Single-Family Convent-1 - 4 U/1 Ac
 - RSC-5 Single-Family Convent-1 - 5 U/1 Ac
 - RSC-6 Single-Family Convent-1 - 6 U/1 Ac
 - RSC-7 Single-Family Convent-1 - 7 U/1 Ac
 - RSC-8 Single-Family Convent-1 - 8 U/1 Ac
 - RSC-9 Single-Family Convent-1 - 9 U/1 Ac
 - RSC-10 Single-Family Convent-1 - 10 U/1 Ac
 - RSC-11 Single-Family Convent-1 - 11 U/1 Ac
 - RSC-12 Single-Family Convent-1 - 12 U/1 Ac
 - RSC-13 Single-Family Convent-1 - 13 U/1 Ac
 - RSC-14 Single-Family Convent-1 - 14 U/1 Ac
 - RSC-15 Single-Family Convent-1 - 15 U/1 Ac
 - RSC-16 Single-Family Convent-1 - 16 U/1 Ac
 - RSC-17 Single-Family Convent-1 - 17 U/1 Ac
 - RSC-18 Single-Family Convent-1 - 18 U/1 Ac
 - RSC-19 Single-Family Convent-1 - 19 U/1 Ac
 - RSC-20 Single-Family Convent-1 - 20 U/1 Ac
 - RSC-21 Single-Family Convent-1 - 21 U/1 Ac
 - RSC-22 Single-Family Convent-1 - 22 U/1 Ac
 - RSC-23 Single-Family Convent-1 - 23 U/1 Ac
 - RSC-24 Single-Family Convent-1 - 24 U/1 Ac
 - RSC-25 Single-Family Convent-1 - 25 U/1 Ac
 - RSC-26 Single-Family Convent-1 - 26 U/1 Ac
 - RSC-27 Single-Family Convent-1 - 27 U/1 Ac
 - RSC-28 Single-Family Convent-1 - 28 U/1 Ac
 - RSC-29 Single-Family Convent-1 - 29 U/1 Ac
 - RSC-30 Single-Family Convent-1 - 30 U/1 Ac
 - RSC-31 Single-Family Convent-1 - 31 U/1 Ac
 - RSC-32 Single-Family Convent-1 - 32 U/1 Ac
 - RSC-33 Single-Family Convent-1 - 33 U/1 Ac
 - RSC-34 Single-Family Convent-1 - 34 U/1 Ac
 - RSC-35 Single-Family Convent-1 - 35 U/1 Ac
 - RSC-36 Single-Family Convent-1 - 36 U/1 Ac
 - RSC-37 Single-Family Convent-1 - 37 U/1 Ac
 - RSC-38 Single-Family Convent-1 - 38 U/1 Ac
 - RSC-39 Single-Family Convent-1 - 39 U/1 Ac
 - RSC-40 Single-Family Convent-1 - 40 U/1 Ac
 - RSC-41 Single-Family Convent-1 - 41 U/1 Ac
 - RSC-42 Single-Family Convent-1 - 42 U/1 Ac
 - RSC-43 Single-Family Convent-1 - 43 U/1 Ac
 - RSC-44 Single-Family Convent-1 - 44 U/1 Ac
 - RSC-45 Single-Family Convent-1 - 45 U/1 Ac
 - RSC-46 Single-Family Convent-1 - 46 U/1 Ac
 - RSC-47 Single-Family Convent-1 - 47 U/1 Ac
 - RSC-48 Single-Family Convent-1 - 48 U/1 Ac
 - RSC-49 Single-Family Convent-1 - 49 U/1 Ac
 - RSC-50 Single-Family Convent-1 - 50 U/1 Ac
 - RSC-51 Single-Family Convent-1 - 51 U/1 Ac
 - RSC-52 Single-Family Convent-1 - 52 U/1 Ac
 - RSC-53 Single-Family Convent-1 - 53 U/1 Ac
 - RSC-54 Single-Family Convent-1 - 54 U/1 Ac
 - RSC-55 Single-Family Convent-1 - 55 U/1 Ac
 - RSC-56 Single-Family Convent-1 - 56 U/1 Ac
 - RSC-57 Single-Family Convent-1 - 57 U/1 Ac
 - RSC-58 Single-Family Convent-1 - 58 U/1 Ac
 - RSC-59 Single-Family Convent-1 - 59 U/1 Ac
 - RSC-60 Single-Family Convent-1 - 60 U/1 Ac
 - RSC-61 Single-Family Convent-1 - 61 U/1 Ac
 - RSC-62 Single-Family Convent-1 - 62 U/1 Ac
 - RSC-63 Single-Family Convent-1 - 63 U/1 Ac
 - RSC-64 Single-Family Convent-1 - 64 U/1 Ac
 - RSC-65 Single-Family Convent-1 - 65 U/1 Ac
 - RSC-66 Single-Family Convent-1 - 66 U/1 Ac
 - RSC-67 Single-Family Convent-1 - 67 U/1 Ac
 - RSC-68 Single-Family Convent-1 - 68 U/1 Ac
 - RSC-69 Single-Family Convent-1 - 69 U/1 Ac
 - RSC-70 Single-Family Convent-1 - 70 U/1 Ac
 - RSC-71 Single-Family Convent-1 - 71 U/1 Ac
 - RSC-72 Single-Family Convent-1 - 72 U/1 Ac
 - RSC-73 Single-Family Convent-1 - 73 U/1 Ac
 - RSC-74 Single-Family Convent-1 - 74 U/1 Ac
 - RSC-75 Single-Family Convent-1 - 75 U/1 Ac
 - RSC-76 Single-Family Convent-1 - 76 U/1 Ac
 - RSC-77 Single-Family Convent-1 - 77 U/1 Ac
 - RSC-78 Single-Family Convent-1 - 78 U/1 Ac
 - RSC-79 Single-Family Convent-1 - 79 U/1 Ac
 - RSC-80 Single-Family Convent-1 - 80 U/1 Ac
 - RSC-81 Single-Family Convent-1 - 81 U/1 Ac
 - RSC-82 Single-Family Convent-1 - 82 U/1 Ac
 - RSC-83 Single-Family Convent-1 - 83 U/1 Ac
 - RSC-84 Single-Family Convent-1 - 84 U/1 Ac
 - RSC-85 Single-Family Convent-1 - 85 U/1 Ac
 - RSC-86 Single-Family Convent-1 - 86 U/1 Ac
 - RSC-87 Single-Family Convent-1 - 87 U/1 Ac
 - RSC-88 Single-Family Convent-1 - 88 U/1 Ac
 - RSC-89 Single-Family Convent-1 - 89 U/1 Ac
 - RSC-90 Single-Family Convent-1 - 90 U/1 Ac
 - RSC-91 Single-Family Convent-1 - 91 U/1 Ac
 - RSC-92 Single-Family Convent-1 - 92 U/1 Ac
 - RSC-93 Single-Family Convent-1 - 93 U/1 Ac
 - RSC-94 Single-Family Convent-1 - 94 U/1 Ac
 - RSC-95 Single-Family Convent-1 - 95 U/1 Ac
 - RSC-96 Single-Family Convent-1 - 96 U/1 Ac
 - RSC-97 Single-Family Convent-1 - 97 U/1 Ac
 - RSC-98 Single-Family Convent-1 - 98 U/1 Ac
 - RSC-99 Single-Family Convent-1 - 99 U/1 Ac
 - RSC-100 Single-Family Convent-1 - 100 U/1 Ac
- Zoning Overlay Districts**
- OVERLAY**
 - Location-based Overlays
 - MH or SB
- Boundary Lines**
 - County Boundary
 - Jurisdiction Boundary
 - Tampa Service Area
 - Urban Service Area



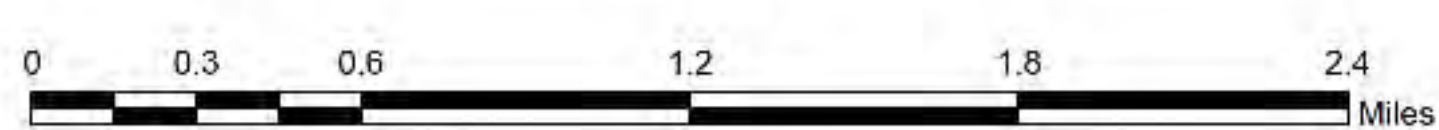
LOCATOR MAP



CRDHS

ZONING: Hillsborough County
 URBAN SERVICE AREA IDENTIFIERS: Hillsborough County City-County Planning Commission. (T/E) (E) (N) (S) (W)
 ACCURACY: It is intended that the accuracy of the base map comply with U.S. map accuracy standards. However, such accuracy is not guaranteed by the Hillsborough County City-County Planning Commission.
 REPRODUCTION: This sheet may not be reproduced in part or full for any use without specific approval of the Hillsborough County City-County Planning Commission.

REFERENCE INFORMATION



AUTHOR: C. WELSH
 DATE: 10/2/2012
 PROJECT: G:\gisroot\Projects\Cathy\Arcmap\Unincorporated_Community_Plans\BalmCommunityPlan_ZONING.mxd



For more information about our organization visit website: www.theplanningcommission.org