

# Hillsborough County MPO 2035 Long Range Transportation Plan Map 10-6 2025 Highway Interim



Hillsborough County MPO  
County Center, 601 E. Kennedy Blvd., 18th Fl.  
P.O. Box 1110 Tampa, Florida 33601-1110  
813 - 272 - 5940 / 813 - 301 - 7172 fax  
www.hillsboroughmopo.org



## Legend

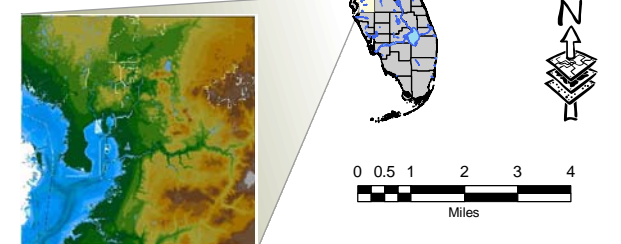
- LANEAGE**
- 2 Lanes - Planned Projects (after 2014)
  - 2 Lanes - Committed Projects (by 2014)
  - 4 Lanes - Planned Projects (after 2014)
  - 4 Lanes - Committed Projects (by 2014)
  - 6 Lanes - Planned Projects (after 2014)
  - 6 Lanes - Committed Projects (by 2014)
  - 8 Lanes - Planned Projects (after 2014)
  - 8 Lanes - Committed Projects (by 2014)
  - 10 Lanes - Planned Projects (after 2014)
  - 10 Lanes - Committed Projects (by 2014)
  - 12 Lanes - Planned Projects (after 2014)
  - 2 Lanes Enhanced - Planned Projects (after 2014)
  - 2 Lanes Enhanced - Committed Projects (by 2014)
  - 3 Lanes Enhanced - Planned Projects (after 2014)
  - 4 Lanes Enhanced - Planned Project (after 2014)
  - 6 Lanes Enhanced - Planned Projects (after 2014)
  - 6 Lanes Enhanced - Committed Projects (by 2014)
  - Managed Lanes

**AMENDED:  
January 4, 2011**

- Urban Service Area
- Hillsborough County
- Pinellas County
- Tampa
- Plant City
- Temple Terrace
- Water and Bay
- Streams/Rivers
- County Boundary
- Major Roads
- Airports
- Airfields

## Locator Map

Hillsborough County 2035 L RTP  
2025 Highway Interim  
December 7, 2010

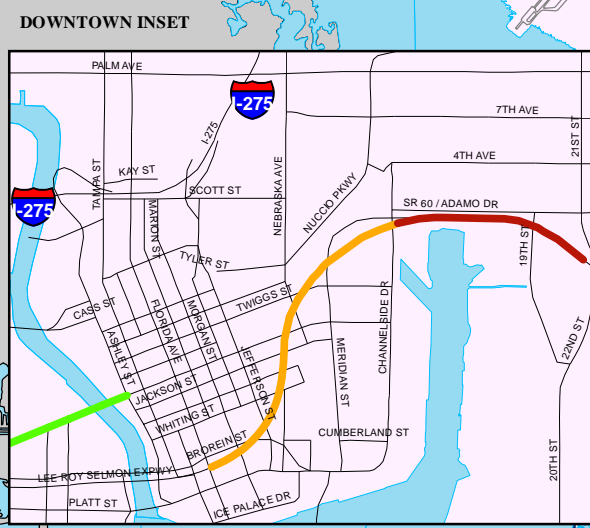
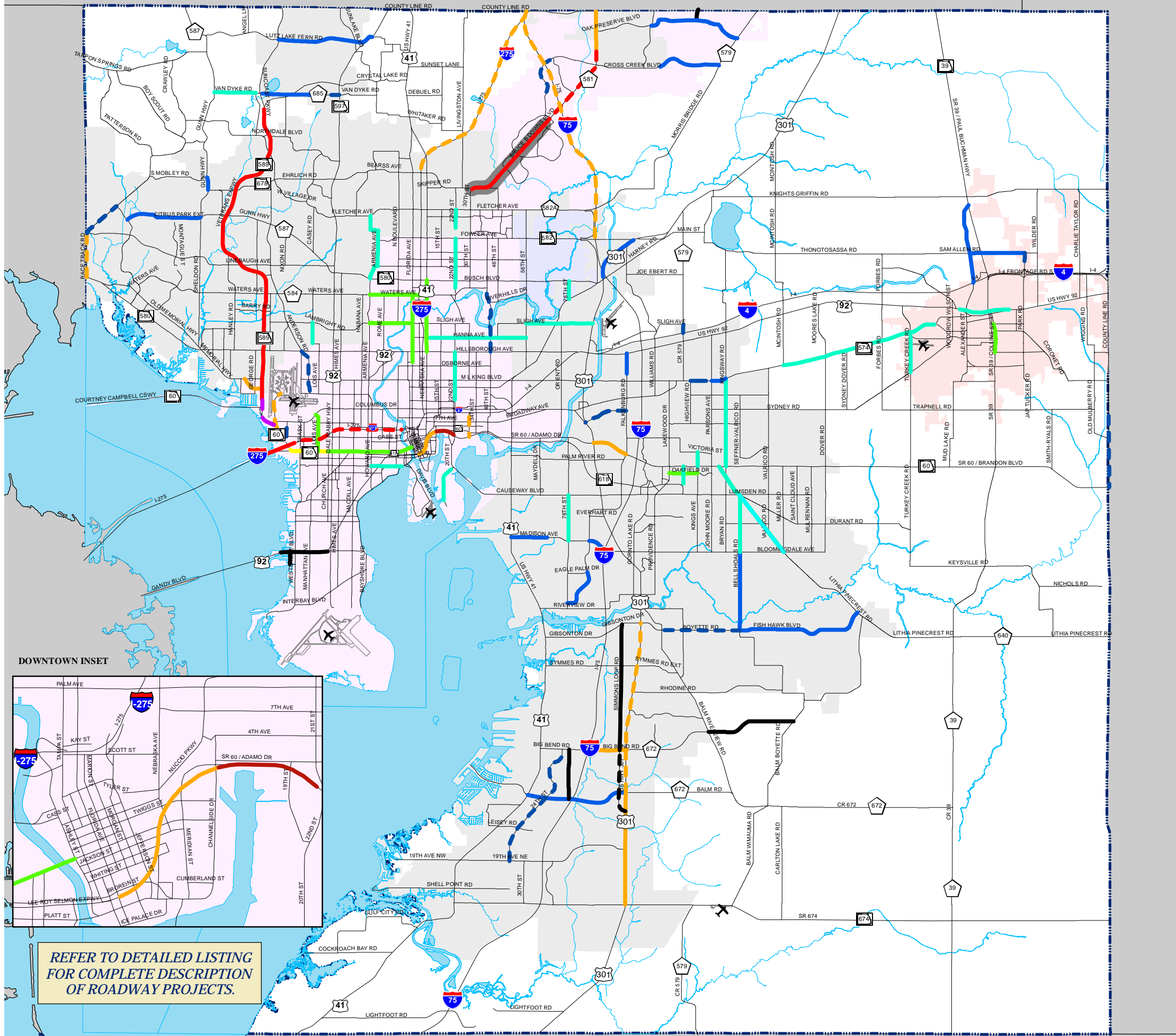


DATA SOURCES : Basemap, roads, water from Hillsborough County City-County Planning Commission. Parcel Lines and data from Hillsborough County Property Appraiser. Wetlands from SWFWMD. Significant Wildlife Habitat from Planning and Development Management, based on satellite imagery. Only wetlands greater than 40 acres depicted.

REPRODUCTION : This sheet may not be reproduced in part or full for sale to anyone without specific approval of the Hillsborough County City-County Planning Commission.

ACCURACY : It is intended that the accuracy of the basemap comply with U.S. National Map accuracy standards. However, such accuracy is not guaranteed by the Hillsborough County City-County Planning Commission. This map for illustrative purposes only. For the most current data and information, see the appropriate source.

File Location : G:\gis\mop\2035 L RTP\Highways\Map 10-6 11x17 2035 L RTP 2025 Highway Interim.mxd  
Author : Roger W. Mathie - GIS Analyst



**REFER TO DETAILED LISTING  
FOR COMPLETE DESCRIPTION  
OF ROADWAY PROJECTS.**