

BALM COMMUNITY PLAN

EXISTING LAND USE

LEGEND

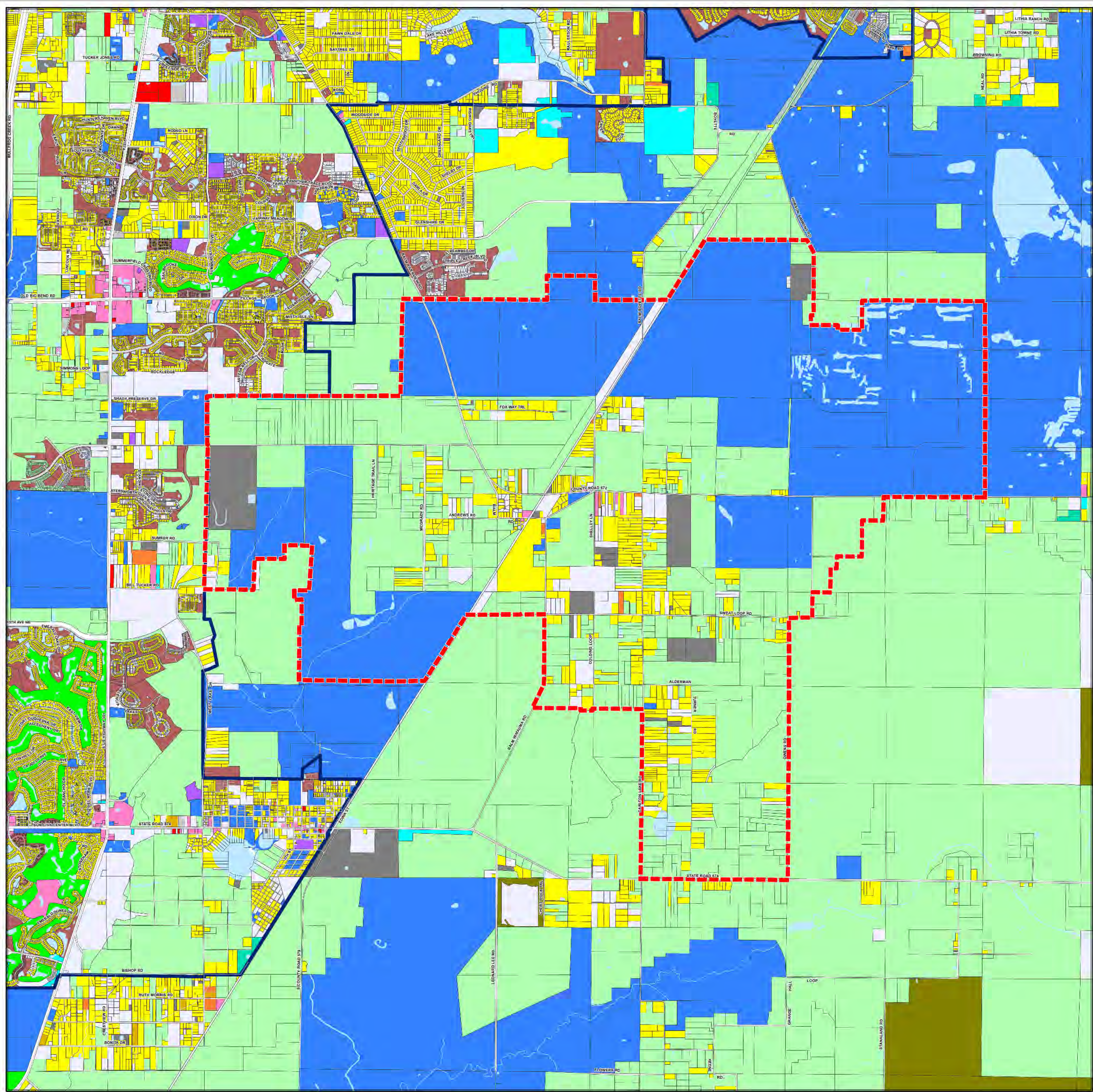
 BALM COMMUNITY PLAN BOUNDARY

EXISTING LAND USE

-  SINGLE FAMILY / MOBILE HOME
-  TWO FAMILY
-  MULTI-FAMILY
-  MOBILE HOME PARK
-  VACANT
-  PUBLIC / QUASIPUBLIC / INSTITUTIONS
-  PUBLIC COMMUNICATIONS / UTILITIES
-  RIGHT OF WAY/ROADS/HIGHWAYS
-  EDUCATIONAL
-  HEAVY COMMERCIAL
-  LIGHT COMMERCIAL
-  HIGH INDUSTRIAL
-  LIGHT INDUSTRIAL
-  MINING
-  RECREATION / OPEN SPACE
-  AGRICULTURAL
-  NATURAL
-  WATER
-  UNKNOWN
-  NOT CLASSIFIED

BOUNDARY LINES

-  COUNTY BOUNDARY
-  JURISDICTION BOUNDARY
-  TAMPA SERVICE AREA
-  URBAN SERVICE AREA



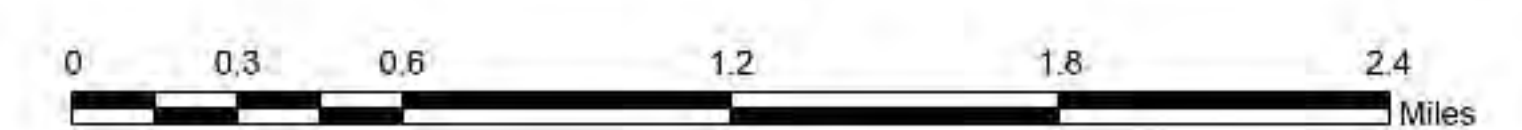
LOCATOR MAP



CRDHS

EXISTING LAND USE: Hillsborough County City-County Planning Commission. Derived from Hillsborough County Property Appraiser FOR Data: Parcel to parcel.
 URBAN SERVICE AREA BOUNDARIES: Hillsborough County City-County Planning Commission. Effective to present.
 ACCURACY: It is intended that the accuracy of the base map comply with U.S. map accuracy standards. However, such accuracy is not guaranteed by Hillsborough County City-County Planning Commission.
 REPRODUCTION: This sheet may not be reproduced in part or full for sale to anyone without the express approval of the Hillsborough County City-County Planning Commission.

REFERENCE INFORMATION



AUTHOR: C. WELSH
 DATE: 9/26/2012
 PROJECT: G:\georef\Projects\Cathy\4\cm\map\Unincorporated_Community_Plans\BalmCommunityPlan_ELU.mxd



For more information about our organization visit website: www.theplanningcommission.org