

# BALM COMMUNITY PLAN ELAPP AREAS

## LEGEND

Balm Community Plan Boundary

Approximate Site Area

Area Approved

Area Acquired

### ELAPP LANDS

Acquisition of Convenience

Acquired

Approved

Other Preservation

Other Public Land

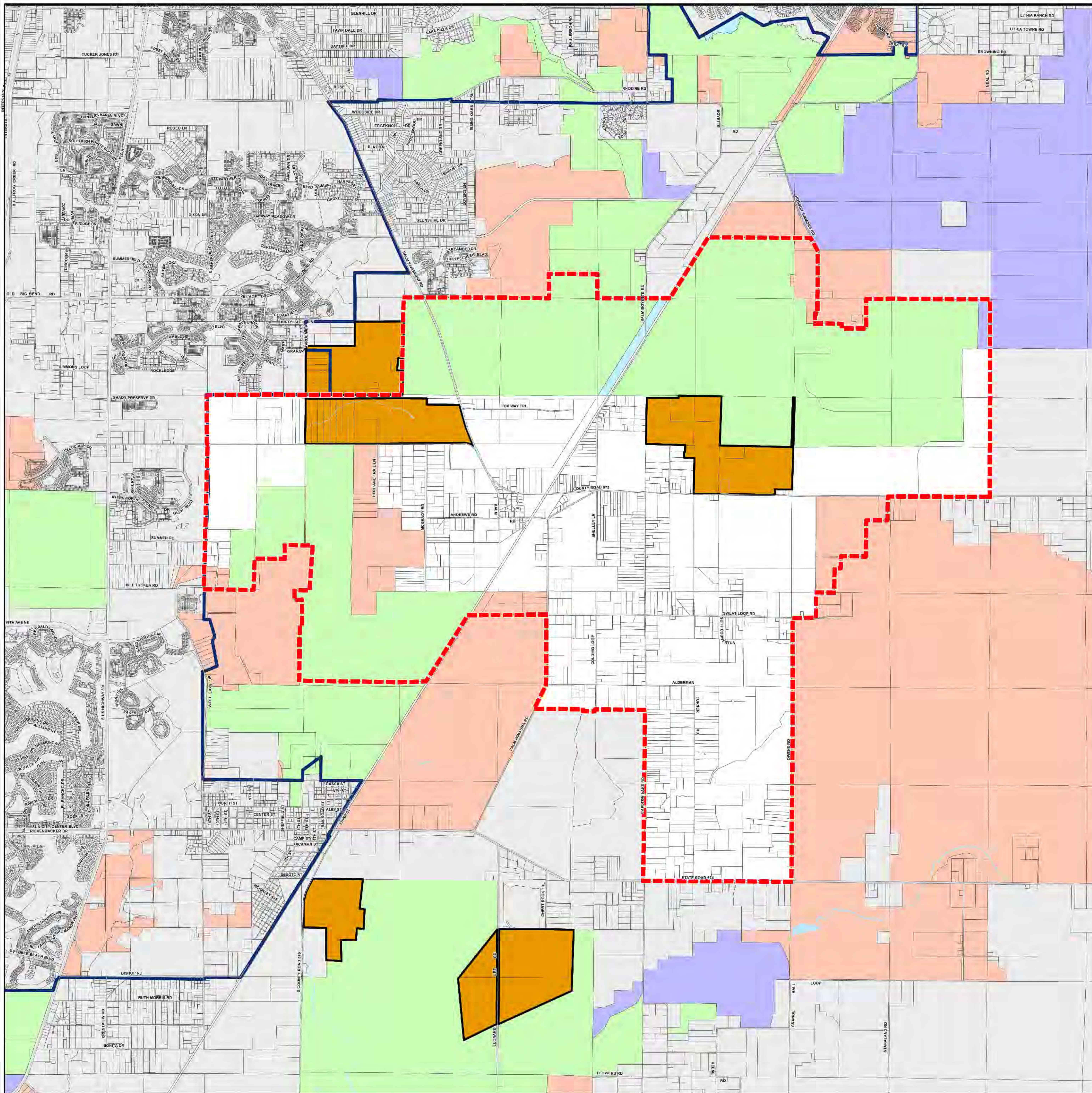
### ROADS AND BOUNDARY LINES

County Boundary

Jurisdiction Boundary

Tampa Service Area

Urban Service Area



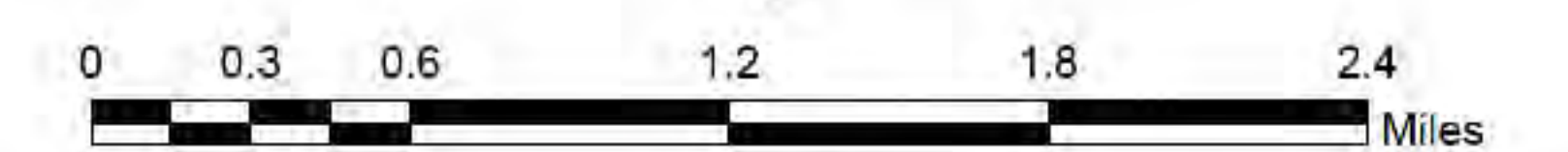
### LOCATOR MAP



### CREDITS

PLAPP: Hillsborough County  
 URBAN SERVICE AREA (USAs): Hillsborough County City/County Planning Commission, Effective to Present  
 PARCEL DATA: Hillsborough County parcel data  
 ACCURACY: It is intended that the accuracy of the base map comply with U.S. map accuracy standards. However, such accuracy is not guaranteed by the Hillsborough County City/County Planning Commission.  
 REPRODUCTION: This sheet may not be reproduced in part or full for sale or any other purpose without specific approval of the Hillsborough County City/County Planning Commission.

### REFERENCE INFORMATION



AUTHOR: C. WELSH  
 DATE: 10/2/2012  
 PROJECT: G:\gisroot\Projects\Cathy\Arcmap\Unincorporated\_Community\_Plans\Balm\_Elapp.mxd



For more information about our organization visit website: [www.theplanningcommission.org](http://www.theplanningcommission.org)